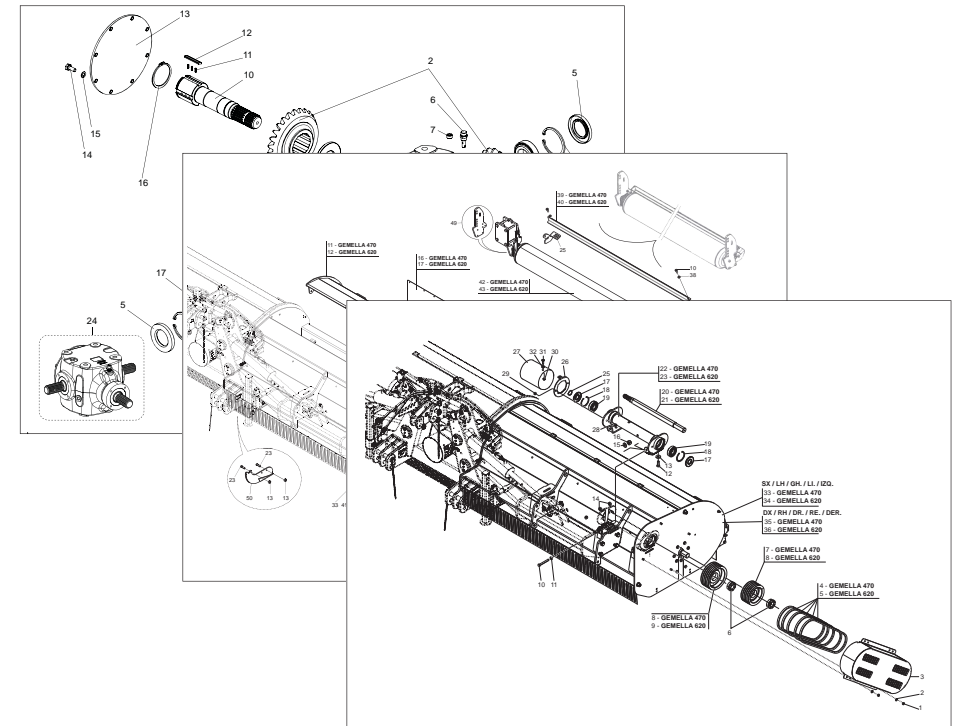


MASCHIO GASPARDO S.p.A.



TORNADO

Cod: F07011450 2016-03

- *) Valido per Paesi UE
- *) Valid for EU member countries
- *) Valable dans les Pays UE
- *) Gilt für EU-Mitgliedsländer
- *) Válido para Países UE

- IT** PARTI DI RICAMBIO
- EN** SPARE PARTS
- DE** ERSATZTEILE
- FR** PIÈCES DÉTACHÉES
- ES** PIEZAS DE REPUESTO

PARTI DI RICAMBIO**SPARE PARTS****ERSATZTEILE****PIECES DÉTACHÉES****RESPUESTOS**

Le ordinazioni delle parti di ricambio vanno fatte presso i nostri concessionari di zona e devono essere sempre corredate dalle seguenti indicazioni:

- **Tipo, modello e numero di matricola dell'attrezzatura.** Tali dati sono stampigliati nell'apposita targhetta di cui è dotata ogni attrezzatura.

- **Numero di codice della parte richiesta** rilevabile dal catalogo ricambi.

- **Descrizione del particolare e quantità richiesta.**

- **Numero della tavola.**

- **Mezzo di trasporto.** Nel caso questa voce non sia specificata, la Ditta Costruttrice, pur dedicando a questo servizio una particolare cura, non risponde di eventuali ritardi di spedizione dovuti a cause di forza maggiore.

Le spese di trasporto si intendono sempre a carico del destinatario. La merce viaggia a rischio e pericolo del committente anche se venduta franco destino.

NOTA: Il termine **(Dx) Destro** o **(Sx) Sinistro** della macchina o di parti di essa, è inteso guardando la macchina dalla parte posteriore. Le eccezioni saranno indicate.

Orders must be transmitted through our area dealers and should always include the following indications:

- **Type, model and serial number of the machine.** *These data are punched on the data plate with which every implement is equipped.*

- **Code number of the required spare part.** *This will be found in the spare parts catalogue.*

- **Description of the part and required quantity.**

- **Table number.**

- **Means of dispatch.** *If this item is not indicated, the Manufacturer, while dedicating particular care to this service, shall not be held responsible for delays in delivery caused by cases of force majeure.*

Transport expenses shall always be at the consignee's charge. The goods travel at the purchaser's risk and peril even when sold ex destination.

NOTE: *The symbols (Dx) right and (Sx) left, concerning the machine or single parts of it, are referred, as in the figure, to a rear view of them. Exceptions will be indicated.*

Die Bestellungen müssen bei unseren Gebietshändlern aufgegeben werden. Bei der Bestellung sind stets die folgenden Angaben zu machen:

- **Typ, Modell und Serien-Nummer des Geräts.** Diese Daten stehen auf dem Typenschild, mit dem jedes Gerät versehen ist.

- **Artikel Nr. der erforderlichen Ersatzteile.** Diese stehen im Ersatzteil-Katalog.

- **Beschreibung des Ersatzteils und die erforderliche Stückzahl.**

- **Tafelnummer.**

- **Versandmittel.** Wenn dieser Punkt nicht spezifiziert wird, haftet die Herstellerfirma nicht für etwaigen Lieferverzug aufgrund höherer Gewalt, auch wenn er diesen Service besonders aufmerksam abwickelt.

Die Frachtkosten gehen dagegen immer zu Lasten des Empfängers. Die Ware reist auf Gefahr und Risiko des Auftraggebers, auch wenn frei Haus Verkauft vereinbart worden ist.

N.B.: Die Merkzeichen **(Dx) rechts** und **(Sx) links** betreffen eine rückwärtige Aussicht der Maschine oder Teile von ihr (siehe Bild). Ausnahmen werden gezeigt.

Les ordres doivent être effectués auprès de nos concessionaires de zone en précisant les indications suivantes:

- **Type, modèle et numéro de série de la machine.** *Ces données sont gravées sur la plaque d'identification de chaque outil.*

- **Numéro de code de la pièce détachée** *indiqué sur le catalogue des pièces détachées.*

- **Description de la pièce et quantité requise.**

- **Numéro de plan.**

- **Moyen d'expédition.** *Si cette rubrique n'est pas indiquée, le Constructeur, bien que soucieux de ce service, ne répond pas des retards d'expédition pour des causes de force majeure.*

Les frais de transport sont toujours à la charge du destinataire. La marchandise voyage aux risques et périls de l'acheteur même si vendue franco de port.

N.B.: *Les références (Dx) droit et (Sx) gauche de la machine ou des parties de la même, est entendue, comme de la figure, en regardant la machine de derriere dans le sens de marche.*

Los pedidos han de efectuarse en nuestros concesionarios de zona y deben incluir siempre las siguientes indicaciones:

- **Tipo, modelo y número de matrícula del equipo.** Dichos datos están impresos en la relativa placa presente en el equipo.

- **Número de código de la parte requerida** presente en el catálogo respuestas.

- **Descripción de la pieza y cantidad requerida.**

- **Numero de ilustración.**

- **Medio de transporte.** En caso que este ítem no esté especificado, el Fabricante, aún prestando la debidas consideraciones para este aspecto, no responde por eventuales retardos de env'o debidos a causas de fuerza mayor.

Los gastos de transporte se consideraran siempre a cargo del destinatario. La mercadería viaja bajo riesgo y peligro del comprador, incluso cuando se vende franco destino.

N.B.: La referencia **(Dx) derecha** o **(Sx) izquierda** de la máquina o de sus componentes, se entiende, como en la figura, mirando la máquina por la parte trasera. Se indicarán las excepciones.

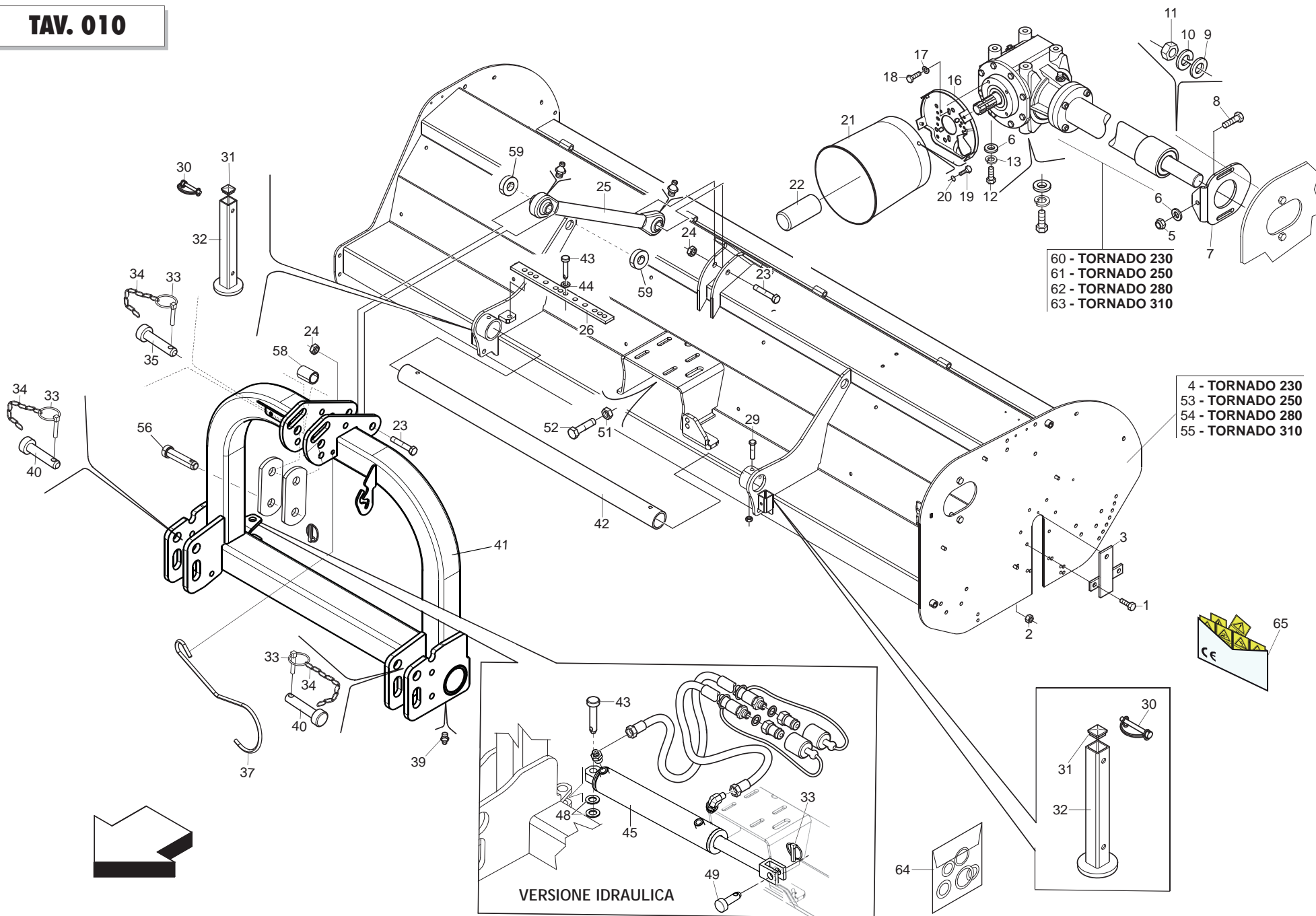
INDICE

<i>N° Tavola</i>	<i>Descrizione</i>	<i>Pagina</i>
TAV. 010	ASSIEME GENERALE	6
TAV. 020	MOLTIPLICATORE	8
TAV. 030	TELAIO	10
TAV. 040	RULLO	12
TAV. 050	ROTORE	14
TAV. 060	SLITTE, LAM. ANTIUSURA e RUOTE STERZ. POST.	16
TAV. 070	RUOTE DI TRASPORTO	18
TAV. 080	KIT SUPPORTI PER TRASPORTO STRADALE.....	20
TAV. 090	KIT TABELLE STRADALI G99600006.....	22
TAV. 100	KIT TABELLE STRADALI G99600017.....	24
TAV. 110	KIT TABELLE STRADALI G99600018.....	26
TAV. 120	TABELLA LARGHEZZA ECCEZIONALE	28
TAV. 130	CARDANO	30
TAV. 130	CARDANO (OPTIONAL)	32

INDEX

<i>N° Table</i>	<i>Description</i>	<i>Page</i>
TAV. 010	GENERAL ASSEMBLY.....	6
TAV. 020	GEARBOX.....	8
TAV. 030	FRAME	10
TAV. 040	ROLLER.....	12
TAV. 050	ROTOR.....	14
TAV. 060	SKIDS, DOUBLE SKIN and REAR STEERING WHEELS	16
TAV. 070	TRANSPORT WHEELS.....	18
TAV. 080	ROAD TRANSPORT SUPPORTS KIT	20
TAV. 090	ROAD TRANSPORT KIT G99600006.....	22
TAV. 100	ROAD TRANSPORT KIT G99600017	24
TAV. 110	ROAD TRANSPORT KIT G99600018	26
TAV. 120	EXCEPTIONAL WIDTH ROAD PANEL	28
TAV. 130	CARDAN SHAFT.....	30
TAV. 130	OPTIONAL CARDAN SHAFT	32

TAV. 010

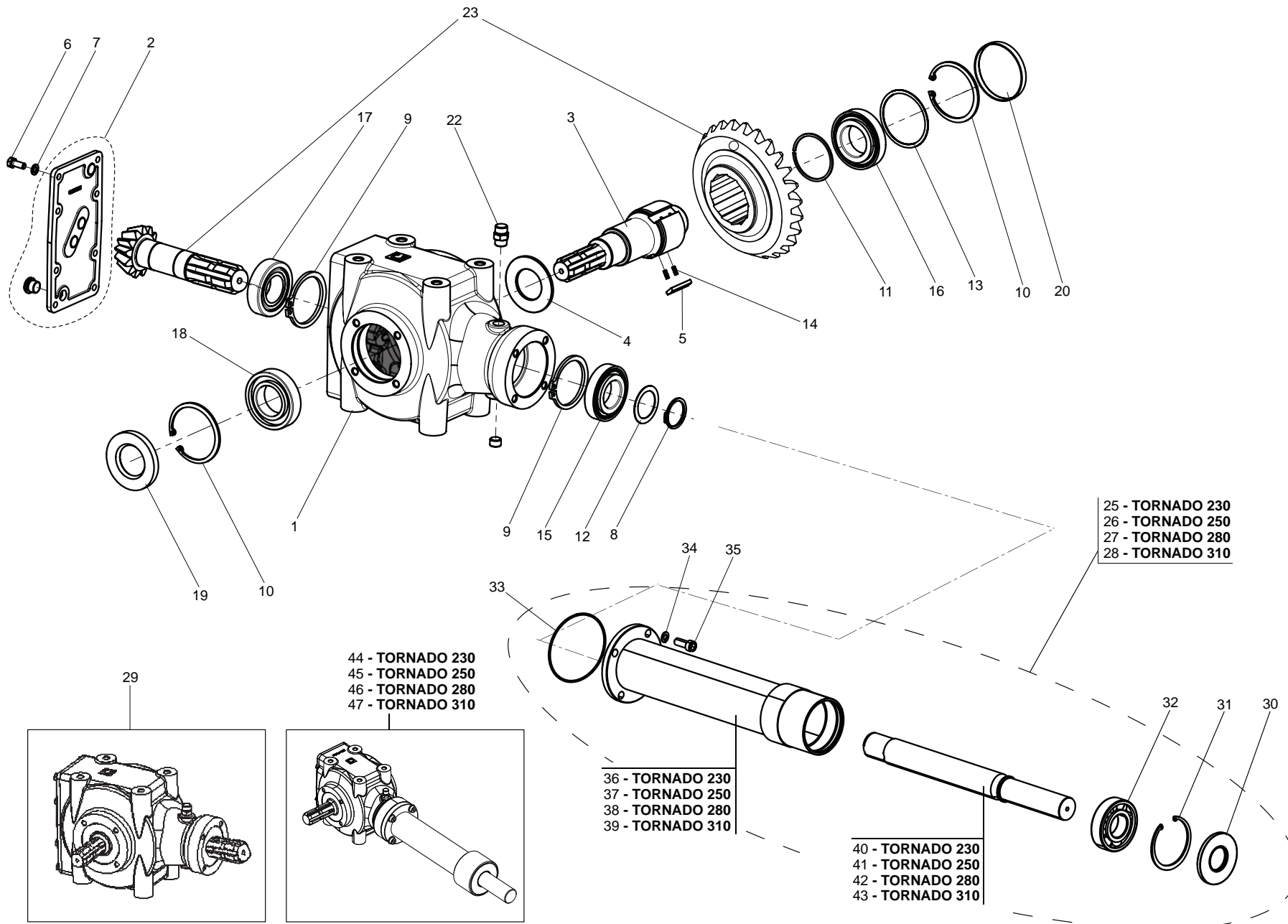


**ASSIEME GENERALE
GENERAL ASSEMBLY**

TAV. 010

Pos.	Cod.	Descrizione	Description	Benennung	Description	Descrpcion
1	F01010313	VITE M14X1,5X30 U5740 8.8ZN	SCR. M14X1,5X30 U5740 8.8ZN	VIS M 14X1,5X30	SCHRAUBE M 14X1,5X30	TORNILLO M 14X1,5X30
2	F01220059	DADO M14X1,5 D980 8ZN >	NUT M14X1,5 D980 8ZN	ECROU M14X 1,5 D980 8 ZN	MUTTER M14X 1,5 D980 8 ZN	TUERCA M14X 1,5 D980 8 ZN
3	M31400558	COMP.CHIUSURA ROTORE TORNADO	PLATE	PLAQUETTE	PLATTE	PLAQUITA
4	M31423535	TELAIO TORNADO 230	FRAME TORNADO 230			
5	F01230073	DADO M14X2 D982 8ZN	SELF LOCK NUT M14X2 D982 8ZN	ECROU AUTOBL. M14X2 D982 8ZN	SELBSTSP.MUTT. M14X2 D982 8ZN	TUERCA AUTOBL. M14X2 D982 8ZN
6	F01410088	ROS.M14 15X 28X2,5 U6592 ZN >	WAS.M14 15X 28X2,5 U6592 ZB	RON.M14 15X 28X2,5 U6592 ZB	SCH.M14 15X 28X2,5 U6592 ZB	ARA.M14 15X 28X2,5 U6592 ZB
7	M31400572	PIATTO REGISTRO TENDICINGHIA	PLATE STRETCHER			
8	F01020550	VITE M14X2X120 U5739 8.8ZN	SCR. M14X2X120 U5739 8.8ZN	VIS M14X2X120	SCHRAUBE M14X2X120	TORNILLO M14X2X120
9	F01410076	ROS.M12 13X 24X2,5 U6592 ZN >	WASHER 12 13X 24X2,5 U6592 ZN	RONDEL. M12 13X24X2,5 U6592 ZN	SCHIEBE M12 13X24X2,5 U6592 ZN	ARANDELA M12 13 X24X2,5 ZN
10	F01480123	ROS.G 12,5X22,9X 4 FLZNNC-240H	WASHER M12 ZGP EXTRA P.	RONDELLE M12 ZGP EXTRA P.	UNTERLEGSCHIEBE M12 ZGP EXTRA	ARANDELA M12 ZGP EXTRA P.
11	F01220047	DADO M12X1,25 D980 8ZN	NUT M12X1,25 D980 8ZN	ECROU M12X1,25 D980 8 ZN	MUTTER M12X1,25 D980 8 ZN	TUERCA M12X1,25 D980 8 ZN
12	F01020544	VITE M14X2X40 U5739 8.8ZN	SCR. M14X2X40 U5739 8.8ZN	VIS M14X2X40 U5739 8.8ZN	SCHR.M14X2X40 U5739 8.8ZN	TOR.M14X2X40 U5739 8.8ZN
13	F01480134	ROS.G 15X26,5X4,5 FLZNNC-240H	GROWER 15X26,5X4,5 EX.C70 ZN	RONDELLE GROWER 15X26,5X4,5	SCHIEBE GROWER 15X26,5X4,5	ARANDELA GROWER 15X26,5X4,5
16	M37100106	ATTACCO PROTEZIONE	PROTECTION SUPPORT	SUPPORT PROTECTION CARDAN	GELENKWELLENSCHUTZ HALTER	SOPORTE PROTECCION CARDANICO
17	F01410064	ROS.M10 10,5X 20X 2 U6592 ZN >	WASHER M10 10,5X20X2 U6592 ZN	RONDEL. M10 10,5X20X2 U6592 ZN	SCHIEBE M10 10,5X20X2 U6592 ZN	ARANDEL.M10 10,5X20X2 U6592 ZN
18	F01020470	VITE M10X1,5X20 U5739 8.8ZN	SCR. M10X1,5X20 U5739 8.8ZN	VIS M10X1,5X20 U5739 8.8 ZN	SCHRAUBE M10X1,5X20 U5739 ZN	TORNILLO M10X1,5X20 U5739 8.8ZN
19	F01020403	VITE M6X1X16 U5739 8.8ZN	SCR. M6X1X16 U5739 8.8ZN	VIS M6X1X16 U5739 8.8 ZN	SCHRAUBE M6X1X16 U5739 8.8 ZN	TORNILLO M6X1X16 U5739 8.8 ZN
20	F01410037	ROS.M6 6,4X12,5X1,6 U6592 ZN>	WASHER M6 6,4X12,5X1,6 U6592ZN	RONDEL.M6 6,4X12,5X1,6 U6592ZN	SCHIEB.M6 6,4X12,5X1,6 U6592ZN	ARAND.M6 6,4X12,5X1,6 U6592 ZN
21	M10100168	PROTEZIONE CARDANO	CARDAN PROTECTION	PROTECTION CARDAN	GELENKWELLENSCHUTZ	PROTECCION CARDANICO
22	G19002131	PROTEZIONE P.D.P.	PDP GUARD			
23	F01010184	VITE M20X1,5X110 U5738 8.8ZN	SCR. M20X1,5X110 U5738 8.8ZN	VIS M 20X1,5X110	SCHRAUBE M 20X1,5X110	TORNILLO M 20X1,5X11
24	F01220093	DADO M20X1,5 D980 8ZN	NUT M20X1,5 D980 8ZN	ECROU AUTOBL. M20X1,5 D980 8ZN	SELB.MUTTER M20X1,5 D980 8ZN	TUERCA AUTOBL.M20X1,5 D980 8ZN
25	M24400544	TIRANTE 3°PUNTO	MECH. OFFSET BAR	BARRE DE DEPLACEMENT MECAN.	MECH.VERSCHIEBUNG STANGE	TORN.M12X1,25X35 U5740 8.8 ZN
26	M34400516	ASTA SPOST.MECCANICO TIGRE	SCR. M12X1,25X35 U5740 8.8ZN	VIS M12X1,25X35 U5740 8.8 ZN	SCHR.M12X1,25X35 U5740 8.8 ZN	CLAVIJA D.8X 70 ZN
29	F01010288	VITE M12X1,25X35 U5740 8.8ZN	SCR. M12X1,25X35 U5740 8.8ZN	VIS M12X1,25X35 U5740 8.8 ZN	SCHR.M12X1,25X35 U5740 8.8 ZN	SOPORTE PROTECCION CARDANICO
30	F02200562	SPINA SICUR.D. 8X70 ZN >	SNAP PIN D.8X 70 ZN	SNAP PIN D.8X 70 ZN	SCHERSTIFT D.8X 70 ZN	TAPONCLAUSURA
31	F05100025	TAPPO AD ALETTE 35X35 PLT NERO	PLUG	BOUCHON FERMETURE	VERSCHLUSSPFROPFEN	SOPORTE L=424,3
32	M56400922	COMP. PIEDINO L=424,3	SUPPORT ASSEMBLY L=424,3	SUPPORT L=424,3	STANDER L=424,3	CLAVIJA DE MUELLE D.11 H58 ZN
33	F02200529	SPINA SCATTO D.11 H58 ZN >	SNAP PIN D.11 H58 ZN	FICHE A DETENTE D.11 H58 ZN	EINRASTSTIFT D.11 H58 ZN	CADENA L=476
34	M58100930	CATENELLA L=476	ASSEMBLY CHAIN DMP L=476	CHAINE L=476	KETTE L=476	PERNO D25 L122 C43 ZN
35	F20100133	PERNO D25 L122 C43 TEST.D60 ZN	PIN D25 L122 C43 ZN	BOULON D25 L122 C43 ZN	BOLZEN D25 L122 C43 ZN	PERNO D25 L122 C43 ZN
37	F20120400	GANCIO SOSTEGNO CARDANO	SHAFT HOOK SUPPORT	SUPPORT CARDAN	SUPPORT CARDAN	SOPORTE CARDAN
39	F01100048	ING.M 8X1,25 7663A 9SMNPB28 Z>	GREASE NIPPLE M8X1,25 U7663A	GRAISSEUR A BILLES M8X1,25	SCHMIERBUECHSE M8X1,25 7663A	ENGRAS. DE ESFERAS M8 X 1,25 A
40	F20100074	PERNO D28 L109 C43 SPINA 3°P.>	PIN FOR BAR LINKAGE	GOUJON ATTELAGE BARRE	VERB.BOLZEN SCHUTZHOLM	PERNO ATAQUE BARRA
41	M31400577	CASTELLO T.P.TORNADO-TIGRE	HEADFRAME T.P.TORNADO-TIGRE			
42	M24415533	ASTA SCOR.CHIARA 160 L=1467 ZN	GUIDE ROD CHIARA 160 L=1467 ZN			
43	F20100035	PERNO D19 L90 C43 TEST.D35 ZN	BOLT D19 L86 C43 ZN	BOULON D19 L86 C43	BOLZEN D19 L86 C43	PERNO D19 L86 C43
44	F01410124	ROS.M20 21X 37X 3 U6592 ZN >	WASHER M20 21X 37X 3 U6592 ZN	RONDEL.M20 21X 37X 3 U6592 ZN	MUTTER M20 21X 37X 3 U6592 ZN	ARANDELA M20 21X37X3 U6592 ZN
45	M31430946	MARTINETTO ID.A=60 C=300 L=830	JACK ID.A=60 C=300 L=830			
48	F01410124	ROS.M20 21X 37X 3 U6592 ZN >	WASHER M20 21X 37X 3 U6592 ZN	RONDEL.M20 21X 37X 3 U6592 ZN	MUTTER M20 21X 37X 3 U6592 ZN	ARANDELA M20 21X37X3 U6592 ZN
49	F20100034	PERNO D19 L40 C43 TEST.D35 ZN	BOLT D=19 L=40	GOUJON D=19 L=40	STIFT D=19 L=40	PERNO D=19 L=40
51	F01200419	DADO M12X1,25 U5589 CL8 BR >	NUT M12X1,25 U5589 6SBR	ECROU M12X1,25	MUTTER M12X1,25	DADO M12X1,25
52	F01010298	VITE M12X1,25X80 U5740 8.8ZN	SCR. M12X1,25X80 U5740 8.8ZN	VIS M12X1,25X80 U5740 8.8 ZN	SCHR.M12X1,25X 80 U5740 8.8 ZN	TORN.M12X1,25X 80 U5740 8.8ZN
53	M31425535	TELAIO TORNADO 250	FRAME TORNADO 250			
54	M31428535	TELAIO TORNADO 280	FRAME TORNADO 280			
55	M31431535	TELAIO TORNADO 310	FRAME TORNADO 310			
56	F20100063	PERNO D25 L91 C43 TEST.D35 ZN>	PIN D25 L91 C43 ZN	BOULON D25 L91 C43 ZN	BOLZEN D25 L91 C43 ZN	PERNO D25 L91 C43 ZN
57	T30005107	PIATTO ATTACCO 3° PUNTO CR	REAR SUPPORT 3RD POINT CR	BARRE CR	HINTERSTANGE 3. PUNKT CR	ASTA POSTERIOR 3 PUNTO CR
58	M68100932	BUSSOLA	BUSHING	BOUSSOLE	BUECHSE	BRUJULA
59	M19400536	DISTANZ.D=50 D=22,5 L=14 ZN	SPACER	ENTRETOISE	DISTANZSTUECK	DISTANCIADOR
60	M31423201	MOLTIPLIC.BOND.540 L= 990	MULTIPLICATOR BOND.540 L= 990			
61	M31425201	MOLTIPLIC.BOND.540 L= 1115	MULTIPLICATOR BOND.540 L= 1115			
62	M31428201	MOLTIPLIC.BOND.540 L= 1240	MULTIPLICATOR BOND.540 L= 1240			
63	M31431201	MOLTIPLIC.BOND.540 L= 1560	MULTIPLIER.BOND.540 L=1560			
64	F03100266	SERIE GUARN.PER CIL. M31430946	GASKET SET M31430946			CAJA CAMBIO BOND.540 L= 1560
65	F20030241	KIT.ET.CE TRINCIA	KIT CE LABELS MULCHERS			

TAV. 020

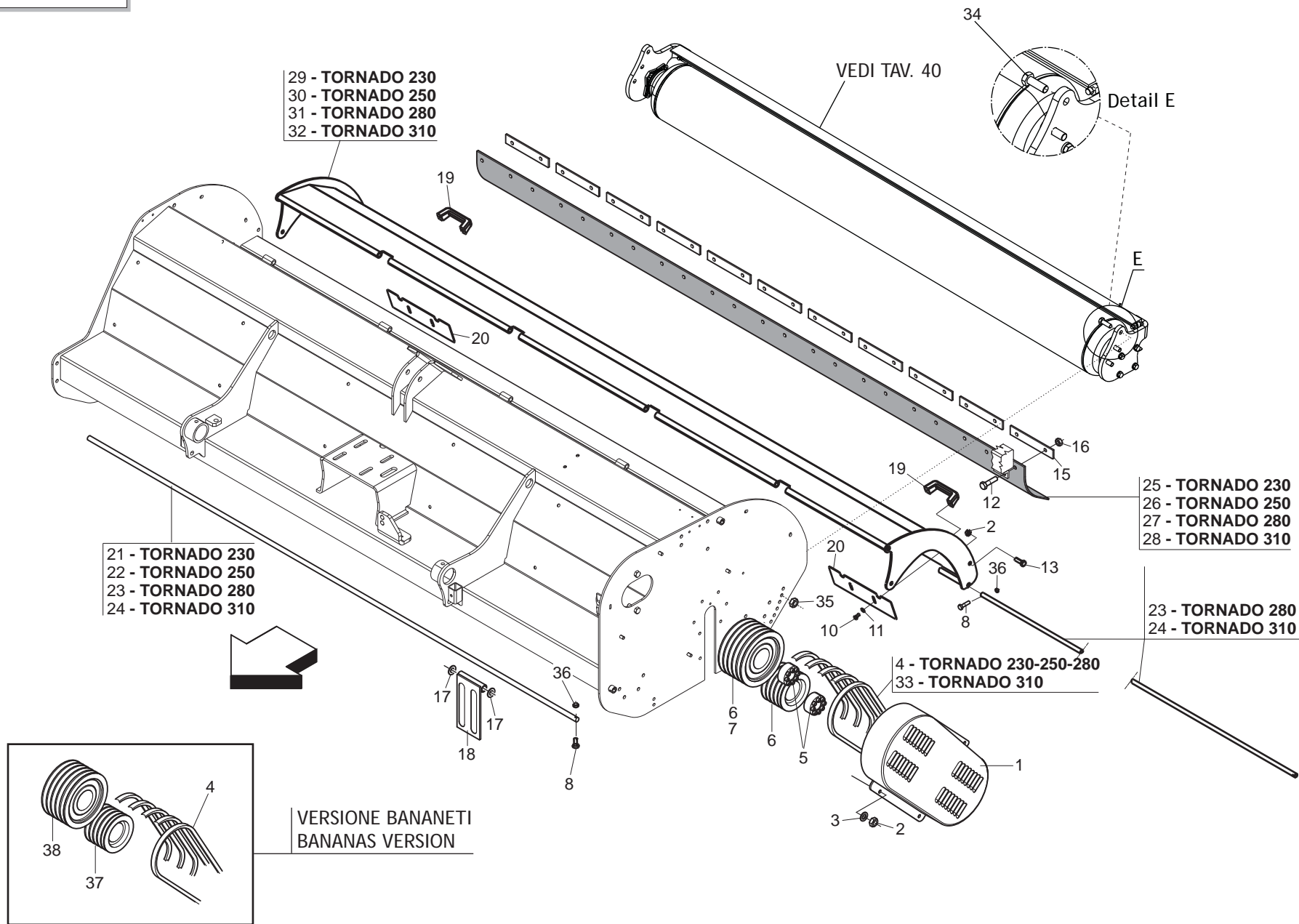


**MOLTIPLICATORE
GEARBOX**

TAV. 020

Pos.	Cod.	Descrizione	Description	Benennung	Description	Descrpcion
1	M30500244	CORPO SCAT.2071 G25 RL Z	GEAR-BOX	BOITE DE VITESSES	GETRIEBEGEHAUSE	CAJA CAMBIO
2	M50400908	KIT COPERCHIO POST.	COVER	COUVERCLE	DECKEL	TAPA
3	M30500181	ALBERO XY 2071 R-RL >	SHAFT 2071 R-RL			
4	M50400902	DISTANZIALE	SPACER	ENTRETOISE	DISTANZSTUECK	DISTANCIADOR
5	M50400903	PIASTRINA	PLATE			
6	F01020436	VITE M8X1,25X20 U5739 8.8ZN >	SCR. M8X1,25X20 U5739 8.8ZN	VIS M8X1,25X 20 U5739 8.8 ZN	SCHRAUBE M8X1,25X20U5739 8.8ZN	TORN. M8X1,25X20 U5739 8.8 ZN
7	F01480099	ROS.G 8,4X14,4X2,7 FLZNNC-240H	GROWER WASHER D.8	RONDELLE GROWER D.8	SCHIEBE GROWER D.8	ARANDELA GROWER D.8
8	F02050147	ANELLO E. DE 35X 2,5 U7436 C70	ELASTIC RING 35X2,5 U7436 C70	BAGUE ELASTIQUE 35X 2,5 U7436	RING 35X 2,5 U7436 C70	ANILLO 35X 2,5 U7436 C70
9	F02050403	ANELLO E. DI 72X 2,5 U7437 C7>	SEEGER RING E.72X2,5 U7437 C70	SEEGER E. 72X 2,5 U7437 C70	SEEGERING E. 72X 2,5 U7437 C70	ANILLO E. 72X 2,5 U7437 C70
10	F02050436	ANELLO E. DI 85X 3 U7437 C70	SEEGER RING E.85X 3 U7437 C70			
11	M30500180	ANELLO EL. E.67X2,5 >	SNAP RING E.67X2,5			
12	M30500105	ANELLI SP.35,2X 44,7	REINFORCEMENTS	RENFORTS	VERSTAERKERUNGEN	RENFUERZOS
13	M58100127	340I08500 KIT SPES.BONDIOLI >	REINFORCEMENTS FOR 58100101	RENFORTS POUR 58100101	VERSTAERKERUNGEN II X 58100101	RENFUERZOS PARA 58100101
14	M50400905	MOLLA PER RUOTA LIBERA	SPRING FOR FREE WHEEL			
15	F04010175	CUSC.D35 D72 B17 6207 >	BEARING D35 D72 B17 6207	ROULEMENT 6207	LAGER 6207	COJINETE 6207
16	F04010185	CUSC.D45 D85 B19 6209	BEARING D45 D85 B19 6209	ROULEMENT D45 D85 6209	LAGER D45 D85 6209	COJINETE D45 D85 6209
17	F04050070	CUSC.D35 D72 T24,25 32207 >	BEARING D35 D72 T24,25 32207	ROULEMENT 32207	LAGER 32207	COJINETE 32207
18	F04050018	CUSC.D45 D85 T20,75 30209	BEARING D45 D85 T20,75 30209	ROULEMENT D45 D85 T20,75 30209	LAGER D45 D85 T20,75 30209	COJINETE D45 D85 T20,75 30209
19	F03010290	ANELLO T.AS 45X 85X10 D3760NBR	OIL SEAL 45X85X10	PARE-HUILE 45X85X10	OELABDICHTUNG 45X85X10	PARA-ACEITE 45X85X10
20	M50400906	TAPPO CHIUSURA 85X10	CLOSURE TAP 85X10			
22	F03150718	TAPPO 3/8" GAS CON SFIATO	GAS BREATHER PLUG 3/8"	BOUCHON D'HUILE SOUPIRAL	OELENTLUEFTERSTOPFEN	TAPON ACEITE
23	M30500243	COPPIA CONICA R=3.08 X2071 RL	BEVEL GEAR PAIR	COUPLE CONIQUE	KEGELRITZELSATZ	PAR CONICO
25	M31423102	PROLUNGA TRASMISS. L= 788	TRANS. SHAFT EXTENSION	RALLONGE ARBRE DE TRANSMISS.	VERLZNGERUNG ANTRIEBSWELLE	EXTENSION ARBOL TRANS.
26	M31425102	PROLUNGA TRASMISS. L= 913	TRANS. SHAFT EXTENSION	RALLONGE ARBRE DE TRANSMISS.	VERLZNGERUNG ANTRIEBSWELLE	EXTENSION ARBOL TRANS.
27	M31428102	PROLUNGA TRASMISS. L= 1038	TRANS. SHAFT EXTENSION	RALLONGE ARBRE DE TRANSMISS.	VERLZNGERUNG ANTRIEBSWELLE	EXTENSION ARBOL TRANS.
28	M31431102	PROLUNGA TRASMISS. L= 1358	TRANS. SHAFT EXTENSION	RALLONGE ARBRE DE TRANSMISS.	VERLZNGERUNG ANTRIEBSWELLE	EXTENSION ARBOL TRANS.
29	M31400101	SCATOLA MOLT.BONDIOLI 540 RPM	COMPLETE GEARBOX	BOITE DE VITESSE	WECHSELGETRIEBE	CAJA CAMBIO COMPLETA
30	F03010294	ANELLO T.AS 45X100X10 D3760NBR	RING T.AS 45X100X10 D3760NBR	BAGUE T.AS 45X100X10 D3760NBR	SCHUTZRING 45X100X10 D3760NBR	PARA-ACEITE 45X100X10
31	F02050471	ANELLO E. DI100X 3 U7437 C70>	SEEGER RING D.100	BAGUE SEEGER D.100	SEEGERRING D.100	ANILLO SEEGER D.100
32	F04010222	CUSC.D45 D100 B25 6309	BEARING D45 D100 B25 6309	ROULEMENT 6309	LAGER 6309	COJINETE 6309
33	M30500161	ANEL. OR. 72.69X2.62	GASKET OR 72.69X2.62	BAGUE OR 72.69X2.62	RING OR 72.69X2.62	ANILLO OR 72.69X2.62
34	F01410066	ROS.M10 10,5X 16X1 SCHNORR S10	WASHER M10 10,5X16X1	RONDELL.M10 10,5X16X1	SCHIEBE M10 10,5X16X1	ARAND. M10 10,5X16X1
35	F01040121	VITE M10X1,5X35 U5931 8.8ZN >	SCREW M10X1,5X35 U5931 8.8 ZN	VIS M10X1,5X35 U5931 8.8 ZN	SCHRAUB.M10X1,5X35 U5931 8.8ZN	TORN. M10X1,5X35 U5931 8.8ZN
36	M30500247	COMP. TUBO L788	TUBE L788			
37	M30500245	COMP. TUBO 938 1116	TUBE 938 1116			
38	M30500249	COMP.TUBO L1038	TUBE L1038			
39	M30500251	COMP.TUBO L1358	TUBE L1358			
40	M30500248	ALBERO 938 L883	TRANSMISSION SHAFT	ARBRE DE TRANSMISSION	ANTRIEBSWELLE	EJE DE TRASMISION
41	M30500246	COMP.ALBERO 938 PROL. 1008	TRANSMISSION SHAFT	ARBRE DE TRANSMISSION	ANTRIEBSWELLE	EJE DE TRASMISION
42	M30500250	ALBERO 938 L1133	TRANSMISSION SHAFT	ARBRE DE TRANSMISSION	ANTRIEBSWELLE	EJE DE TRASMISION
43	M30500252	ALBERO 938 L1453	TRANSMISSION SHAFT	ARBRE DE TRANSMISSION	ANTRIEBSWELLE	EJE DE TRASMISION
44	M31423201	MOLTIPLIC.BOND.540 L= 990	MULTIPLICATOR BOND.540 L= 990			
45	M31425201	MOLTIPLIC.BOND.540 L= 1115	MULTIPLICATOR BOND.540 L= 1115			
46	M31428201	MOLTIPLIC.BOND.540 L= 1240	MULTIPLICATOR BOND.540 L= 1240			
47	M31431201	MOLTIPLIC.BOND.540 L= 1560	MULTIPLIER.BOND.540 L=1560			CAJA CAMBIO BOND.540 L= 1560

TAV. 030

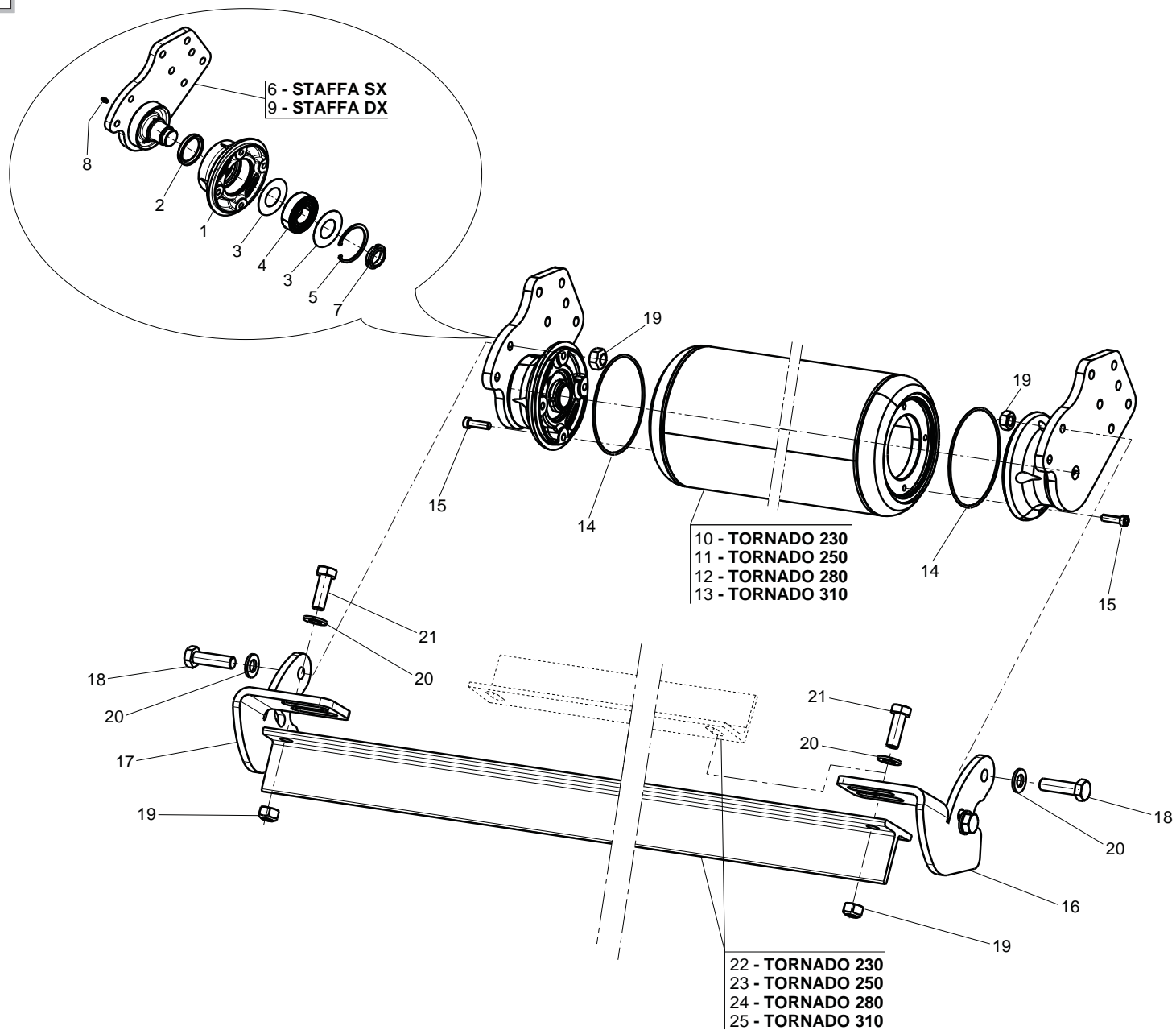


**TELAIO
FRAME**

TAV. 030

Pos.	Cod.	Descrizione	Description	Benennung	Description	Description
1	M63400305	COMP.CARTER LEOPARD ST	CARTER LEOPARD ST			
2	F01220047	DADO M12X1,25 D980 8ZN	NUT M12X1,25 D980 8ZN	ECROU M12X1,25 D980 8 ZN	MUTTER M12X1,25 D980 8 ZN	TUERCA M12X1,25 D980 8 ZN
3	F01410076	ROS.M12 13X 24X2,5 U6592 ZN >	WASHER 12 13X 24X2,5 U6592 ZN	RONDEL. M12 13X24X2,5 U6592 ZN	SCHIEBE M12 13X24X2,5 U6592 ZN	ARANDELA M12 13 X24X2,5 ZN
4	F06010067	CINGHIA XPB L=1800	BELT L=1800	COURROIE L=1800	RIEMEN L=1800	CORREA L=1800
5	F06060039	CALETTATORE AUTOCENTR.45X80	SELF CENTR.CLAMPEL.45X80	EMBOITEMENT AUTOBLOCANT 45X80		
6	T40005126	PULEGGIA D.224 5V	PULLEY	POULIE	SCHEIBE	POLEA
7	T40005120	PULEGGIA D=250 5V	PULLEY TORNADO 230-250-280	POULIE TORNADO 230-250-280	SCHEIBE TORNADO 230-250-280	POLEA TORNADO 230-250-280
8	F01040066	VITE M6X1X35 U5931 8.8ZN	SCREW M6X1X35 U5931 8.8ZN	VIS M6X1X35 U5931 8.8ZN	SCHRAUBE M6X1X35 U5931 8.8ZN	TORNILLO M6X1X35 U5931 8.8ZN
10	F01020432	VITE M8X1,25X16 U5739 8.8ZN >	SCR. M8X1,25X16 U5739 8.8ZN	VIS M8 X1,25X16 U5739 8.8 ZN	SCHRAUBE M8X1,25X16U5739 8.8ZN	TORNILLO M8X1,25X16U5739 8.8ZN
11	F01410051	ROS.M8 8,4X 17X1,6 U6592 ZN >	WASHER M8 8,4X17X1,6 U6592 ZN	RONDELLE M8 8,4X17X1,6 U6592ZN	SCHIEBE M8 8,4X17X1,6 U6592 ZN	ARANDELA M8 8,4X17X1,6 U6592ZN
12	F01020436	VITE M8X1,25X20 U5739 8.8ZN >	SCR. M8X1,25X20 U5739 8.8ZN	VIS M8X1,25X 20 U5739 8.8 ZN	SCHRAUBE M8X1,25X20U5739 8.8ZN	TORN. M8X1,25X20 U5739 8.8 ZN
13	F01010288	VITE M12X1,25X35 U5740 8.8ZN	SCR. M12X1,25X35 U5740 8.8ZN	VIS M12X1,25X35 U5740 8.8 ZN	SCHR.M12X1,25X35 U5740 8.8 ZN	TORN.M12X1,25X35 U5740 8.8 ZN
15	M07400953	PIATTO PER ATTACCO GOMMA	PLATE	PLAT	PLATTE	PLATO
16	F01220022	DADO M8X1,25 D980 8ZN	NUT M8X1,25 D980 8ZN	ECROU M8X 1,25 D980 8 ZN	MUTTER M8X 1,25 D980 8 ZN	TUERCA M8X 1,25 D980 8 ZN
17	F01410100	ROS.M16 17X 30X 3 U6592 ZN >	WASHER M16 17X30X3 U6592 ZN	RONDELLE M16 17X30X3 U6592 ZN	SCHRAUBE M16 17X 30X3 U6592 ZN	ARANDELA M16 17X30X 3 U6592 ZN
18	M31400550	BANDELLA PROTEZIONE L=93 ZN 0>	PROTECTION BAR	BANDE PROTECTION	SCHUTZWORNE	ALETA PROTECCION
19	F05150112	MANIGLIA INTERAS. 117 FORO 8MM	HANDLE	POIGNEE	HANDGRIFF	MANILLA
20	M32400806	PROTEZIONE POSTERIORE COFANO	REAR CARTER PROTECTION			
21	T40235032	ASTA PER COPERCHIO 230 ZN	ROD 230 ZN	BARRE SUPPORT 230 ZN	STANGE 230 ZN	ASTA SOPORTE 230 ZN
22	T40255032	ASTA PER COPERCHIO 250 ZN	ROD 250 ZN	BARRE SUPPORT 250 ZN	STANGE 250 ZN	ASTA SOPORTE 250 ZN
23	T40285032	ASTA PER COPERCHIO 280 Z.P.G.	ROD 280 ZN	BARRE SUPPORT 280 ZN	STANGE 280 ZN	ASTA SOPORTE 280 ZN
24	T40315032	ASTA PER COPERCHIO MS310	ROD MS310	TIGE MS310	STANGE MS310	VARILLA MS310
25	M31423560	PROTEZ. POST.PVC TORNADO 230	REAR PROTECTION 230	PROTECTION ARRIERE 230	HINTERER SCHUTZ 230	PROTECCION TRASERA 230
26	M31425560	PROTEZ. POST.PVC TORNADO 250	REAR PROTECTION 250	PROTECTION ARRIERE 250	HINTERER SCHUTZ 250	PROTECCION TRASERA 250
27	M31428560	PROTEZ. POST.PVC TORNADO 280	REAR PROTECTION 280	PROTECTION ARRIERE 280	HINTERER SCHUTZ 280	PROTECCION TRASERA 280
28	M31431560	PROTEZ. POST.PVC TORNADO 310	REAR PROTECTION 310	PROTECTION ARRIERE 310	HINTERER SCHUTZ 310	PROTECCION TRASERA 310
29	M32423702	COFANO POST.GEMELLA 230	REAR BONNET GEMELLA 230			
30	M32425702	COFANO POST.TORNADO 250	BACK COVER TORNADO250			
31	M32428702	COFANO POST.TORNADO 280	BACK COVER TORNADO 280			
32	M32431702	COFANO POST.GEMELLA 310	REAR BONNET GEMELLA 310			
33	F06010069	CINGHIA XPB L=1750	BELT XPB L=1750	COURROIE L=1750	RIEMEN L=1750	CORREA L=1750
34	F01010318	VITE M14X1,5X40 U5740 8.8ZN	SCR. M14X1,5X40 U5740 8.8ZN	VIS M 14X1,5X40	SCHRAUBE M 14X1,5X40	TORNILLO M 14X1,5X40
35	F01220059	DADO M14X1,5 D980 8ZN >	NUT M14X1,5 D980 8ZN	ECROU M14X 1,5 D980 8 ZN	MUTTER M14X 1,5 D980 8 ZN	TUERCA M14X 1,5 D980 8 ZN
36	F01220011	DADO M6X1 D980 8ZN >	NUT M6X1 D980 8ZN	ECROU M6X1 D980 8 ZN	MUTTER M6X1 D980 8 ZN	TUERCA M6X1 D980 8 ZN
37	T40005128	PULEGGIA D=200 5V	PULLEY	POULIE	SCHEIBE	ROLDANA
38	M63400302	PULEGGIA D=280 GOLE 5	PULLEY D=280 GOLE 5			

TAV. 040



**RULLO
ROLLER**

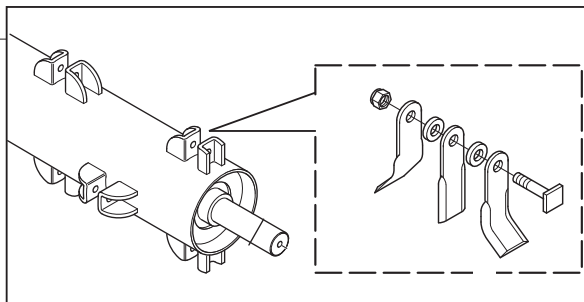
TAV. 040

Pos.	Cod.	Descrizione	Description	Benennung	Description	Descripcion
1	M30400607	SUPPORTO CUSCINETTO RULLO	ROLLER BEARING SUPPORT			
2	F03010160	ANELLO T.A. 50X 65X 8 D3760NBR	OIL SEAL 50X65X8	PARE-HUILE 50X65X8	OELABDICHTUNG 50X65X8	PARA-ACEITE 50X65X8
3	M30400617	ROSETTA SPES.S. D=80 D=42 0,5	WASHER SPACER D=80 D=42 0,5			
4	F04010327	CUSC.D40 D80 B23 62208 2RS1	BEARING D40 D80 B23 62208 2RS2			
5	F02050425	ANELLO E. DI 80X 2,5 U7437 C70	SEEGER RING D.80	BAGUE SEEGER D.80	SEEGERRING D.80	ANILLO SEEGER D.80
6	M27700612	STAFFA RULLO SX CARP.NO SUPP.	ROLLER ARM			
7	F02010022	GHIERA AU.GUK M35X1,5 T.4H ZN>	SELF LOCKING NUT M35X1,5	COLLIER AUTOBL. M35X1,5	SELBSTSP. NUTMUTTER M35X1,5	VIROLA AUTOBL. M35X1,5
8	F01100011	ING.M 6X1 7663-A 9SMNPB28 ZN >	GREASE NIPPLE M6X1 7663-A ZN	GRAISS. A BILLE M6X1 7663A ZN	SCHMIERBUECHE M6X1 7663-A ZN	ENGRAS. DE ESFE. M6X1 7663-AZN
9	M27700611	STAFFA RULLO DX CARP.NO SUPP.	ROLLER ARM			
10	M27723606	RULLO POSTERIORE MOD.230	REAR ROLLER D=219.1			
11	M27725606	RULLO POSTERIORE MOD.250	REAR ROLLER D=219.1			
12	M27728606	RULLO POSTERIORE MOD.280	REAR ROLLER D=219.1			
13	M27730606	RULLO POSTERIORE MOD.300	REAR ROLLER D=219.1			
14	F03010758	ANEL. OR 148,82X3,53 NBR 70	GASKET OR 148,82X3,53 NBR 70	BAGUE OR 148,82X3,53 NBR 70	RING OR 148,82X3,53 NBR 70	ANILLO OR 148,82X3,53 NBR 70
15	F01040110	VITE M10X1,25X35 U5931 8.8ZN >	SCR. M10X1,25X35 U5931 8.8ZN	VIS M10X1,25X35 U5931 8.8 ZN	SCHRAUBE M10X1,25X35 U5931 8.8	TORNILLO M10X1,25X35 U5931 8.8
16	M31400631	STAFFA RASCHIATERRA DX	SCRAPER CLAMP DX			
17	M31400632	STAFFA RASCHIATERRA SX	SCRAPER CLAMP DX			
18	F01010053	VITE M12X1,25X45 U5738 8.8ZN	SCR. M12X1,25X45 U5738 8.8ZN	VIS M 12X1,25X45	SCHRAUBE M 12X1,25X45	TORNILLO M 12X1,25X45
19	F01220047	DADO M12X1,25 D980 8ZN	NUT M12X1,25 D980 8ZN	ECROU M12X1,25 D980 8 ZN	MUTTER M12X1,25 D980 8 ZN	TUERCA M12X1,25 D980 8 ZN
20	F01410076	ROS.M12 13X 24X2,5 U6592 ZN >	WASHER 12 13X 24X2,5 U6592 ZN	RONDEL. M12 13X24X2,5 U6592 ZN	SCHEIBE M12 13X24X2,5 U6592 ZN	ARANDELA M12 13 X24X2,5 ZN
21	F01010288	VITE M12X1,25X35 U5740 8.8ZN	SCR. M12X1,25X35 U5740 8.8ZN	VIS M12X1,25X35 U5740 8.8 ZN	SCHR.M12X1,25X35 U5740 8.8 ZN	TORN.M12X1,25X35 U5740 8.8 ZN
22	M34422601	RASCHIA FANGO TORNADO 230	MUD SCRAPER TORNADO 230			
23	M34424601	RASCHIA FANGO TORNADO 250	MUD SCRAPER TORNADO 250			
24	M31428619	RASCHIA FANGO L=2732	SCRAPER			
25	M31431619	RASCHIA FANGO L=3032	SCRAPER			

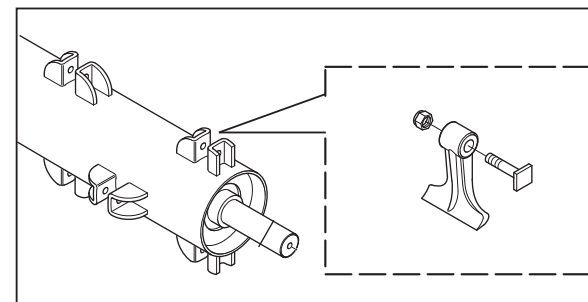
TAV. 050

- 23 - TORNADO 230
- 24 - TORNADO 250
- 25 - TORNADO 280
- 26 - TORNADO 310
- 31 - TORNADO 230
(VERSIONE BANANETI)
(BANANAS VERSIONS)

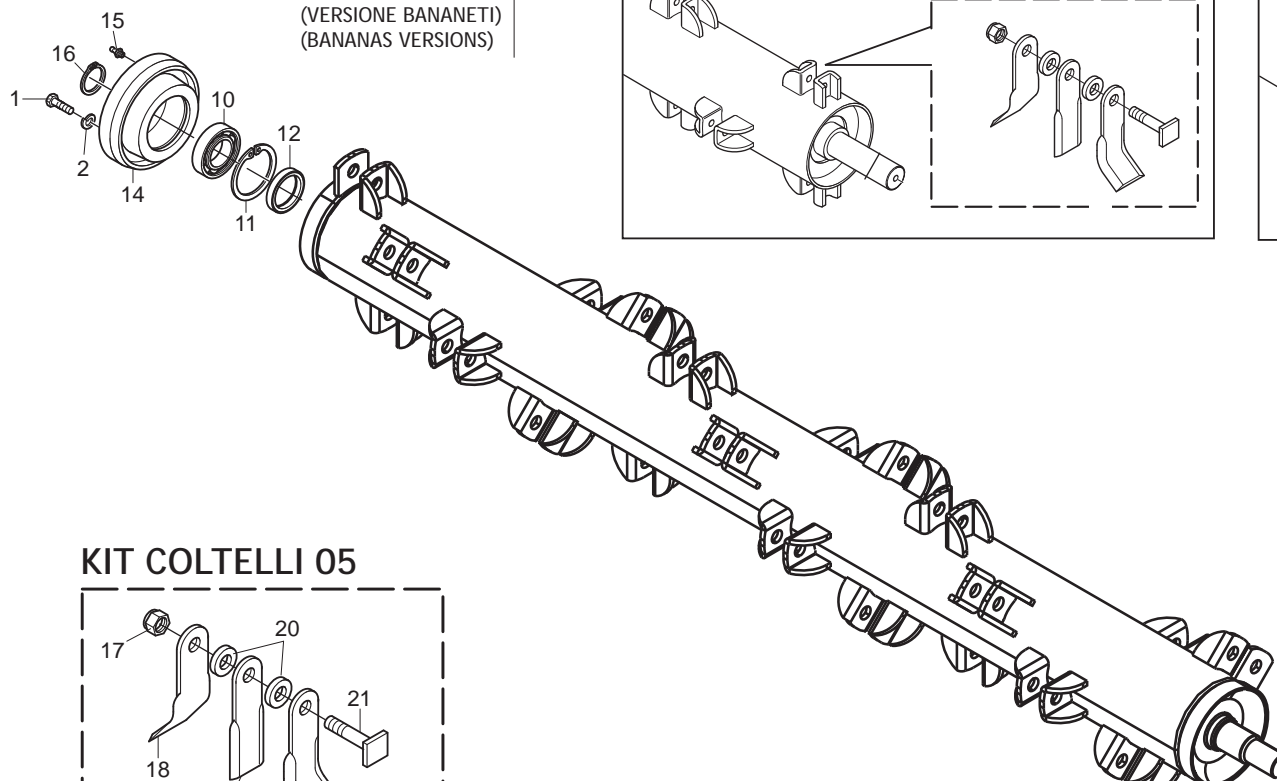
Rotore montato con coltelli
Rotor with knives assembly



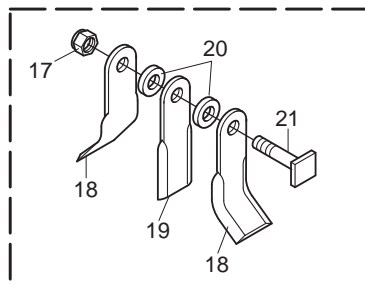
Rotore montato con mazze
Rotor with hammers assembly



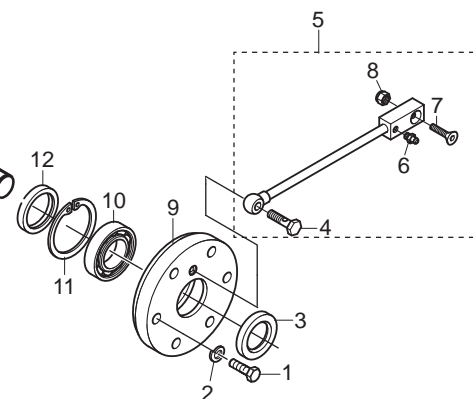
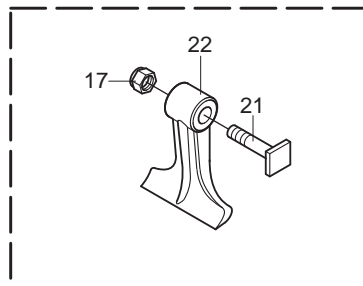
- 27 - TORNADO 230
- 28 - TORNADO 250
- 29 - TORNADO 280
- 30 - TORNADO 310



KIT COLTELLI 05



KIT MAZZE 16

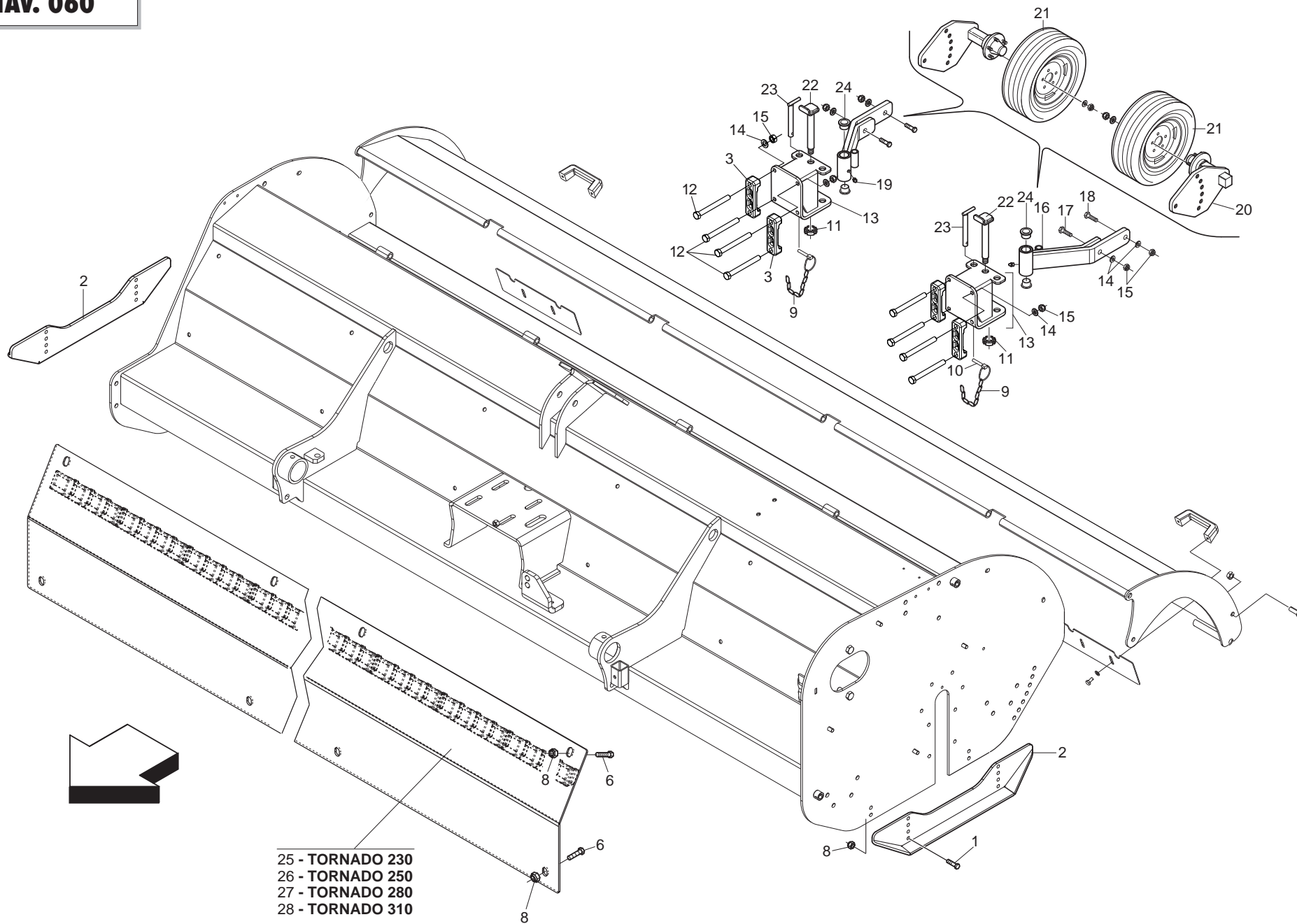


**ROTORE
ROTOR**

TAV. 050

Pos.	Cod.	Descrizione	Description	Benennung	Description	Description
1	F01010288	VITE M12X1,25X35 U5740 8.8ZN	SCR. M12X1,25X35 U5740 8.8ZN	VIS M12X1,25X35 U5740 8.8 ZN	SCHR.M12X1,25X35 U5740 8.8 ZN	TORN.M12X1,25X35 U5740 8.8 ZN
2	F01410076	ROS.M12 13X 24X2,5 U6592 ZN >	WASHER 12 13X 24X2,5 U6592 ZN	RONDEL. M12 13X24X2,5 U6592 ZN	SCHEIBE M12 13X24X2,5 U6592 ZN	ARANDELA M12 13 X24X2,5 ZN
3	F03010313	ANELLO T.AS 55X 80X10 D3760NBR	OIL SEAL 55X 80X10 D3760NBR	BAGUE T.AS 55X 80X10 D3760NBR	SCHUTZRING 55X 80X10 D3760NBR	ANILLO T.AS 55X 80X10 D3760NBR
4	T24004003	VITE FORATA PER INGRASSAGGIO	BOLT	VIS	SCHRAUBE	TORNILLO
5	T24004000	ANS.CAP GRESOR	GREASE NIPPLE	GRAISSEUR	SCHMIERNIPPEL	ENGRASADOR
6	F01100011	ING.M 6X1 7663-A 9SMNPB28 ZN >	GREASE NIPPLE M6X1 7663-A ZN	GRAISS. A BILLE M6X1 7663A ZN	SCHMIERBUECHE M6X1 7663-A ZN	ENGRAS. DE ESFE. M6X1 7663-AZN
7	F01030058	VITE M8X1,25X30 U5933 10.9ZD	SCR. M8X1,25X30 U5933 10.9ZD	VIS M8 X1,25 X30 U5933 10,9 ZD	SCHRAUBE M8X1,25X30 U5933 10,9	TORNILLO M8X1,25X30 U5933 10,9
8	F01220022	DADO M8X1,25 D980 8ZN	NUT M8X1,25 D980 8ZN	ECROU M8X 1,25 D980 8 ZN	MUTTER M8X 1,25 D980 8 ZN	TUERCA M8X 1,25 D980 8 ZN
9	M03400456	SUPPORTO ROTORE SX	LEFT ROTOR SUPPORT			
10	F04010033	CUSC.D55 D100 B25 22211	BEARING D55 D100 B25	ROULEMENT D55 D100 B25	LAGER D55 D100 B25	COJINETE D55 D100 B25
11	F02050471	ANELLO E. DI100X 3 U7437 C70>	SEEGER RING D.100	BAGUE SEEGER D.100	SEEGERRING D.100	ANILLO SEEGER D.100
12	F03010218	ANELLO T.A. 65X100X10 D3760NBR	OIL SEAL 65X100X10	PARE-HUILE 65X100X10 D3760NBR	OELABDICHTUNG 65X100X10 D3760	ANILLO 65X100X10
14	M03400455	SUPPORTO ROTORE DX	RIGHT ROTOR SUPPORT			
15	F01100011	ING.M 6X1 7663-A 9SMNPB28 ZN >	GREASE NIPPLE M6X1 7663-A ZN	GRAISS. A BILLE M6X1 7663A ZN	SCHMIERBUECHE M6X1 7663-A ZN	ENGRAS. DE ESFE. M6X1 7663-AZN
16	F02050215	ANELLO E. DE 55X 2 U7435 C70>	RET. RING FOR SHAFT 55X2 U7435	BAGUE ELASTIQUE UNI 7435	RING 55X 2 U7435 C70	ANILLO UNI 7435
17	F01230258	DADO M20X1,5 U7474 8SZN	NUT M20X1,5 U7474 8SZN	ECROU AUTOBL. M20X1,5	SELBSTSPERR.MUTTER M20X1,5	DADO AUTOBL. M20X1,5
18	T40005142	COLTELLO A Y L=210	BLADE Y L=210	COUTEAU Y L=210	MESSER Y L=210	CUCHILLA Y L=210
19	T40005141	COLT.INTER.DIRITTO L=210	KNIFE STRAIGHT L=210	COUTEAU DROIT L=210	MESSER L=210	CUCHILLA L=210
20	T40005140	DISTANZIALE COLTELLO DIRITTO	SPACER	ENTRETOISE COUTEAU DROIT	DISTANZSTUECK	ARANDELA CUCHILLO
21	T40005131	PERNO COLTELLI ZN	BLADE PIN ZN	GOUJON COUTEAUX ZN	BOLZEN	PERNO
22	T30004027	MAZZA 16 STAMPATA RINFORZATA	HAMMER 16			
23	MSP000009	COMP.ROTOR.C05EL NOSUP.TOR.230	ROTOR C05EL NOSUP.TOR.230			
24	M047254011	COMP.ROTOR.C05EL NOSUP.TOR.250	ROTOR C05EL NOSUP.TOR.250			
25	M047284011	COMP.ROTOR.C05EL NOSUP.TOR.280	ROTOR C05EL NOSUP.TOR.280			
26	MSP000024	COMP.ROTOR.C05EL NOSUP.TOR.310	ROTOR C05EL TOR.310			
27	MSP000011	COMP.ROTSX.M16EL NOSUP.TOR.230	LEFT ROTOR M16EL NOSUP.TOR.230			
28	M047254031	COMP.ROTSX.M16EL NOSUP.TOR.250	LEFT ROTOR M16EL NOSUP.TOR.250			
29	MSP000021	COMP.ROTSX.M16EL NOSUP.TOR.280	LEFT ROTOR M16EL NOSUP.TOR.280			
30	M047314031	COMP.ROTSX.M16EL NOSUP.TOR.310	LEFT ROTOR M16EL NOSUP.TOR.310			
31	M314234121	COMP.ROT.C05EL.NOSUP.TORN.230	BLADE 05 HELICOIDAL ROTOR			

TAV. 060

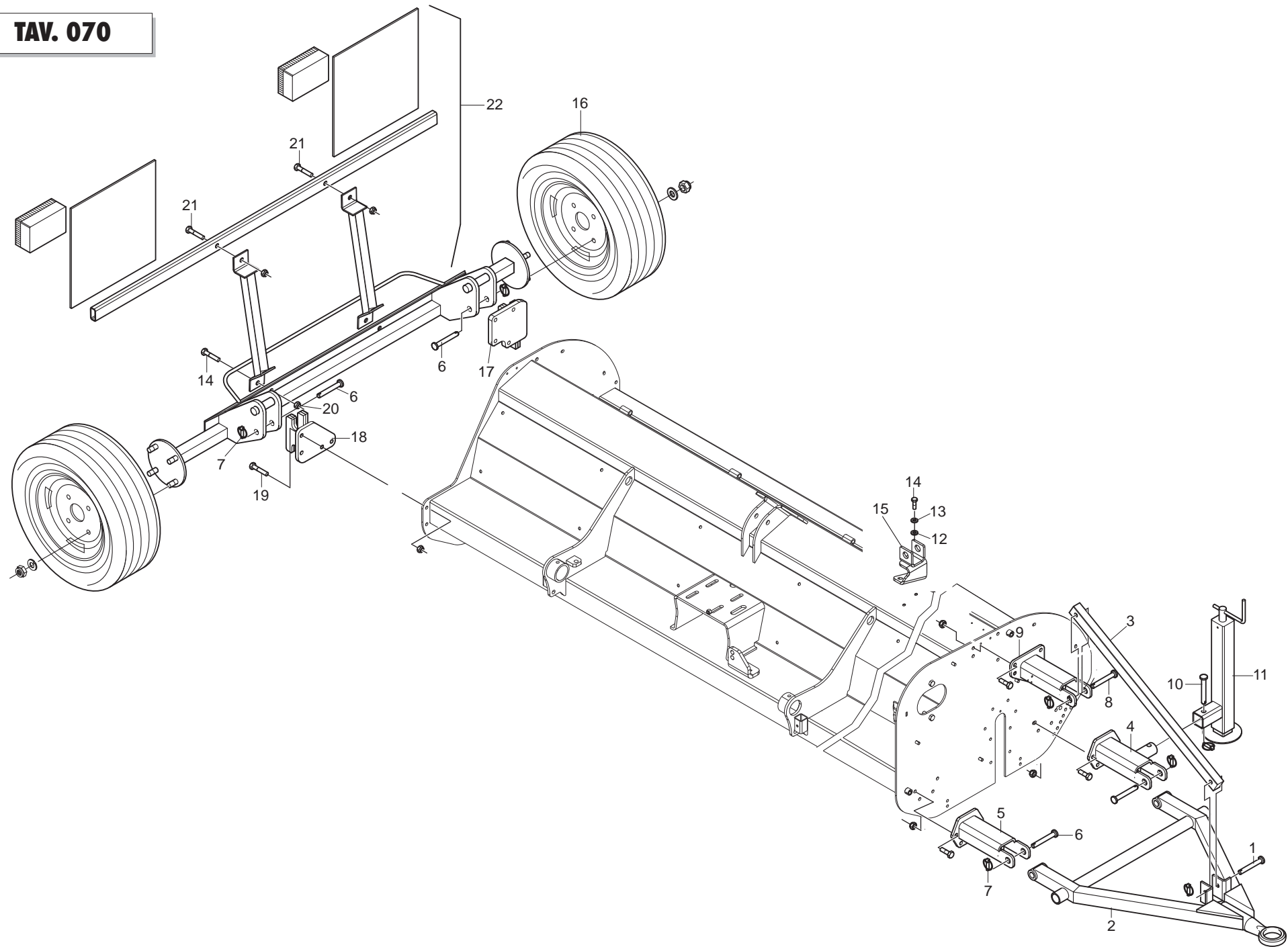


**SLITTE, LAMIERA ANTIUSURA E RUOTE STERZANTI POSTERIORI
SKIDS, DOUBLE SKIN AND REAR STEERING WHEELS**

TAV. 060

Pos.	Cod.	Descrizione	Description	Benennung	Description	Description
1	F01010288	VITE M12X1,25X35 U5740 8.8ZN	SCR. M12X1,25X35 U5740 8.8ZN	VIS M12X1,25X35 U5740 8.8 ZN	SCHR.M12X1,25X35 U5740 8.8 ZN	TORN.M12X1,25X35 U5740 8.8 ZN
2	M31400532	SLITTA TORNADO	SKID TORNADO	GLISSIERE	GLEITKUFE	TRINEO
3	G13710561	SCONTRIO A U SP.10 2F16,5 118	U-SHAPED PLAT.SP.10 2F16,5 118			
6	F01010281	VITE M12X1,25X25 U5740 8.8ZN	SCR. M12X1,25X25 U5740 8.8ZN	VIS M 12X1,25X25	SCHRAUBE M 12X1,25X25	TORNILLO M 12X1,25X25
8	F01220047	DADO M12X1,25 D980 8ZN	NUT M12X1,25 D980 8ZN	ECROU M12X1,25 D980 8 ZN	MUTTER M12X1,25 D980 8 ZN	TUERCA M12X1,25 D980 8 ZN
9	M58100930	CATENELLA L=476	ASSEMBLY CHAIN DMP L=476	CHAINE L=476	KETTE L=476	CADENA L=476
10	F02200529	SPINA SCATTO D.11 H58 ZN >	SNAP PIN D.11 H58 ZN	FICHE A DETENTE D.11 H58 ZN	EINRASTSTIFT D.11 H58 ZN	CLAVIJA DE MUELLE D.11 H58 ZN
11	F02010111	GHIERA AU.GUP M30X1,5 T.4H ZN>	SELF LOCKING NUT M30X1,5	COLLIER AUTOBL. M30X1,5	SELBSTSP. NUTMUTTER M30X1,5	VIROLA AUTOBL. M30X1,5
12	F01010133	VITE M16X1,5X160 U5738 8.8ZN	SCR. M16X1,5X160 U5738 8.8ZN			
13	M31400622	COMP.ATTACCO RUOTE	WHEEL SUPPORT ASSY	ATTELAGE ROUE	RAEDER VERBINDUNG	SOPORTE RUEDAS
14	F01410100	ROS.M16 17X 30X 3 U6592 ZN >	WASHER M16 17X30X3 U6592 ZN	RONDELLE M16 17X30X3 U6592 ZN	SCHRAUBE M16 17X 30X3 U6592 ZN	ARANDELA M16 17X30X 3 U6592 ZN
15	F01220070	DADO M16X1,5 D980 10ZN	NUT M16X1,5 D980 8ZN	ECRO.M16X1,5 D980 8ZN	MUTTER M16X1,5 D980 8ZN	TUER.M16X1,5 D980 8ZN
16	M31400618	COMP.SNODO RUOTA CON BOCCOLE	ARTICULATED WHEELS JOINT	JOINT ROUES	GELENK RAEDER	SOPORTE ARTICULADO RUEDAS
17	F01010120	VITE M16X1,5X80 U5738 8.8ZN	SCR. M16X1,5X80 U5738 8.8ZN	VIS M 16X1,5X80	SCHRAUBE M 16X1,5X80	TORNILLO M 16X1,5X80
18	F01010116	VITE M16X1,5X60 U5738 8.8ZN >	SCR. M16X1,5X60 U5738 8.8ZN	VIS M 16X1,5X60	SCHRAUBE M 16X1,5X60	TORNILLO M 16X1,5X60
19	F01100061	ING.M10X1 7663-A 9SMNPB28 ZN>	GREASE NIPPLE M10X1 7663-A ZN	GRAISSEUR M10X1 7663-A ZN	SCHMIERBUECHSE M10X1 7663-A ZN	ENGRASADOR M10X1 7663-A ZN
20	M32400550	COMP.SEMIASSE RUOTA	COMPL. WHEEL SEMIAXLE SHAFT			
21	F06120096	RUOTA 200/60-14.5 10PR FL.5F >	WHEEL 200/60-14.5 2004	ROUE 200/60-14.5 2004	RAD 200/60-14.5 2004	RUEDA 200/60-14.5 2004
22	M07400589	COMP.PERNO D=30 L=179	PIN	GOUJON	STIFT	PERNO
23	T40005192	ASSIEME PERNO BLOCC. RUOTA ZN	PIN	AXE	BOLZEN	PERNO
24	M07400929	BOCCOLA D=30 D=40 L=30	BUSHING D=30 D=40 L=30	BOUCLE D=30 D=40 L=30	BUECHSE D=30 D=40 L=30	ARANDELA D=30 D=40 L=30
25	M31423930	COMP. ANT+CONT.LAM.TORNADO 230	DOUBLE SKIN FRAME TORNADO 230	TOLE DE BLINDAGE	SCHLEISSBLECH	CHAPA ANTIDESGASTE
26	M31425930	COMP. ANT+CONT.LAM.TORNADO 250	DOUBLE SKIN FRAME TORNADO 250			
27	M31428930	COMP. ANT+CONT.LAM.TORNADO 280	DOUBLE SKIN FRAME TORNADO 280			
28	M31431930	COMP. ANT+CONT.LAM.TORNADO 310	DOUBLE SKIN FRAME TORNADO 310	TOLE DE BLINDAGE	SCHLEISSBLECH	CHAPA ANTIDESGASTE

TAV. 070

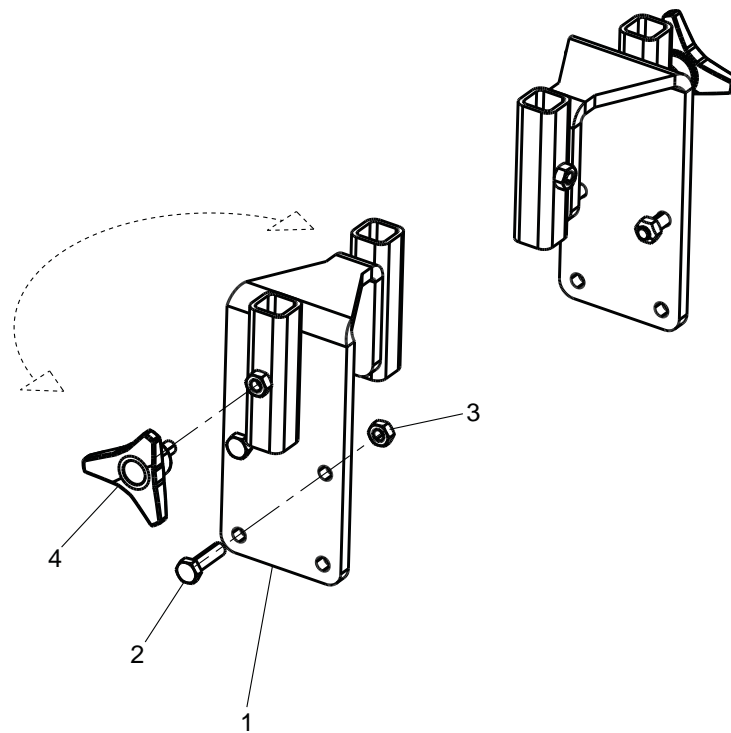
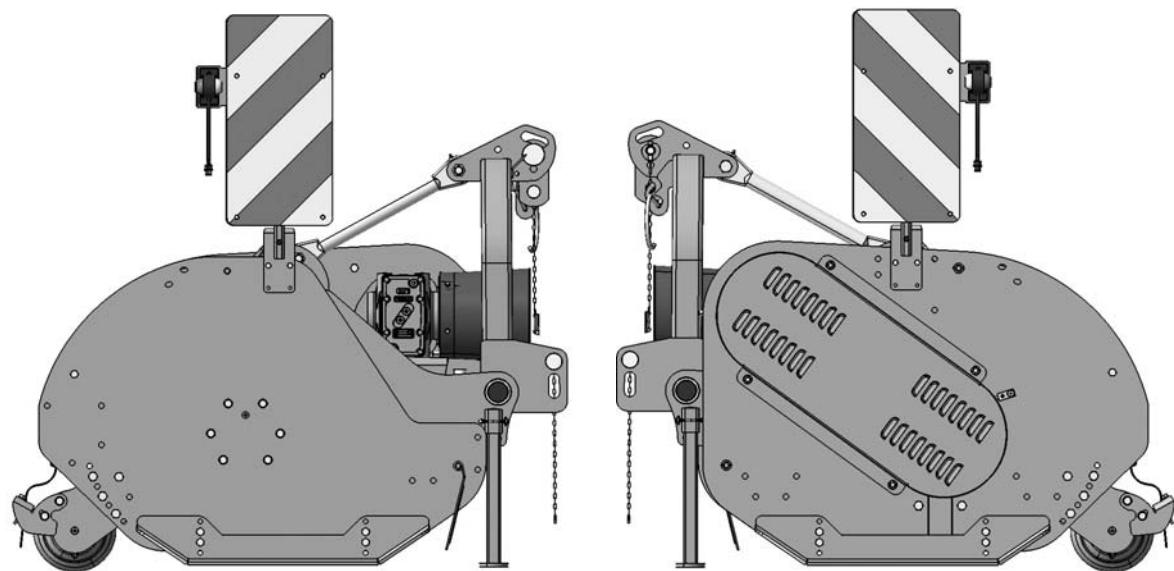
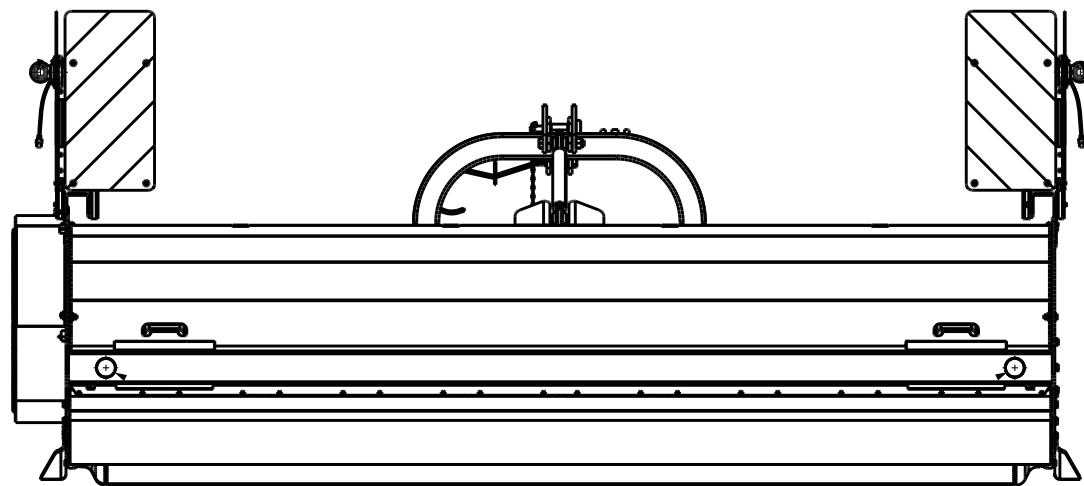


**RUOTE DI TRASPORTO
TRANSPORT WHEELS**

TAV. 070

Pos.	Cod.	Descrizione	Description	Benennung	Description	Description
1	F20100063	PERNO D25 L91 C43 TEST.D35 ZN>	PIN D25 L91 C43 ZN	BOULON D25 L91 C43 ZN	BOLZEN D25 L91 C43 ZN	PERNO D25 L91 C43 ZN
2	M14400595	TIMONE DI TRAINO	DRAWBAR	TIMON	SEITENSTEUER	TIRANTE
3	M14400971	TIRANTE TIMONE	TIE ROD	TIRANT	ZUGSTANGE	TIRANTE
4	M31400901	COMP.AGGANCIO TIMONE TORNADO	DRAWBAR SIDE LINKAGE	ATTELAGE TIMON	STEUER SEITENVERBINDUNG	ATAQUE LATERAL TIRANTE
5	M31400902	COMP.AGGANCIO TIMONE TORNADO	DRAWBAR SIDE LINKAGE	ATTELAGE TIMON	STEUER SEITENVERBINDUNG	ATAQUE LATERAL TIRANTE
6	F20100124	PERNO D32 L135 C40 TEST.D45 Z>	BOLT D32 L135 C40 ZN	BOULON D32 L135 C40 ZN	BOLZEN D32 L135 C40 ZN	PERNO D32 L135 C40 ZN
7	F02200529	SPINA SCATTO D.11 H58 ZN >	SNAP PIN D.11 H58 ZN	FICHE A DETENTE D.11 H58 ZN	EINRASTSTIFT D.11 H58 ZN	CLAVIJA DE MUELLE D.11 H58 ZN
8	F20100133	PERNO D25 L122 C43 TEST.D60 ZN	PIN D25 L122 C43 ZN	BOULON D25 L122 C43 ZN	BOLZEN D25 L122 C43 ZN	PERNO D25 L122 C43 ZN
9	M31400905	COMP.ATTACCO TIMONE TORNADO	DRAWBAR UPPER LINKAGE	ATTELAGE TIMON	STEUER OBERVERBINDUNG	ATAQUE SUPERIOR TIRANTE
10	F20100035	PERNO D19 L90 C43 TEST.D35 ZN	BOLT D19 L86 C43 ZN	BOULON D19 L86 C43	BOLZEN D19 L86 C43	PERNO D19 L86 C43
11	M14400933	PIEDE DI SOLLEVAMENTO	FEET SUPPORTING	SUPPORT FRAISE	FRASE STANDER	SOPORTE FRESADORA
12	F01410076	ROS.M12 13X 24X2,5 U6592 ZN >	WASHER 12 13X 24X2,5 U6592 ZN	RONDEL. M12 13X24X2,5 U6592 ZN	SCHEIBE M12 13X24X2,5 U6592 ZN	ARANDELA M12 13 X24X2,5 ZN
13	F01480123	ROS.G 12,5X22,9X 4 FLZNNC-240H	WASHER M12 ZGP EXTRA P.	RONDELLE M12 ZGP EXTRA P.	UNTERLEGSCHIEBE M12 ZGP EXTRA	ARANDELA M12 ZGP EXTRA P.
14	F01010288	VITE M12X1,25X35 U5740 8.8ZN	SCR. M12X1,25X35 U5740 8.8ZN	VIS M12X1,25X35 U5740 8.8 ZN	SCHR.M12X1,25X35 U5740 8.8 ZN	TORN.M12X1,25X35 U5740 8.8 ZN
15	M31400923	COMPOSTO AGGANCIO TIRANTE	COMPLETE STRETCHER HOOK			
16	F06120096	RUOTA 200/60-14.5 10PR FL.5F >	WHEEL 200/60-14.5 2004	ROUE 200/60-14.5 2004	RAD 200/60-14.5 2004	RUEDA 200/60-14.5 2004
17	M31400908	COMP.SUPPOTO RUOTA SX TORNADO	LEFT WHEEL SUPPORT	SUPPORT ROVE GAUCHE	LINKS RADER HALTER	SOPORTE RVEDA ISQR.
18	M31400907	COMP.SUPPOTO RUOTA DX TORNADO	RIGHT WHEEL SUPPORT	SUPPORT ROVE DROITE	RECHTS RADER HALTER	SOPORTE RUEDA IZQUIERDA
19	F01010318	VITE M14X1,5X40 U5740 8.8ZN	SCR. M14X1,5X40 U5740 8.8ZN	VIS M 14X1,5X40	SCHRAUBE M 14X1,5X40	TORNILLO M 14X1,5X40
20	F01220047	DADO M12X1,25 D980 8ZN	NUT M12X1,25 D980 8ZN	ECROU M12X1,25 D980 8 ZN	MUTTER M12X1,25 D980 8 ZN	TUERCA M12X1,25 D980 8 ZN
21	F01010295	VITE M12X1,25X60 U5740 8.8ZN	SCR. M12X1,25X60 U5740 8.8ZN	VIS M12X1,25X60 U5740 8.8 ZN	SCHRA.M12X1,25X60 U5740 8.8 ZN	TORN. M12X1,25X60 U5740 8.8 ZN
22	M31400914	GR. BARRA LUCE TORNADO	REAR LIGHTS AND WARNING BOARDS	KIT SIGNALISATION ARRIERE	BELEUCHTUNGSEINRICHTUNG	KIT PARA TRANSPORTE

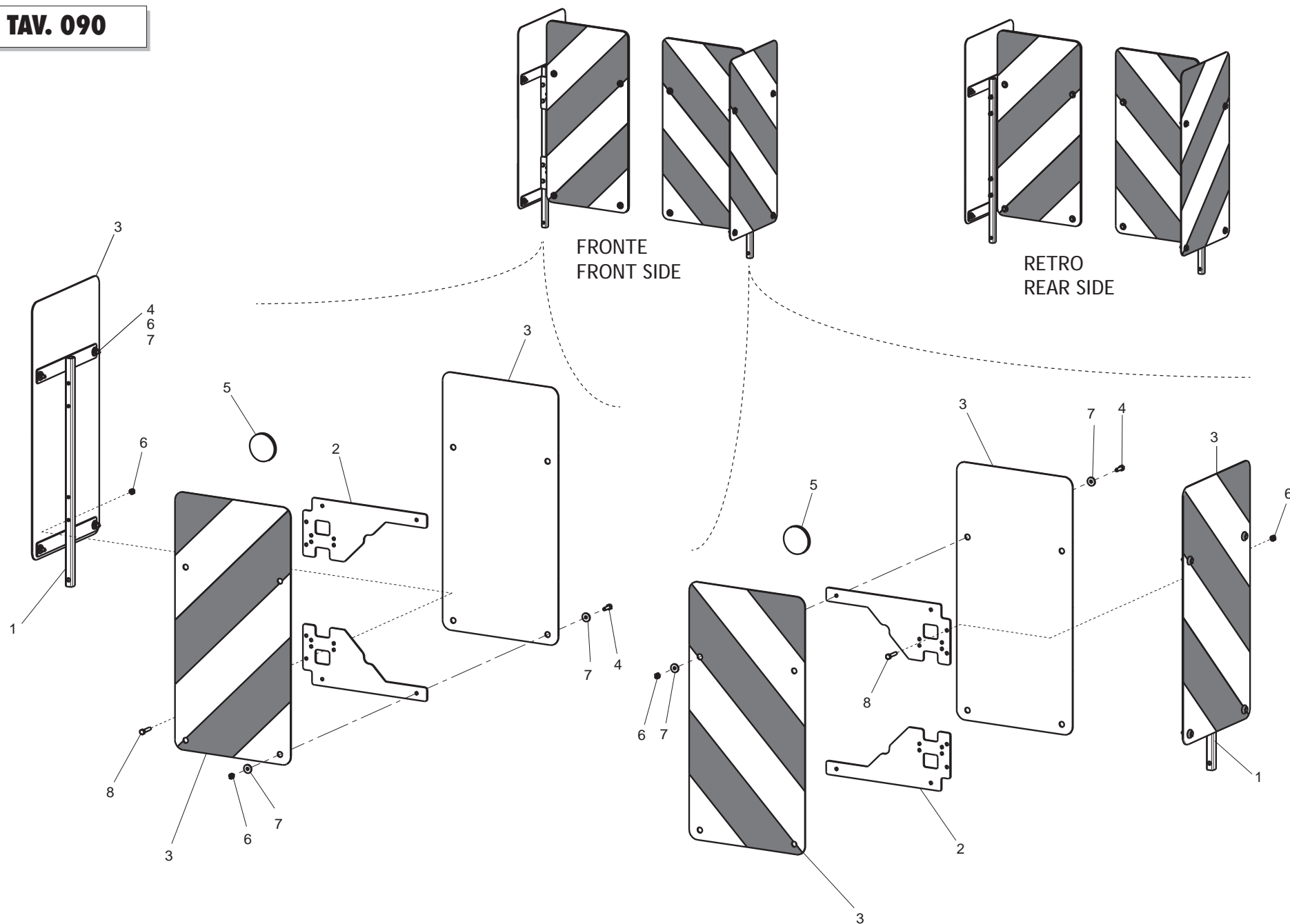
TAV. 080



**KIT SUPPORTI PER TRASPORTO STRADALE
ROAD TRANSPORT SUPPORTS KIT**

TAV. 080

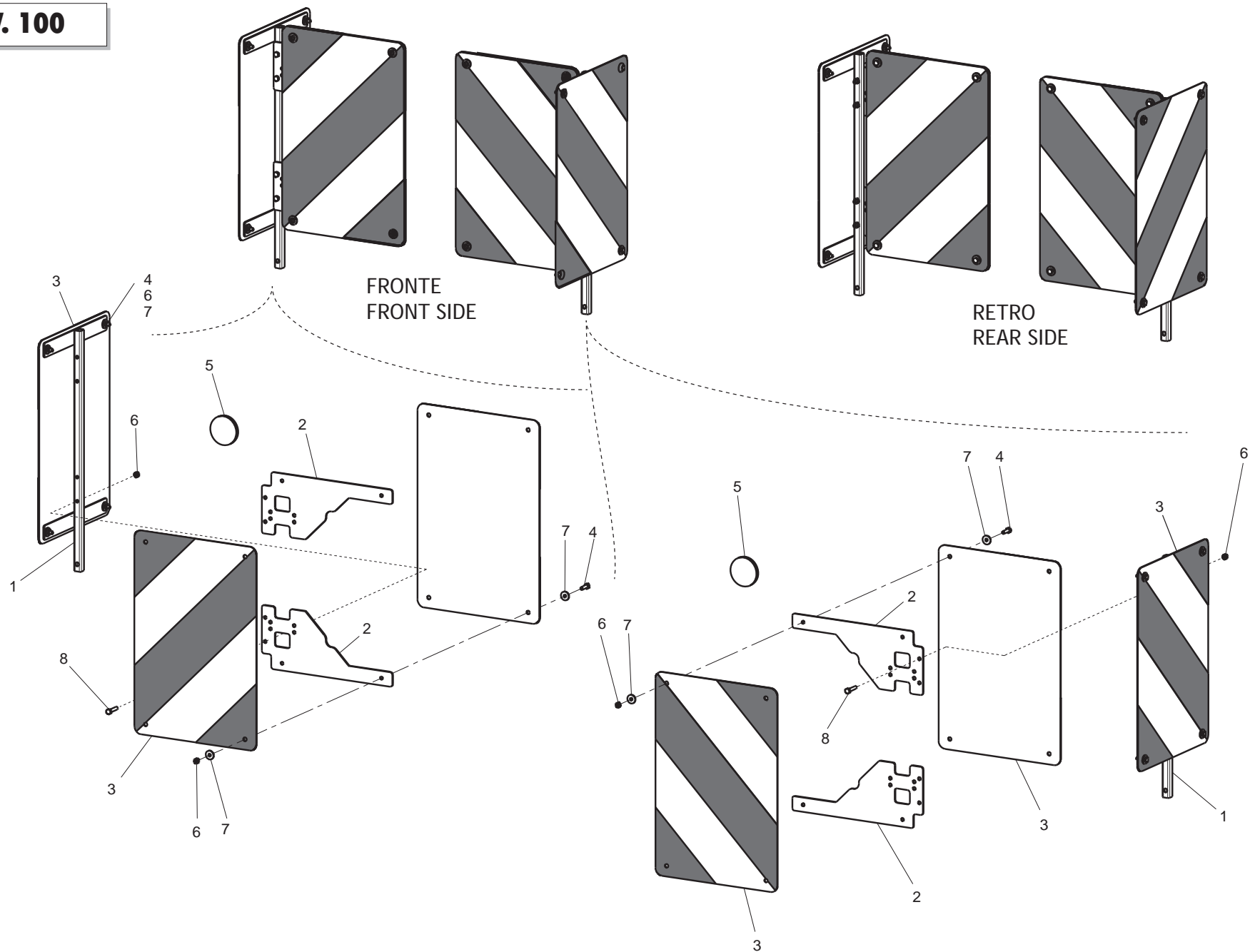
Pos.	Cod.	Descrizione	Description	Benennung	Description	Description
1	M04700555	STAFFA SUPPORTO	SUPPORT BRACKET			
2	F01020445	VITE M8X1,25X30 U5739 8.8ZN >	SCR. M8X1,25X30 U5739 8.8ZN	VIS M 8X1,25X30 U5739 8.8 ZN	SCHRAU, M8X1,25X30 U5739 8.8ZN	TORN. M8X1,25X30 U5739 8.8 ZN
3	F01220022	DADO M8X1,25 D980 8ZN	NUT M8X1,25 D980 8ZN	ECROU M8X 1,25 D980 8 ZN	MUTTER M8X 1,25 D980 8 ZN	TUERCA M8X 1,25 D980 8 ZN
4	F06220018	VOLANTINO 3LOBI D.65-M8X15	3-LOBE HANDWHEEL D.65-M8X15			



KIT TABELLE STRADALI G99600006
ROAD TRANSPORT KIT G99600006

TAV. 090

Pos.	Cod.	Descrizione	Description	Benennung	Description	Description
1	G16612070	TELAIO SUPP.TABELLE STRAD.	FRAME SUPPORT TABLE			
2	M04700558	SUPPORTO TABELLA INGOMBRO	LIGHT-CHART SUPPORT			
3	F05010816	TABELLE (2)CAR.SPORGENTI IT	WARNING BOARDS (2) IT			
4	F01020404	VITE M6X1X20 U5739 8.8ZN	SCREW M6X1X20 U5739 8.8ZN	VIS M6X1X20 U5739 8.8ZN	SCHRAUBE M6X1X20 U5739 8.8ZN	TORNILLO M6X1X20 U5739 8.8ZN
5	F05010820	CATARIFR.TONDO D60 ROSSO >	ROUND REFLECTOR D.60 RED			
6	F01220011	DADO M6X1 D980 8ZN >	NUT M6X1 D980 8ZN	ECROU M6X1 D980 8 ZN	MUTTER M6X1 D980 8 ZN	TUERCA M6X1 D980 8 ZN
7	F01420036	ROS.M6 6,4X 18X1,5 U6593 ZN	WASHER M6 6,4X 18X1,5 U6593 ZN	RONDELLE M6 6,4X18X1,5 U6593ZN	SCHEIBEN M6 6,4X18X1,5U6593 ZN	ARANDELA M6 6,4X18X1,5U6593ZN
8	F01020408	VITE M6X1X30 U5739 8.8ZN	SCR. M6X1X30 U5739 8.8ZN	VIS M 6X1X30	SCHRAUBE M 6X1X30	TORNILLO M 6X1X30

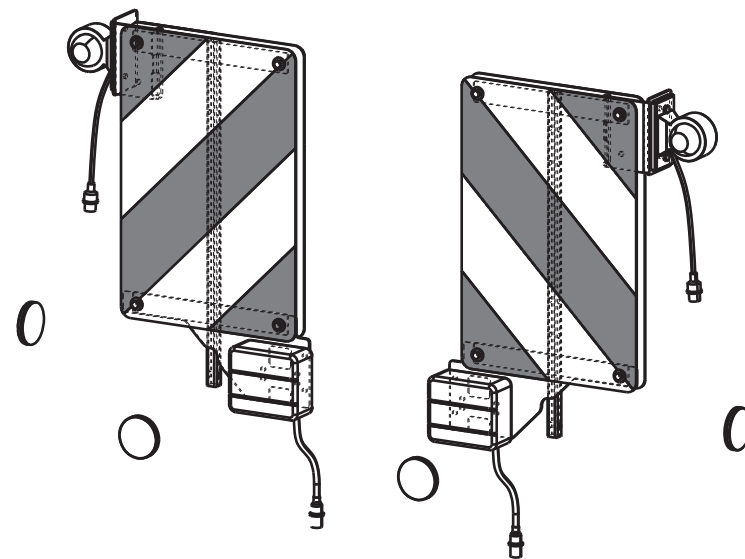
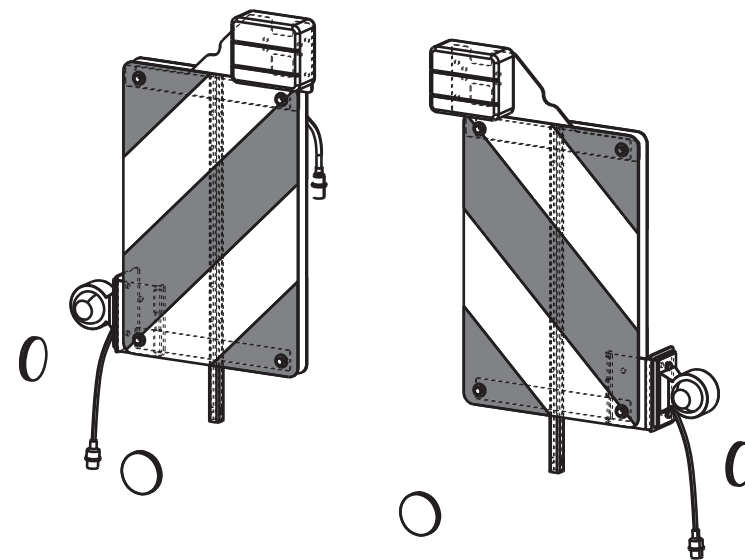
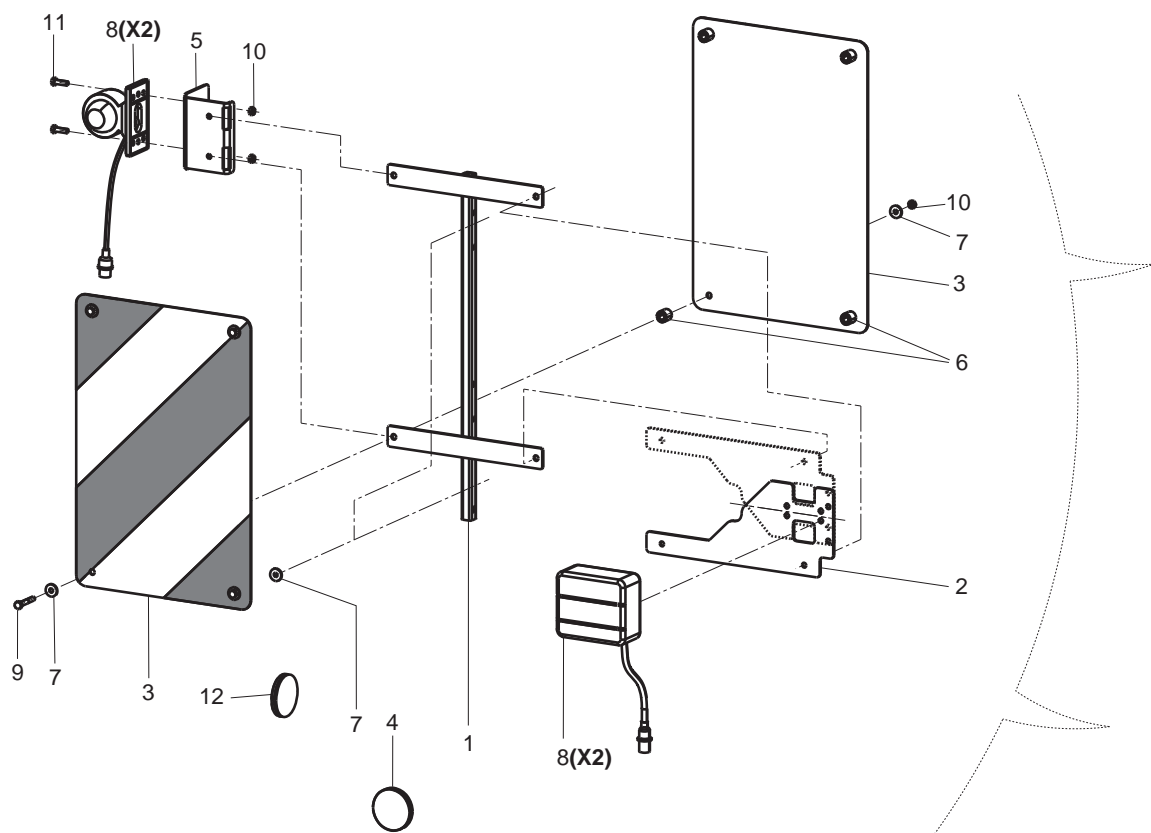


**KIT TABELLE STRADALI G99600017
ROAD TRANSPORT KIT G99600017**

TAV. 100

Pos.	Cod.	Descrizione	Description	Benennung	Description	Description
1	G16612070	TELAIO SUPP.TABELLE STRAD.	FRAME SUPPORT TABLE			
2	M04700558	SUPPORTO TABELLA INGOMBRO	LIGHT-CHART SUPPORT			
3	F05010817	TABELLE (2)CAR.SPORGENTI FR-D>	WARNING BOARDS (2) FR-DE	TABLEAUX (2)AVERTISSEM. FR-DE	BRETT (2) WARNUNG FR-DE	TABLAS (2)CAR.ADVERT. FR-DE
4	F01020404	VITE M6X1X20 U5739 8.8ZN	SCREW M6X1X20 U5739 8.8ZN	VIS M6X1X20 U5739 8.8ZN	SCHRAUBE M6X1X20 U5739 8.8ZN	TORNILLO M6X1X20 U5739 8.8ZN
5	F05010820	CATARIFR.TONDO D60 ROSSO >	ROUND REFLECTOR D.60 RED			
6	F01220011	DADO M6X1 D980 8ZN >	NUT M6X1 D980 8ZN	ECROU M6X1 D980 8 ZN	MUTTER M6X1 D980 8 ZN	TUERCA M6X1 D980 8 ZN
7	F01420036	ROS.M6 6,4X 18X1,5 U6593 ZN	WASHER M6 6,4X 18X1,5 U6593 ZN	RONDELLE M6 6,4X18X1,5 U6593ZN	SCHEIBEN M6 6,4X18X1,5U6593 ZN	ARANDELA M6 6,4X18X1,5U6593ZN
8	F01020408	VITE M6X1X30 U5739 8.8ZN	SCR. M6X1X30 U5739 8.8ZN	VIS M 6X1X30	SCHRAUBE M 6X1X30	TORNILLO M 6X1X30

TAV. 110



**KIT TABELLE STRADALI G99600018
ROAD TRANSPORT KIT G99600018**

TAV. 110

Pos.	Cod.	Descrizione	Description	Benennung	Description	Description
1	G16612070	TELAIO SUPP.TABELLE STRAD.	FRAME SUPPORT TABLE			
2	M04700558	SUPPORTO TABELLA INGOMBRO	LIGHT-CHART SUPPORT			
3	F05010817	TABELLE (2)CAR.SPORGENTI FR-D>	WARNING BOARDS (2) FR-DE	TABLEAUX (2)AVERTISSEM. FR-DE	BRETT (2) WARNUNG FR-DE	TABLAS (2)CAR.ADVERT. FR-DE
4	F05010820	CATARIFR.TONDO D60 ROSSO >	ROUND REFLECTOR D.60 RED			
5	M04700563	SUPPORTO LUCE D'INGOMBRO	SUPPORT LIGHT OVERALL			
6	G18803050	BOCCOLA 8,5X16X16 PL	BUSHING 8,5X16X16 PL			
7	F01420036	ROS.M6 6,4X 18X1,5 U6593 ZN	WASHER M6 6,4X 18X1,5 U6593 ZN	RONDELLE M6 6,4X18X1,5 U6593ZN	SCHEIBEN M6 6,4X18X1,5U6593 ZN	ARANDELA M6 6,4X18X1,5U6593ZN
8	F05010833	KIT LUCI POST.STRAD.ECCEZ. >	KIT REAR ROAD LIGHTS M.EXCEP.			
9	F01020040	VITE M6X1X40 U5737 8.8ZN	SCR. M6X1X40 U5737 8.8ZN	VIS M6X1X40 U5737 8.8ZN	SCHRAU. M6X1X40 U5737 8.8ZN	TORNI. M6X1X40 U5737 8.8ZN
10	F01220011	DADO M6X1 D980 8ZN >	NUT M6X1 D980 8ZN	ECROU M6X1 D980 8 ZN	MUTTER M6X1 D980 8 ZN	TUERCA M6X1 D980 8 ZN
11	F01020404	VITE M6X1X20 U5739 8.8ZN	SCREW M6X1X20 U5739 8.8ZN	VIS M6X1X20 U5739 8.8ZN	SCHRAUBE M6X1X20 U5739 8.8ZN	TORNILLO M6X1X20 U5739 8.8ZN
12	F05010819	CATARIFR.TONDO D60 GIALLO >	ROUND REFLECTOR D.60 YELLOW	JAUNE RÉFLECTEUR ROUND	RUNDREFLEKTOR GELB D60	REFLECTOR REDONDO AMARILLO

TAV. 120

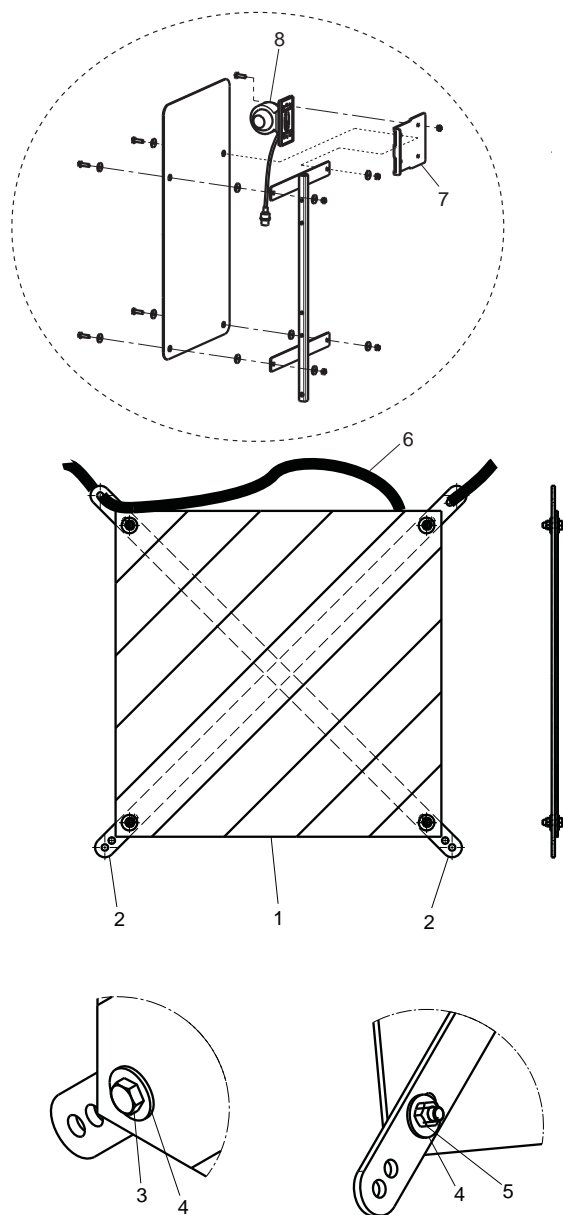
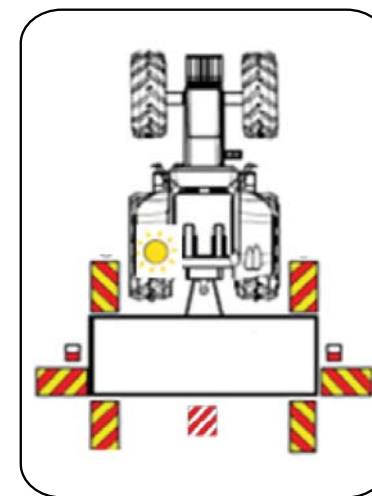
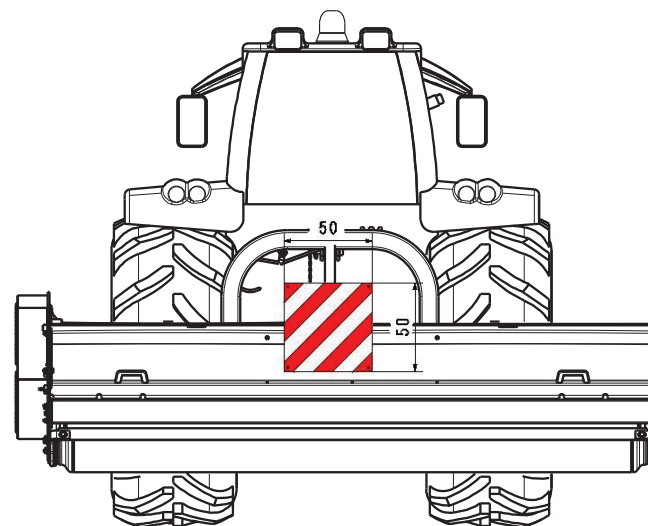


TABELLA SUPPLEMENTARE TIGRE 300
(PER IL MONTAGGIO VEDERE ANCHE TAV.120)
SUPPLEMENTARY ROAD PANEL FOR TIGRE 300
(FOR ASSEMBLY SEE ALSO TAB.120)



PER IL POSIZIONAMENTO FARE RIFERIMENTO ALLE
ISTRUZIONI ALLEGATE ALLA TABELLA.


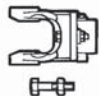
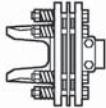
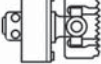

FOR POSITIONING MAKE REFERENCE TO THE INSTRUCTIONS
INCLUDED WITH THE ROAD PANELS.

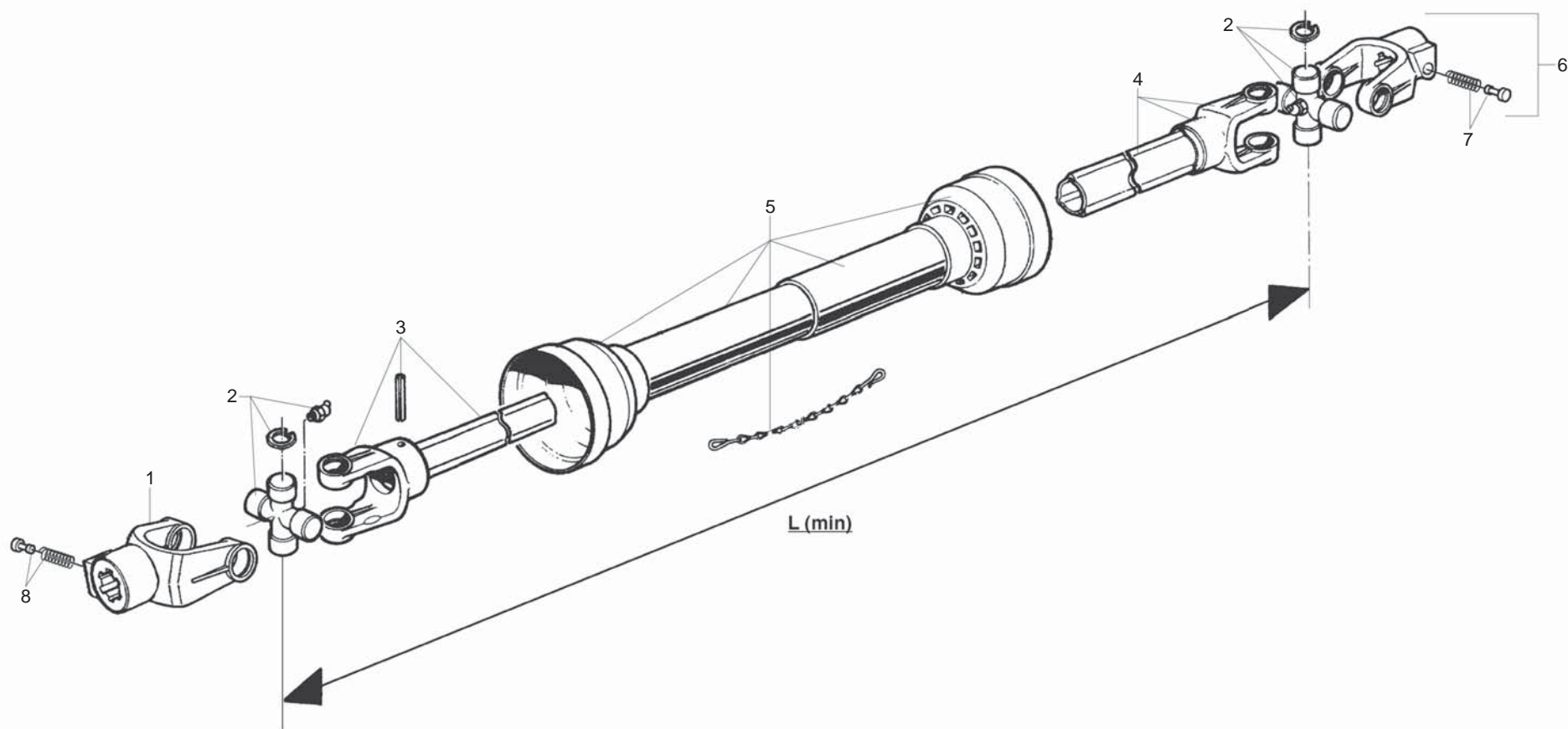
**TABELLA LARGHEZZA ECCEZIONALE G99600032
EXCEPTIONAL WIDTH ROAD PANEL G99600032**

TAV. 120

Pos.	Cod.	Descrizione	Description	Benennung	Description	Description
1	F05011000	TABELLA CAR. SPORGENTI 500X500	WARNING BOARD 500X500			
2	M75400043	SUPPORTO TAB.CAR.SPORG.500X500	SUPPORT FOR PANEL 500X500 IT			
3	F01020440	VITE M8X1,25X25 U5739 8.8ZN >	SCR. M8X1,25X25 U5739 8.8ZN	VIS M8X1,25X25 U5739 8.8 ZN	SCHRAUBE M8X1,25X25U5739 8.8ZN	TORNIL.M8X1,25X25 U5739 8.8 ZN
4	F01420048	ROS.M8 8,4X 24X 2 U6593 ZN	WASHER M8 8,4X 24X2 U6593 ZN	RONDELLE M8 8,4X24X 2 U6593 ZN	SCHEIBEN M8 8,4X24X 2 U6593 ZN	ARANDELA M8 8,4X 24X2 U6593 ZN
5	F01220022	DADO M8X1,25 D980 8ZN	NUT M8X1,25 D980 8ZN	ECROU M8X 1,25 D980 8 ZN	MUTTER M8X 1,25 D980 8 ZN	TUERCA M8X 1,25 D980 8 ZN
6	F05150355	CORDA ELAST. + GANCIO D=8X800	ELASTIC CABLE + HOOK D8 L800			
7	M04700562	SUPPORTO LUCE D'INGOMBRO	SUPPORT LIGHT OVERALL			
8	F05010847	KIT LUCI PORT.POST.LAT.ECCEZ.	KIT REAR LIGHTS LATOUTSTANDING			

TAV. 130

				
9 - F08011594 L=710	--	--	--	CL 250/ML 230-270



**CARDANO
CARDAN SHAFT**

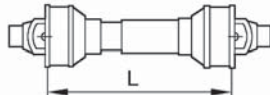

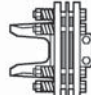
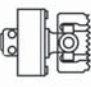
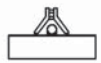
TAV. 130

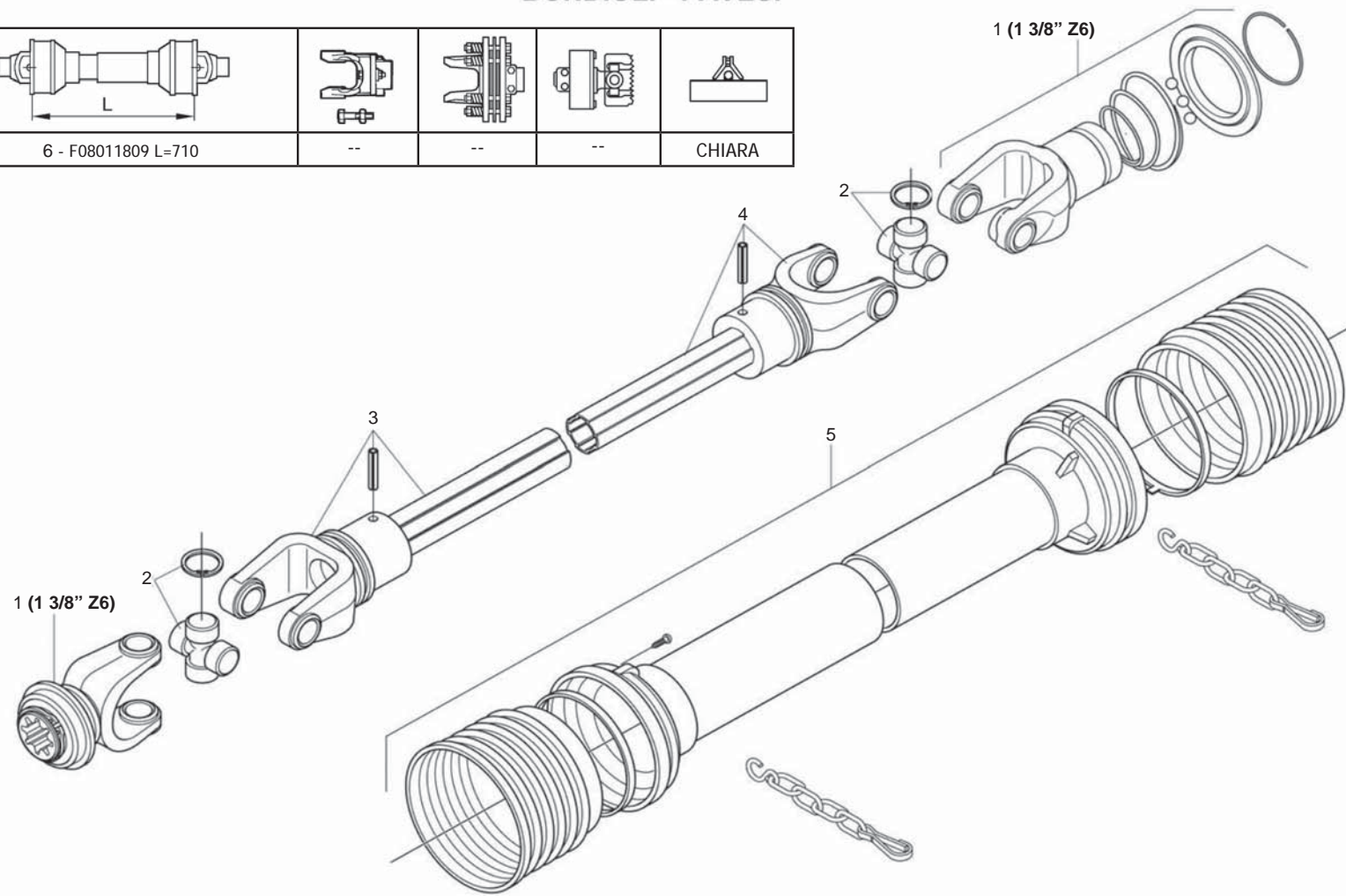
Pos.	Cod.	Descrizione	Description	Benennung	Description	Description
1	F08010459	FORCELLA COMP.PULS.-1'3/8 Z6	LINKAGE FORK-1'3/8 Z6	FOURCHE ATTELAGE-1'3/8 Z6	GABELSTUECK-1'3/8 Z6	HORQUILLA ATAQUE-1'3/8 Z6
2	F08010686	CROCIERA COMPLETA	SPIDER ASSY	CROISIERE COMPL.	GELENKKREUZ KOMPL.	CRUCETA COMPLETA
3	F08010533	FORCELLA CON TUBO INTERNO >	FORK WITH INTERNAL PIPE	FOURCHE AVEC TUBE INTERIEUR	GABELST. + INNENROHR	HORQUILLA + TUBO INTERNO
4	F08010721	FORCELLA + TUBO ESTERNO >	FORK WITH EXTERNAL PIPE	FOURCHE AVEC TUBE EXTERIEUR	GABELST. + AUSSENROHR	HORQUILLA + TUBO ESTERNO
5	F08010858	PROTEZIONE COMPLETA	PROTECTION ASSY	PROTECTION COMPL.	KOMPL. SCHUTZ	PROTECCION COMPL.
6	F08010459	FORCELLA COMP.PULS.-1'3/8 Z6	LINKAGE FORK-1'3/8 Z6	FOURCHE ATTELAGE-1'3/8 Z6	GABELSTUECK-1'3/8 Z6	HORQUILLA ATAQUE-1'3/8 Z6
7	F08011168	339107 PULSANTE	YOKE PIN 339107	POUSSOIR COMPL.	DRUCKKNOPF KOMPL.	PULSADOR COMPL.
8	F08011168	339107 PULSANTE	YOKE PIN 339107	POUSSOIR COMPL.	DRUCKKNOPF KOMPL.	PULSADOR COMPL.
9	F08011594	ALBERO CARDANICO COMPLETO GSM	UNIVERSAL P T O SHAFT			

TAV. 140

BONDIOLI - PAVESI

OPTIONAL

				
6 - F08011809 L=710	--	--	--	CHIARA



**CARDANO
CARDAN SHAFT**

TAV. 140

Pos.	Cod.	Descrizione	Description	Benennung	Description	Descripcion
1	F08013041	FORC.COMPL. BO S8 3/8Z63	FORK			
2	F08010690	CROCIERA COMPLETA >	SPIDER ASSY	CROISILLON COMPL.	GELENKKREUZ KOMPL.	CRUCETA COMPLETA
3	F08012010	FORCELLA +T.EST. BO SH >	FORK WITH EXTERNAL PIPE	FOURCHE AVEC TUBE EXT.	GABELST. + AUSSENROHR	HORQUILLA + TUBO EXT.
4	F08013014	FORC.INT.S8+TUB 1000 >	FORK WITH INTERNAL PIPE	FOURCHE AVEC TUBE INTERIEUR	GABELST. + INNENROHR	HORQUILLA + TUBO INTERNO
5	F08010861	PROTEZIONE COMPLETA BOND.S9 >	PROTECTION ASSY BOND.L=820			
6	F08011809	CAR 50 BO 38Z6 DIR L990	PTO SHAFT 38Z6 DIR			

**USATE SEMPRE RICAMBI ORIGINALI
ALWAYS USE ORIGINAL SPARE PARTS
IMMER DIE ORIGINAL-ERSATZTEILE VERWENDEN
EMPLOYEZ TOUJOURS LES PIECES DE RECHANGE ORIGINALES
UTILIZAR SIEMPRE REPUESTOS ORIGINALES**



**Servizio Assistenza Tecnica - After Sales Service
Servizio Ricambi - Spare Parts Service**



maschio.com

DEALER:



MASCHIO GASPARDO SpA

Registered Office and Production Plant

Via Marcello, 73 - 35011 Campodarsego (Padova) - Italy

Tel. +39 049 9289810

Fax +39 049 9289900

info@maschio.com

www.maschio.com

MASCHIO DEUTSCHLAND GMBH

Außere Nürnberger Straße 5

D - 91177 Thalmässing - Deutschland

Tel. +49 (0) 9173 79000

Fax +49 (0) 9173 790079

dialog@maschio.de

www.maschio.de

MASCHIO FRANCE Sarl

1 rue Denis Papin ZA

F - 45240 La Ferte St. Aubin

France

Tel. +33 (0) 2.38.64.12.12

Fax +33 (0) 2.38.64.66.79

info@maschio.fr

ООО МАСКИО-ГАСПАРДО РУССИЯ

04130, Россия,

Волгоградская область,

г. Волжский, ул. Пушкина, 117 «б».

Тел.: +7 8443 203100

факс: +7 8443 203101

e-mail: info@maschio.ru

MASCHIO GASPARDO SpA

Production Plant

Via Mussons, 7 - 33075 Morsano al Tagliamento (PN) - Italy

Tel. +39 0434 695410

Fax +39 0434 695425

info@gaspardo.it

MASCHIO GASPARDO NORTH AMERICA Inc.

112 3rd Avenue East

DeWitt - IA 52742

Ph. +1 563 6596400

Fax +1 563 6596404

info@maschio.us

MASCHIO-GASPARDO ROMANIA S.R.L.

Strada Înfrătirii, F.N.

315100 Chisineu-Cris (Arad) -România

Tel. +40 257 307030

Fax +40 257 307040

info@maschio.ro

MASCHIO IBERICA S.L.

MASCHIO-GASPARDO POLAND

MASCHIO-GASPARDO UCRAINA

GASPARDO-MASCHIO TURCHIA

MASCHIO-GASPARDO CINA

MASCHIO-GASPARDO INDIA

MASCHIO-GASPARDO KOREA