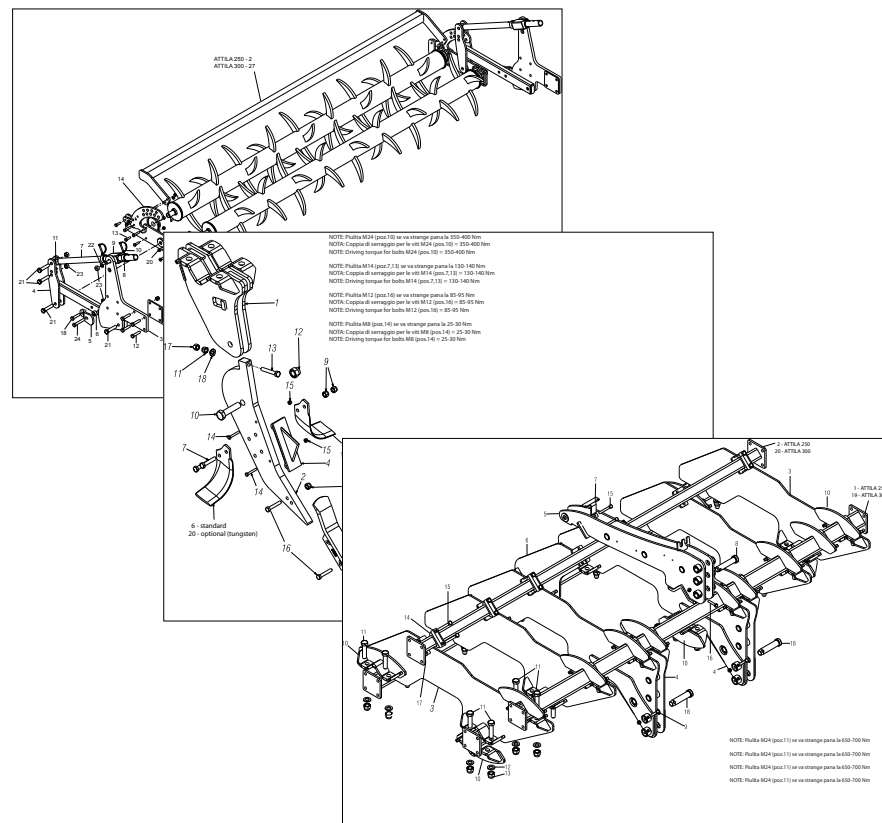


# MASCHIO GASPARDO



# ATTILA

Cod: F07011059 04 / 2013

- \*) Valido per Paesi UE
- \*) Valid for EU member countries
- \*) Gilt für EU-Mitgliedsländer
- \*) Valable dans le Pays UE
- \*) Válido para Países UE
- \*) Valabil pentru țările UE

- IT** PARTI DI RICAMBIO
- EN** SPARE PARTS
- DE** ERSATZTEILE
- FR** PIÈCES DÉTACHÉES
- ES** PIEZAS DE REPUESTO
- RO** PIESE DE SCHIMB

## PARTI DI RICAMBIO

Le ordinazioni delle parti di ricambio vanno fatte presso i nostri concessionari di zona e devono essere sempre corredate dalle seguenti indicazioni:

- **Tipo, modello e numero di matricola dell'attrezzatura.** Tali dati sono stampigliati nell'apposita targhetta di cui è dotata ogni attrezzatura.
- **Numero di codice della parte richiesta** rilevabile dal catalogo ricambi.
- **Descrizione del particolare e quantità richiesta.**
- **Numero della tavola.**
- **Mezzo di trasporto.** Nel caso questa voce non sia specificata, la Ditta Costruttrice, pur dedicando a questo servizio una particolare cura, non risponde di eventuali ritardi di spedizione dovuti a cause di forza maggiore.

Le spese di trasporto si intendono sempre a carico del destinatario. La merce viaggia a rischio e pericolo del committente anche se venduta franco destino.

**NOTA:** Il termine **(Dx) Destro** o **(Sx) Sinistro** della macchina o di parti di essa, è inteso guardando la macchina dalla parte posteriore. Le eccezioni saranno indicate.

## SPARE PARTS

Orders must be transmitted through our area dealers and should always include the following indications:

- **Type, model and serial number of the machine.** These data are punched on the data plate with which every implement is equipped.
- **Code number of the required spare part.** This will be found in the spare parts catalogue.
- **Description of the part and required quantity.**
- **Table number.**
- **Means of dispatch.** If this item is not indicated, the Manufacturer, while dedicating particular care to this service, shall not be held responsible for delays in delivery caused by cases of force majeure.

Transport expenses shall always be at the consignee's charge. The goods travel at the purchaser's risk and peril even when sold ex destination.

**NOTE:** The symbols **(Dx) right** and **(Sx) left**, concerning the machine or single parts of it, are referred, as in the figure, to a rear view of them. Exceptions will be indicated.

## ERSATZTEILE

Die Bestellungen müssen bei unseren Gebietshändler angegeben werden. Bei der Bestellung sind stets die folgenden Angaben zu machen:

- **Typ, Modell und Serien-Nummer des Geräts.** Diese Daten stehen auf dem Typenschild, mit dem jedes Gerät versehen ist.
- **Artikel Nr. der erforderlichen Ersatzteile.** Diese stehen im Ersatzteil-Katalog.
- **Beschreibung des Ersatzteils und die erforderliche Stückzahl.**
- **Tafelnummer.**
- **Versandmittel.** Wenn dieser Punkt nicht spezifiziert wird, haftet die Herstellerfirma nicht für etwaigen Lieferverzug aufgrund höherer Gewalt, auch wenn er diesen Service besonders aufmerksam abwickelt.

Die Frachtkosten gehen dagegen immer zu Lasten des Empfängers. Die Ware reist auf Gefahr und Risiko des Auftraggebers, auch wenn frei Haus Verkauft vereinbart worden ist.

**N.B.:** Die Merkzeichen **(Dx) rechts** und **(Sx) links** betreffen eine rückwärtige Aussicht der Maschine oder Teile von ihr (siehe Bild). Ausnahmen werden gezeitigt.

## PIECES DÉTACHÉES

Les ordres doivent être effectués auprès de nos concessionnaires de zone en précisant les indications suivantes:

- **Type, modèle et numéro de série de la machine.** Ces données sont gravées sur la plaque d'identification de chaque outil.
- **Numéro de code de la pièce détachée** indiqué sur le catalogue des pièces détachées.
- **Description de la pièce et quantité requise.**
- **Numéro de plan.**
- **Moyen d'expédition.** Si cette rubrique n'est pas indiquée, le Constructeur, bien que soucieux de ce service, ne répond pas des retards d'expédition pour des causes de force majeure. Les frais de transport sont toujours à la charge du destinataire. La marchandise voyage aux risques et périls de l'acheteur même si vendue franco de port.

**N.B.:** Les références **(Dx) droit** et **(Sx) gauche** de la machine ou des parties de la même, est entendue, comme de la figure, en regardant la machine de derriere dans le sens de marche.

## RESPUESTOS

Los pedidos han de efectuarse en nuestros consesionarios de zona y deben incluir siempre las siguientes indicaciones:

- **Tipo, modelo y número de matrícula del equipo.** Dichos datos están impresos en la relativa placa presente en el equipo.
- **Número de código de la parte requerida** presente en el catálogo respuestos.
- **Descripción de la pieza y cantidad requerida.**
- **Numero de ilustración.**
- **Medio de transporte.** En caso que este ítem no esté especificado, el Fabricante, aún prestando la debidas consideraciones para este aspecto, no responde por eventuales retardos de env'o debidos a causas de fuerza mayor.

Los gastos de transporte se consideran siempre a cargo del destinatario. La mercadería viaja bajo riesgo y peligro del comprador, incluso cuando se vende franco destino.

**N.B.:** La referencia **(Dx) derecha** o **(Sx) izquierda** de la máquina o de sus componentes, se entien-de, como en la figura, mirando la máquina por la parte trasera. Se indicarán las excepciones.

## PIESE DE SCHIMB

Comandarea pieselor de schimb se va face prin intermediul concesionarilor din zonă și trebuie să fie întotdeauna însoțite de următoarele date:

- **Tipul, modelul și numărul de matricolă al utilajului.** Aceste date se găsesc pe plăcuța de identificare a fiecărui utilaj.
- **Numărul de cod al piesei de schimb cerute**, care se găsește în manual.
- **Descrierea piesei de schimb și cantitatea cerută.**
- **Numărul desenului în care se găsește piesa.**
- **Mijloc de transport.** În cazul în care acesta nu este specificat, Firma Constructoare poate avea un regim special, nu răspunde de eventualele întârzieri de expediere datorate unor cauze de forță majoră.

Cheltuielile de transport sunt suportate de destinatar. Marfa este transportată pe riscul celui care efectuează comanda, chiar dacă marfa este vândută în condiții franco-destinatare.

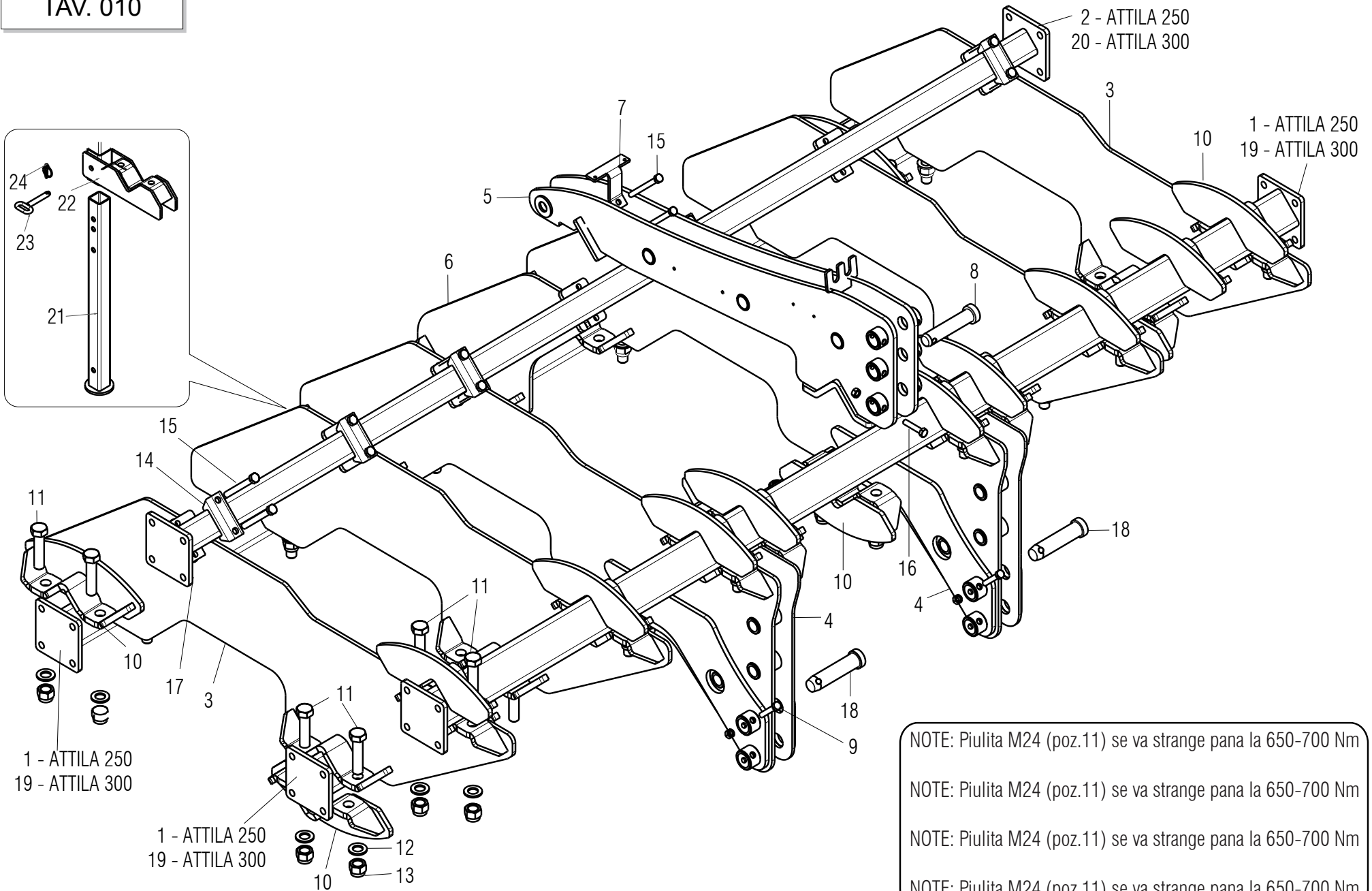
**NOTA:** Termenul **(Dx) Dreapta** sau **(Sx) Stânga** a utilajului sau a părților acestuia, este privind utilajul din partea posterioară. Excepțiile vor fi indicate.

| <b>Nr. Tav.</b> | <b>Descrizione</b>                 | <b>Pag.</b> | <b>Nr. Tav.</b> | <b>Description</b>                    | <b>Pag.</b> |
|-----------------|------------------------------------|-------------|-----------------|---------------------------------------|-------------|
| TAV. 010        | Telaio                             | 4           | TAV. 010        | Cadre                                 | 4           |
| TAV. 020        | Elemento operatore                 | 6           | TAV. 020        | Element operateur                     | 6           |
| TAV. 030        | Doppio rullo posteriore meccanico  | 8           | TAV. 030        | Double rouleau posterieur mecanique   | 8           |
| TAV. 040        | Doppio rullo posteriore idraulico  | 10          | TAV. 040        | Double rouleau posterieur hydraulique | 10          |
| TAV. 050        | Impianto oleodinamico rullo        | 12          | TAV. 050        | Installation hydraulique rouleau      | 12          |
| TAV. 060        | Bandinella laterale meccanica      | 14          | TAV. 060        | Protecion latérale mecanique          | 14          |
| TAV. 070        | Bandinella laterale idropneumatica | 16          | TAV. 070        | Protecion latérale hydropneumatique   | 16          |
| TAV. 080        | Ruote di profondità                | 18          | TAV. 080        | Roue de profondeur                    | 18          |
| TAV. 090        | Kit luci                           | 20          | TAV. 090        | Kit d'eclairage                       | 20          |

| <b>Nr. Tav.</b> | <b>Description</b>            | <b>Pag.</b> | <b>Nr. Tav.</b> | <b>Descripcion</b>                 | <b>Pag.</b> |
|-----------------|-------------------------------|-------------|-----------------|------------------------------------|-------------|
| TAV. 010        | Frame                         | 4           | TAV. 010        | Bastidor                           | 4           |
| TAV. 020        | Operator element              | 6           | TAV. 020        | Elemento operadore                 | 6           |
| TAV. 030        | Mechanical double rear roller | 8           | TAV. 030        | Doble rodillo posterior mecanico   | 8           |
| TAV. 040        | Hydraulic double rear roller  | 10          | TAV. 040        | Doble rodillo posterior hidraulico | 10          |
| TAV. 050        | Hydraulic plant roller        | 12          | TAV. 050        | Instalacion hidraulica rollo       | 12          |
| TAV. 060        | Mechanical side shield        | 14          | TAV. 060        | Bandas mecanicas                   | 14          |
| TAV. 070        | Hydropneumatic side shield    | 16          | TAV. 070        | Bandas hidroneumáticas             | 16          |
| TAV. 080        | Depth wheel                   | 18          | TAV. 080        | Rueda de profundidad               | 18          |
| TAV. 090        | Lighting kit                  | 20          | TAV. 090        | Kit de iluminacion                 | 20          |

| <b>Nr. Tav.</b> | <b>Beschreibung</b>                  | <b>Pag.</b> | <b>Nr. Tav.</b> | <b>Descriere</b>                    | <b>Pag.</b> |
|-----------------|--------------------------------------|-------------|-----------------|-------------------------------------|-------------|
| TAV. 010        | Rahmen                               | 4           | TAV. 010        | Cadru                               | 4           |
| TAV. 020        | Betreiber elemente                   | 6           | TAV. 020        | Element operator                    | 6           |
| TAV. 030        | Mechanische doppelte hintere walze   | 8           | TAV. 030        | Rulou dublu posterior mecanic       | 8           |
| TAV. 040        | Hydraulischen doppelte hintere walze | 10          | TAV. 040        | Rulou dublu posterior hidraulic     | 10          |
| TAV. 050        | Walze hydraulischen Anzug            | 12          | TAV. 050        | Instalație hidraulică rulou         | 12          |
| TAV. 060        | Mechanische seitenschutzblechs       | 14          | TAV. 060        | Limitator de brazdă mecanic         | 14          |
| TAV. 070        | Hydropneumatische seitenschutzblechs | 16          | TAV. 070        | Limitator de brazdă hidropneumatică | 16          |
| TAV. 080        | Tiefenrad                            | 18          | TAV. 080        | Roată de adâncime                   | 18          |
| TAV. 090        | Lichter kit                          | 20          | TAV. 090        | Kit lumini                          | 20          |

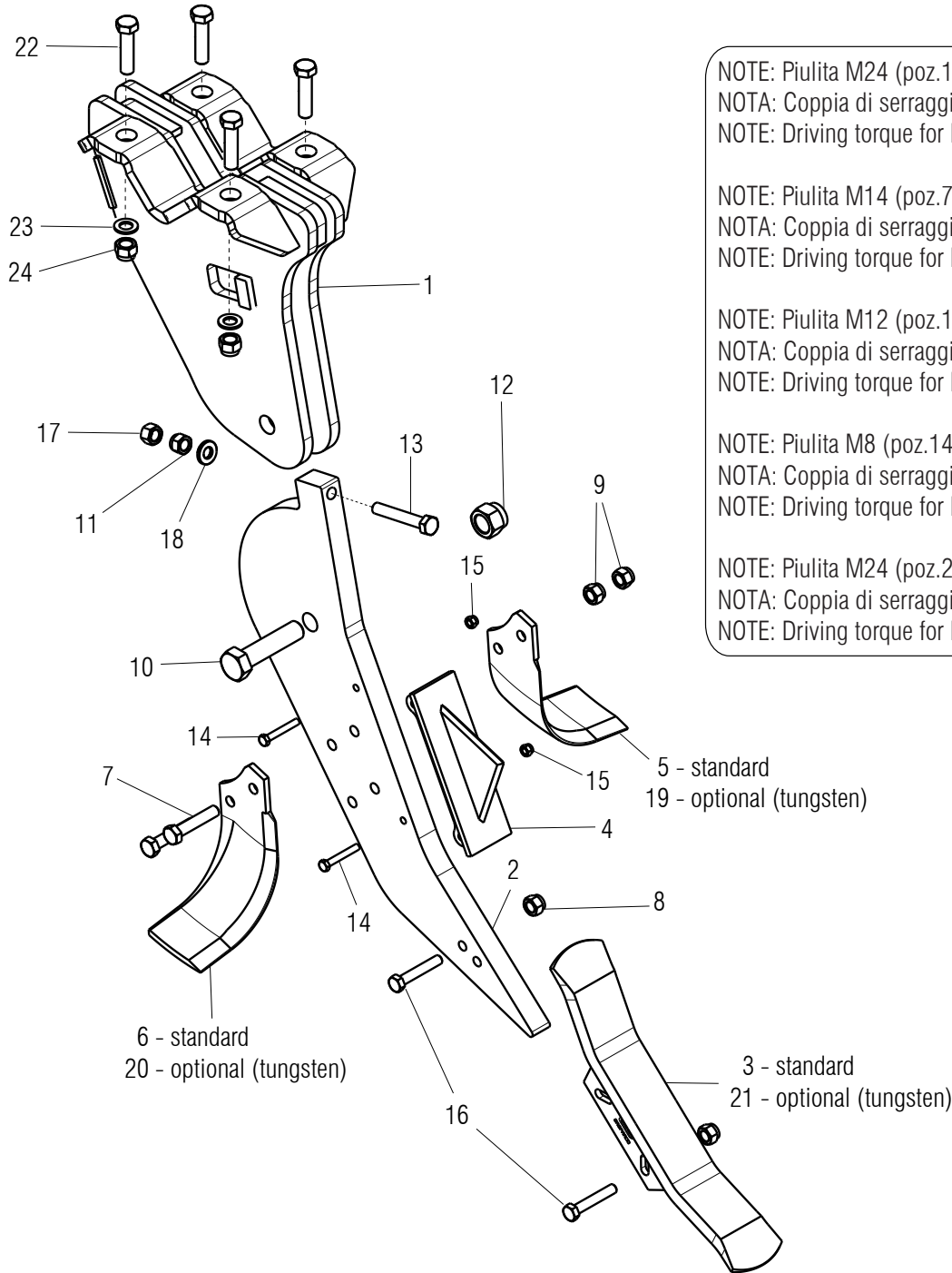
TAV. 010



NOTE: Piulita M24 (poz.11) se va strange pana la 650-700 Nm  
NOTE: Piulita M24 (poz.11) se va strange pana la 650-700 Nm  
NOTE: Piulita M24 (poz.11) se va strange pana la 650-700 Nm  
NOTE: Piulita M24 (poz.11) se va strange pana la 650-700 Nm

| Pos. | Cod.      | Descrizione                    | Description                    | Benennung                     | Description                  | Descripcion                    | Descriere                      |
|------|-----------|--------------------------------|--------------------------------|-------------------------------|------------------------------|--------------------------------|--------------------------------|
| 1    | R17810141 | ASS.TELAIO 2370                | FRAME 2370                     | HALTERUNG 2370                | CHASSIS 2370                 | BASTIDOR 2370                  | ANS.SASIU 2370                 |
| 2    | R17810172 | TELAIO POSTERIORE 2370         | REAR FRAME 2370                | HECKRAHMEN 2370               | CHASSIS ARRIERE 2370         | BASTIDOR POSTERIOR 2370        | SASIU POSTERIOR 2370           |
| 3    | R17813752 | ASSIEME SUPPORTIO TELAIO       | FRAME SUPPORT LEFT             | RAHMENHALTERUNG LINK          | SUPPORT CHASSIS GAUCHE       | SOPORTE BASTIDOR IZQUIERDA     | SUPORT SASIU SX                |
| 4    | R17813743 | ASSIEME TELAIO CENTRALE ATTILA | FRAME SUPPORT RIGHT            | RAHMENHALTERUNG RECHT         | SUPPORT CHASSIS DROIT        | SOPORTE BASTIDOR DERECHA       | SUPORT SASIU DX                |
| 5    | R17843890 | ASSIEME 3P                     | 3P ASSEMBLY                    | 3P ZUSAMMENBAU                | ASSEMBLEE 3P                 | ASAMBLEA 3P                    | ASAMBLU 3P                     |
| 6    | R17813783 | SUPPORTO TELAIO                | FRAME SUPPORT                  | RAHMENHALTERUNG               | SUPPORT CHASSIS              | SOPORTE BASTIDOR               | SUPPORT SASIU                  |
| 7    | R17810950 | LAMELA SUPORT VALVA            | SUPPORT BLADE VALVE            | HALTERUNG MESSER VENTIL       | SUPPORT LAME VALVE           | CUCHILLA SOPORTE VALVULA       | LAMA SUPORT VALVA              |
| 8    | F20100101 | PERNO D32 L128 C43 ZN          | FRAME SUPPORT                  | RAHMENHALTERUNG               | SUPPORT CHASSIS              | SOPORTE BASTIDOR               | SIPORT SASIU                   |
| 9    | F01020164 | DADO M24 X3 D982 10 ZN         | NUT M24X 3 D982 10 ZN          | MUTTER M24X 3 D982 10 ZN      | ECROU M24X 3 D982 10 ZN      | TUERCA M24X 3 D982 10 ZN       | PIULITA M24X 3 D982 10 ZN      |
| 10   | R17821590 | CAVALLOTTO                     | BRACKET PIPE 100               | ANSCHLAG ROHR 100             | BRIDE TUBE 100               | EL.DE EMPALME TUBO 100         | BRIDA TUB 100                  |
| 11   | F01020369 | VIT.M24X 3X 90 U5737 10.9 ZB   | BOLT M24X 3X 90 U5737 10.9ZB   | SCHR. M24X 3X 90 U5737 10.9ZB | VIS M24X 3X 90 U5737 10.9ZB  | TORN.M24X 3X 90 U5737 10.9ZB   | SURUB M24X 3X 90 U5737 10.9ZB  |
| 12   | G18701590 | RONDELLA 25X35X2,5 ZN          | WASHER 25 X35 X2,5 ZN          | SCHEIBE 25 X35 X2,5 ZN        | RONDELLE 25 X35 X2,5 ZN      | ARANDELA 25 X35 X2,5 ZN        | SAIBA 25X 35X 2,5 ZN           |
| 13   | F01230146 | DADO M24X 3 D982 10 ZN         | NUT M24X 3 D982 10 ZN          | MUTTER M24X 3 D982 10 ZN      | ECROU M24X 3 D982 10 ZN      | TUERCA M24X 3 D982 10 ZN       | PIULITA M24X 3 D982 10 ZN      |
| 14   | G16740160 | SCONTRO A U SP.8 2F15 84       | FLANGE U SHIMS 8 2F15 84       | U-ANSCHLAG DICKE 8 2F15 84    | BUTEE EN U CALE 8 2F15 84    | ELEM. DE EMPAL.U ESP.8 2F15 84 | BRIDA U GR.8 2F15 84           |
| 15   | F01020174 | VITE M12X1,75X120 5737 8.8 ZN  | SCREW M12X1,75X120 5737 8.8 ZN | SCHR.M12X1,75X120 5737 8.8 ZN | VIS M12X1,75X120 5737 8.8 ZN | TORN.M12X1,75X120 5737 8.8 ZN  | SURUB M12X1,75X120 5737 8.8 ZN |
| 16   | F01020160 | VITE M12X1,75X60 5737 8.8 ZN   | BOLT M12X1,75X60 5737 8.8 ZN   | SCHRA.M12X1,75X60 5737 8.8 ZN | VIS M12X1,75X60 5737 8.8 ZN  | TORN. M12X1,75X60 5737 8.8 ZN  | SURUB M12X1,75X 60 5737 8.8 ZN |
| 17   | F01230059 | DADO M12X1,75 D982 8 ZN        | NUT M12X1,75 D982 8 ZN         | MUTTER M12X1,75 D982 8 ZN     | ECROU M12X1,75 D982 8 ZN     | TUERCA M12X1,75 D982 8 ZN      | PIULITA M12X1,75 D982 8 ZN     |
| 18   | F20100141 | PERNO D36 L128 C43 ZN          | PIN D36 L128 C43 ZN            | BOLTZEN D36 L128 C43 ZN       | BOULON D36 L128 C43 ZN       | PERNO D36 L128 C43 ZN          | BOLT D36 L128 C43 ZN           |
| 19   | R17810461 | ASSIEME TELAIO ANTERIORE L2920 | FRAME FRONT L2920              | VORDERRAHMEN L2920            | CHASSIS AVANT L2920          | BASTIDOR DELANTERO L2920       | ANSAMBLU SASIU ANTERIOR L2920  |
| 20   | R17810482 | TELAIO POSTERIORE 2920         | REAR FRAME 2920                | HECKRAHMEN 2920               | CHASSIS ARRIERE 2920         | BASTIDOR POSTERIOR 2920        | SASIU POSTERIOR 2920           |
| 21   | R17810380 | ASS.PUNTELLO                   | PROP                           | STUTZE                        | ETRESILLON                   | PUNTAL                         | PICIOR                         |
| 22   | R17815722 | SUPPORTO CARPENTERIA           | ASSEMBLY SUPPORT               | HALTERUNG ZUSAMMENBAU         | ASSEMBLE SUPPORT             | ASAMBLEA SUPPORTO              | ANSAMBLU SUPORT                |
| 23   | R17810441 | PERNO D20 L110 ZN              | BOLT D20 L110 ZN               | BOLZEN D20 L110 ZN            | BOULON D20 L110 ZN           | PERNO D20 L110 ZN              | BOLT D20 L110 ZN               |
| 24   | F02200507 | SPINAA SCATTO D 9 B/83         | SNAP PIN D9 B/83 ZN            | EINRASTSTIFT D9 B/83 ZN       | FICHE A DETENTE D9 B/83 ZN   | CLAVIJA DE MUELLE D9 B/83 ZN   | STIFT RESORT D9 B/83 ZN        |

TAV. 020



NOTE: Piulita M24 (poz.10) se va strange pana la 350-400 Nm  
 NOTA: Coppia di serraggio per le viti M24 (pos.10) = 350-400 Nm  
 NOTE: Driving torque for bolts M24 (pos.10) = 350-400 Nm

NOTE: Piulita M14 (poz.7,13) se va strange pana la 130-140 Nm  
 NOTA: Coppia di serraggio per le viti M14 (pos.7,13) = 130-140 Nm  
 NOTE: Driving torque for bolts M14 (pos.7,13) = 130-140 Nm

NOTE: Piulita M12 (poz.16) se va strange pana la 85-95 Nm  
 NOTA: Coppia di serraggio per le viti M12 (pos.16) = 85-95 Nm  
 NOTE: Driving torque for bolts M12 (pos.16) = 85-95 Nm

NOTE: Piulita M8 (poz.14) se va strange pana la 25-30 Nm  
 NOTA: Coppia di serraggio per le viti M8 (pos.14) = 25-30 Nm  
 NOTE: Driving torque for bolts M8 (pos.14) = 25-30 Nm

NOTE: Piulita M24 (poz.22) se va strange pana la 650-700 Nm  
 NOTA: Coppia di serraggio per le viti M24 (pos.22) = 650-700 Nm  
 NOTE: Driving torque for bolts M24 (pos.22) = 650-700 Nm

5 - standard  
 19 - optional (tungsten)

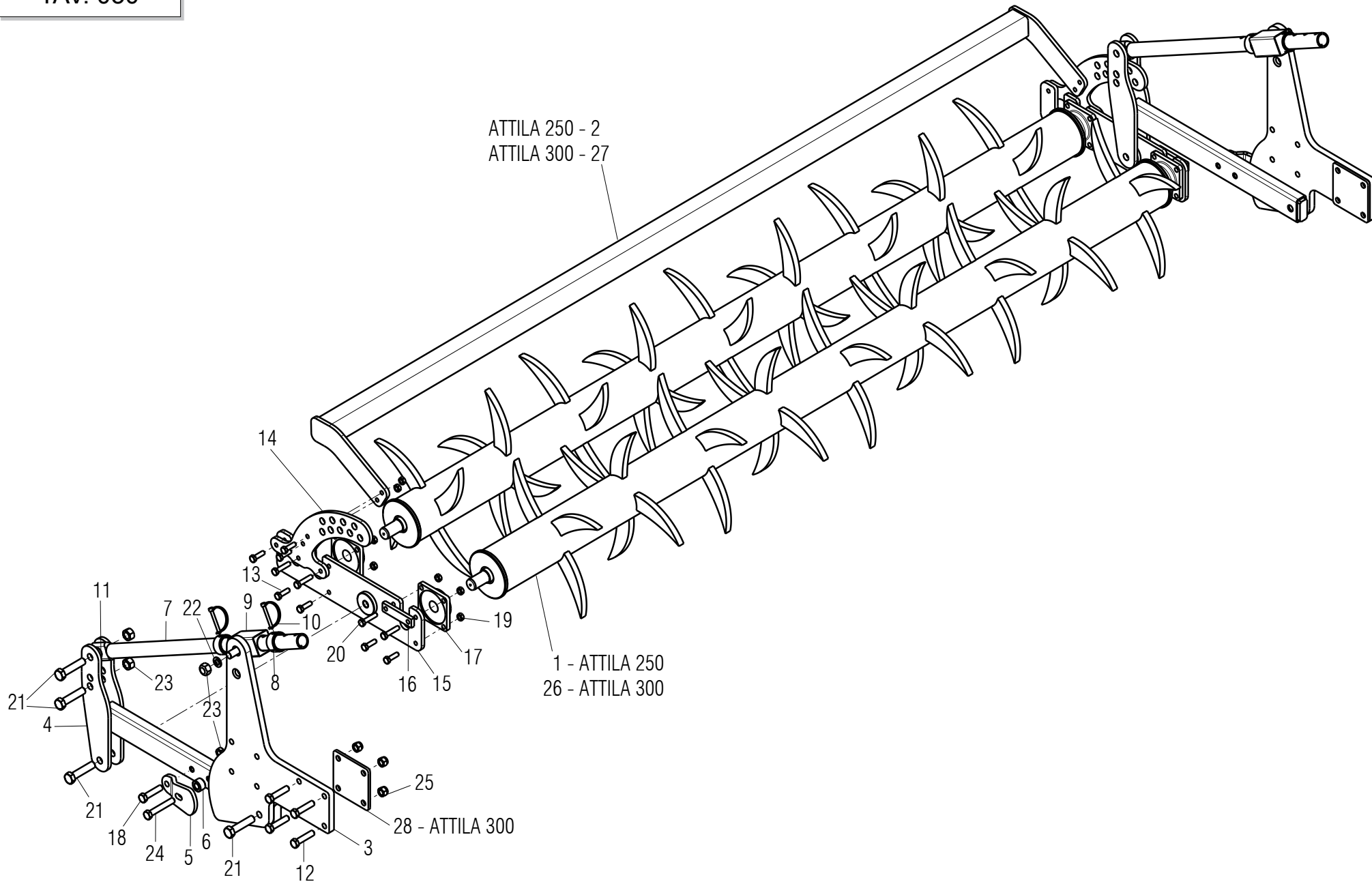
6 - standard  
 20 - optional (tungsten)

3 - standard  
 21 - optional (tungsten)

**ELEMENTO OPERATORE / OPERATOR ELEMENT / BETREIBER ELEMENTE / ELEMENT OPERATEUR / ELEMENTO OPERADORE / ELEMENT OPERATOR**

TAV. 020

| Pos. | Cod.      | Descrizione                   | Description                    | Benennung                      | Description                    | Descrpcion                     | Descriere                      |
|------|-----------|-------------------------------|--------------------------------|--------------------------------|--------------------------------|--------------------------------|--------------------------------|
| 1    | R17820541 | ASS. SUPPORTO ANCORA          | SUPPORT TIP                    | SPITZE HALTERUNG               | SUPPORT EMBOUT                 | SOPORTE PUNTAL                 | SUPPORT VARF                   |
| 2    | R17820561 | LAMA DI PROTEZIONE            | TIP                            | STUTZE                         | EMBOUT                         | PUNTAL                         | VARF                           |
| 3    | R17820681 | DENTE ATTILA PINOCCHIO        | TOOTH ATT/PIN REVERS. 2 HOLES  | ZAHN                           | DENT                           | DIENTE                         | DINTE                          |
| 4    | R17820411 | LAME ROMPIZOLLE               | CLOD-BREAKING BLADE            | MESSER SCHOLLENBRECHER         | LAME BRISE-MOTTES              | CUCHILLA DESTERRONADOR         | LAMA SPARGATOR BRAZDA          |
| 5    | M74100435 | ZAPPA EL DX "B" SP.10         | HELICOIDAL BLADE 10 MM RIGHT   | RECHT BOGENMESSER              | LAME HELICE DROIT              | AZADA HELICE DERECHA           | SAPA ELICOIDALA DX             |
| 6    | M74100436 | ZAPPA EL SX "B" SP.10         | HELICOIDAL BLADE 10 MM LEFT    | LINK BOGENMESSER               | LAME HELICE GAUCHE             | AZADA HELICE IZQUIERDA         | SAPA ELICOIDALA SX             |
| 7    | F01020207 | VITE M14X2X70 U5737 8.8 ZN    | BOLT M14X2X70 U5737 8.8 ZN     | SCHRAUBE M14X2X70 U5737 8.8 ZN | VIS M14X2X70 U5737 8.8 ZN      | TORNILLO M14X2X70 U5737 8.8 ZN | SURUB M14X 2X 70 U5737 8.8 ZN  |
| 8    | F01230059 | DADO M12X1,75 D982 8 ZN       | NUT M12X1,75 D982 8 ZN         | MUTTER M12X1,75 D982 8 ZN      | ECROU M12X1,75 D982 8 ZN       | TUERCA M12X1,75 D982 8 ZN      | PIULITA M12X1,75 D982 8 ZN     |
| 9    | F01230073 | DADO M14X 2 D982 8 ZN         | SELF LOCK. NUT M14X2 D982 8 ZN | SELBSTSP.MUTT. M14X2 D982 8 ZN | ECROU AUTOBL. M14X2 D982 8 ZN  | TUERCA AUTOBL. M14X2 D982 8 ZN | PIULITA AUT. M14X2 D982 8 ZN   |
| 10   | F01020344 | VITE M24X3X100 U5737 10.9 ZD  | BOLT M24X3X100 U5737 10.9 ZN   | MUTTER M14 D6923 8.8 ZN        | VIS M24X3X100 U5737 10.9 ZN    | TUERCA M14 D6923 8.8 ZN        | SURUB M24X100 U5737 10.9 ZN    |
| 11   | F01260046 | DADO FLANG.M14 D6923 8 ZN     | NUT M14 D6923 8.8 ZN           | MUTTER FLANG.M14 D6923 8 ZN    | ECROU BRIDE M14 D6923 8 ZN     | TUERCA FLANG.M14 D6923 8 ZN    | PIULITA FLANG.M14 D6923 8 ZN   |
| 12   | F01230144 | DADO M24X 3 D982 8 ZN         | NUT M24X 3 D982 8 ZN           | MUTTER M24X 3 D982 8 ZN        | ECROU M24X 3 D982 8 ZN         | TUERCA M24X 3 D982 8 ZN        | PIULITA M24X 3 D982 8 ZN       |
| 13   | F01020214 | VITE M14X 2X100 U5737 8.8 ZN  | BOLT 14X100 5737 8.G GALVANIZ. | SCHRAUBE 14X100 5737 8.G ZN    | VIS 14X100 5737 8.G ZN         | TORNILLO 14X100 5737 8.G ZN    | SURUB M14X 2X100 U5737 8.8 ZB  |
| 14   | F01020077 | VITE M 8X1,25X60 U5737 8.8 ZN | BOLT M8X1,25X60 U5737 8.8 ZN   | SCHRA. M8X1,25X60 U5737 8.8 ZN | VIS M8X1,25X60 U5737 8.8 ZN    | TORN. M8X1,25X60 U5737 8.8 ZN  | SURUB M8X1,25X60 U5737 8.8 ZN  |
| 15   | F01230034 | DADO M 8X1,25 D982 8          | SELF LOCK.NUT M8X1,25 D982 8ZN | SELBST.MUTT.M8X1,25 D982 8 ZN  | ECROU AUTOBL.M8X1,25 D982 8 ZN | TUERCA AUTO. M8X1,25 D982 8 ZN | PIULITA AUT. M8X1,25 D982 8 ZN |
| 16   | F01020164 | VITE M12X1,75X70 U5737 8.8 ZN | BOLT M12X1,75X70 U5737 8.8 ZN  | SCHR. M12X1,75X70 U5737 8.8 ZN | VIS M12X1,75X70 U5737 8.8 ZN   | TORN. M12X1,75X70 U5737 8.8 ZN | SURUB M12X1,75X70 U5737 8.8 ZN |
| 17   | F01200306 | DADO M14X 2 U5588 6.8 ZN      | NUT M14X2                      | MUTTER M14X2                   | ECROU M14X2                    | TUERCA M14X2                   | PIULITA M14X2 5588 6S ZN       |
| 18   | R18700280 | RONDELLA D.14 D.30 SP.4       | WASHER D.14 D.30 SP.4          | SCHEIBE D.14 D.30 SP.4         | RONDELLE D.14 D.30 SP.4        | ARANDELA D.14 D.30 SP.4        | SAIBA D.14 D.30 GR.4           |
| 19   | R17820860 | ZAPPA EL DX "B" SP.10 TUNG    | RIGHT HEL.BLADE THIKN.10 TUNG. | RECHT BOGENMESS.DICKE 10 TUNG. | LAME HELICE DROIT ÉP.10 TUNG.  | AZADA HEL.DERECHA ESP.10 TUNG. | SAPA ELICOIDALA DX SP.10 TUNGS |
| 20   | R17820870 | ZAPPA EL SX "B" SP.10 TUNG    | LEFT HEL.BLADE THIKN.10 TUNG.  | LINK BOGENMESS.DICKE 10 TUNG.  | LAME HELICE GAUCHE ÉP.10 TUNG. | AZADA HEL.IZQUIER.ESP.10 TUNG. | SAPA ELICOIDALA SX SP.10 TUNGS |
| 21   | R17820731 | DENTE TUNGSTENO ATTILA-PINOC. | TOOTH TG ATTILA-PINOCCHIO      | ZAHN TG ATTILA-PINOCCHIO       | DENT TG ATTILA-PINOCCHIO       | DIENTE TG ATTILA-PINOCCHIO     | DINTE TG ATTILA-PINOCCHIO      |
| 22   | F01020369 | VIT.M24X 3X 90 U5737 10.9 ZB  | BOLT M24X 3X 90 U5737 10.9ZB   | SCHR. M24X 3X 90 U5737 10.9ZB  | VIS M24X 3X 90 U5737 10.9ZB    | TORN.M24X 3X 90 U5737 10.9ZB   | SURUB M24X 3X 90 U5737 10.9ZB  |
| 23   | G18701590 | RONDELLA 25X35X2,5 ZN         | WASHER 25 X35 X2,5 ZN          | SCHEIBE 25 X35 X2,5 ZN         | RONDELLE 25 X35 X2,5 ZN        | ARANDELA 25 X35 X2,5 ZN        | SAIBA 25X 35X 2,5 ZN           |
| 24   | F01230146 | DADO M24X 3 D982 10 ZN        | NUT M24X 3 D982 10 ZN          | MUTTER M24X 3 D982 10 ZN       | ECROU M24X 3 D982 10 ZN        | TUERCA M24X 3 D982 10 ZN       | PIULITA M24X 3 D982 10 ZN      |

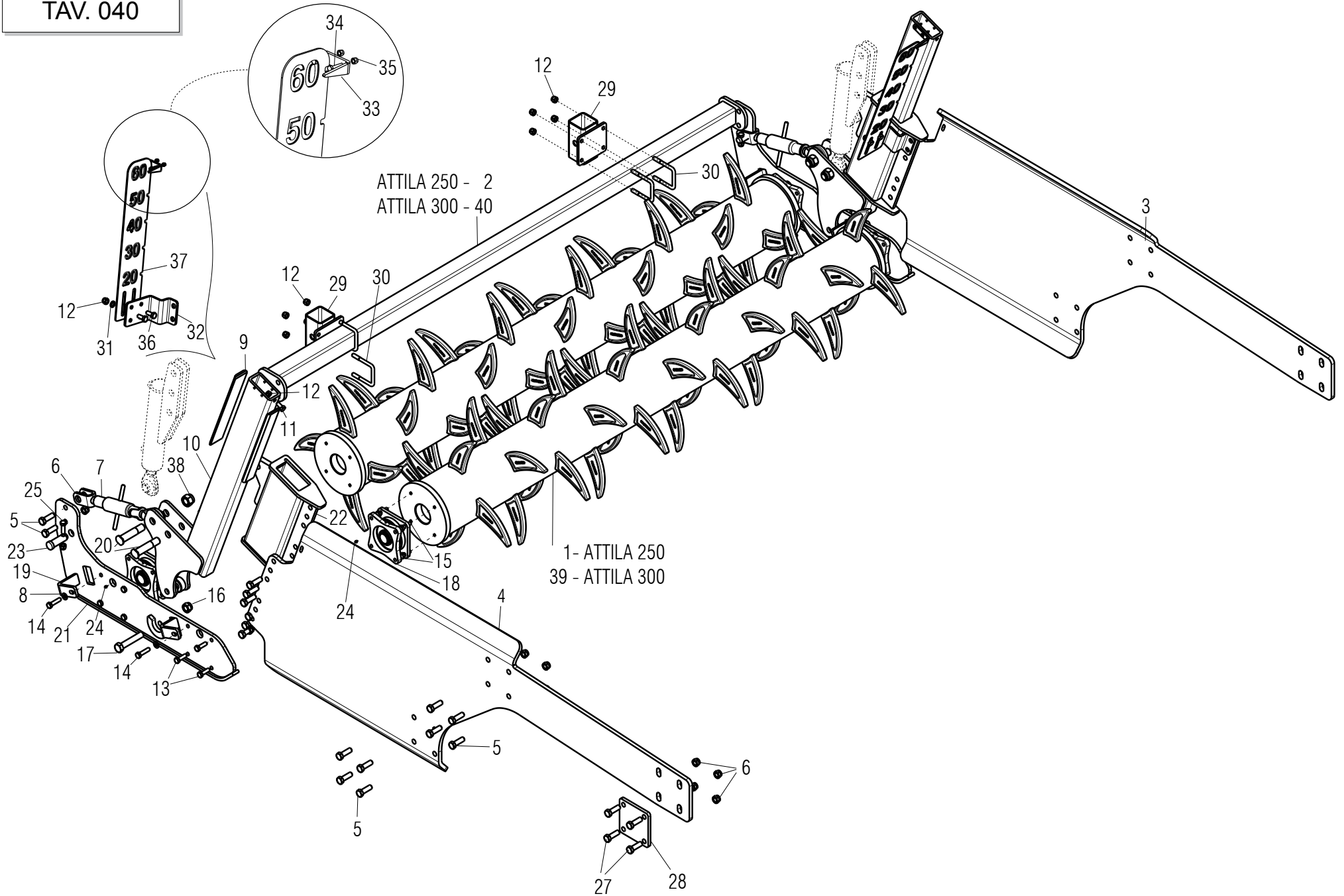




**DOPPIO RULLO POSTERIORE MECCANICO / MECHANICAL DOUBLE REAR ROLLER / MECHANISCHE DOPPELTE NINTERE  
WALZE / DOUBLE ROULEAU POSTERIEUR MECANIQUE / DOBLE RODILLO POSTERIOR MECANICO / RULOU DUBLU  
POSTERIOR MECANIC**

TAV. 030

| Pos. | Cod.      | Descrizione                    | Description                    | Benennung                       | Description                   | Descrpcion                      | Descriere                       |
|------|-----------|--------------------------------|--------------------------------|---------------------------------|-------------------------------|---------------------------------|---------------------------------|
| 1    | R17813361 | ASS.RULLO 2,5 32 DENTI         | ROLLER 2,5 32 TEETH            | ROLLE 2,5 32 ZAHN               | ROULEAU 2,5 32 DENTS          | RODILLO 2,5 32 DIENTES          | ANS.RULOU 2,5 32 DINTI          |
| 2    | R17813380 | SUPPORTO PROTEZIONE            | SUPPORT GUARD                  | SCHUTZ                          | SUPPORT PROTECTION            | SOPORTE PROTECCION              | ANSAMBLU SUPORT PROTECTIE       |
| 3    | R17815180 | STAFFA SUPPORTO RULLO          | ROLLER SUPPORT PLATE           | ROLLE HALTERUNG PLATTE          | PLAQUE SOPORTE ROULEAU        | PLACA SOPORTE RODILLO           | PLACA SUPORT RULOU              |
| 4    | R17813140 | ASS.SUPPORTO RULLO             | ROLLER SUPPORT                 | ROLLE HALTRUNG                  | SUPPORT ROULEAU               | SOPORTE RODILLO                 | ANS.SUPPORT RULOU               |
| 5    | R17813130 | PIATTO DI SUPPORTO             | SUPPORT PLATE                  | HALTERUNGPLATTE                 | PLAQUE DE SUPPORT             | PLACA DE SOPORTE                | PLACA DE SUPORT                 |
| 6    | R17813230 | BOCCOLA DISTANZIALE            | BUSHING                        | BUCHSE                          | BUSHING                       | CASQUILLO                       | BUCSA DISTANTATOARE             |
| 7    | R17811910 | TUBO REGOLAZIONE               | ADJUSTMENT PIPE                | ROHR EINSTELLUNG                | TUBE REGLAGE                  | TUBO REGULACIN                  | TUB REGLAJ                      |
| 8    | R17811960 | BOCCOLA PER REGOLAZIONE ZN     | BUSHING ADJUSTMENT ZN          | EINSTELLBsCHSE ZN               | BOITE REGLAGE ZN              | CASQUILLO REGULACIN ZN          | BUCSA PENTRU REGLARE ZN         |
| 9    | R17811950 | TUBO REGOLAZIONE ZN            | ADJUSTMENT TUBE ZN             | ROHR EINSTELLUNG ZN             | TUBE REGLAGE ZN               | TUBO REGULACIN ZN               | ANSAMBLU TUB REGLARE ZN         |
| 10   | F02200562 | SPINA SICUR. D. 8X70 ZN        | SNAP PIN D.8X 70 ZN            | SCHERSTIFT D.8X 70 ZN           | FICHE EL. D.8X70 ZN           | CLAVIJA D.8X 70 ZN              | STIFT RESORT D.8X70 ZN          |
| 11   | R17812000 | BOCCOLA 21,7X33,7X23 ZN        | BUSHING 21,7X33,7X23 ZN        | BUCHSE 21,7X33,7X23 ZN          | BUSHING 21,7X33,7X23 ZN       | CASQUILLO 21,7X33,7X23 ZN       | BUCSA 21,7X33,7X23 ZN           |
| 12   | F01020260 | VITE M16X2X70 U5737 8.8 ZN     | BOLT M16X2X70 U5737 8.8 ZN     | SCHRAUBE M16X2X70 U5737 8.8 ZN  | VIS M16X2X70 U5737 8.8 ZN     | TORNILLO M16X2X70 U5737 8.8 ZN  | SURUB M16X2X70 U5739 8.8 ZN     |
| 13   | F01020152 | VITE M12X1,75X40 5737 8.8 ZN   | BOLT M12X1,75X40 U5737 8.8 ZN  | SCHR.M12X1,75X 40 U5737 8.8 ZN  | VIS M12X1,75X 40 U5737 8.8 ZN | TORN.M12X1,75X 40 U5737 8.8 ZN  | SURUB M12X1,75X40 U5737 8.8 ZN  |
| 14   | R17813120 | LAMA DI REGOLAZIONE            | BLADE ADJUSTMENT               | HALTERUNG MESSER                | LAME REGLAGE                  | CUCHILLA SOPORTE                | LAMA DE REGLARE                 |
| 15   | R17813110 | ASS.SUPPORTO RULLO             | ROLLER SUPPORT                 | ROLLE HALTERUNG                 | SOPORTE ROULEAU               | SOPORTE RODILO                  | ANS.SUPPORT RULOU               |
| 16   | R17813240 | PIASTRA DI ATTACCO             | FIXING PLATE                   | KUPPLUNGSPLATTE                 | PLAQUE DE RACCORD             | PLACA DE CONEXIN                | PLACA DE POZITONARE             |
| 17   | F04100073 | SUPPORTO CUSCINETTO FY35TF     | BEARING SUPPORT FY35TF         | LAGERHALTERUNG FY35TF           | SUPPORT ROULEMENT FY35TF      | SOPORTE COJINETE FY35TF         | SUPPORT RULMENT FY35TF          |
| 18   | F01020262 | VITE M16X2X80 U5737 8.8 ZN     | BOLT M16X2X80 U5737 8.8 ZN     | SCHRAUBE M16X2X80 U5737 8.8 ZN  | VIS M16X2X80 U5737 8.8 ZN     | TORNILLO M16X2X80 U5737 8.8 ZN  | SURUB M16X 2X 80 U5737 8.8 ZN   |
| 19   | F01230059 | DADO M12X1,75 D982 8 ZN        | NUT M12X1,75 D982 8 ZN         | MUTTER M12X1,75 D982 8 ZN       | ECROU M12X1,75 D982 8 ZN      | TUERCA M12X1,75 D982 8 ZN       | PIULITA M12X1,75 D982 8 ZN      |
| 20   | F01020160 | VITE M12X1,75X60 U5737 8.8 ZN  | BOLT M12X1,75X60 U5737 8.8 ZN  | SCHRA.M12X1,75X60 U5737 8.8 ZN  | VIS M12X1,75X60 U5737 8.8 ZN  | TORN. M12X1,75X60 U5737 8.8 ZN  | SURUB M12X1,75X 60 5737 8.8 ZN  |
| 21   | F01020325 | VITE M20X2,5X 90 U5737 10.9 ZD | BOLT M20X2,5X 90 U5737 10.9 ZD | SCHRA.M20X2,5X 90 U5737 10.9 ZD | VIS M20X2,5X 90 U5737 10.9 ZD | TORN. M20X2,5X 90 U5737 10.9 ZD | SURUB M20X2,5X 90 U5737 10.9 ZD |
| 22   | F01410124 | ROS.M20 21X 37X 3 U6592 ZN     | WASHER M20 21X37X3 U6592 ZN    | SCHIBE M20 21X37X3 U6592 ZN     | RONDELLE M20 21X37X3 U6592 ZN | ARANDELA M20 21X37X3 U6592 ZN   | SAIBA M20 21X37X3 U6592 ZN      |
| 23   | F01230131 | DADO M20X 2,5 D982 6 ZN        | NUT M20X 2,5 D982 6 ZN         | MUTTER M20X 2,5 D982 6 ZN       | ECROU M20X 2,5 D982 6 ZN      | TUERCA M20X 2,5 D982 6 ZN       | PIULITA M20X 2,5 D982 6 ZN      |
| 24   | F01020285 | VITE M16X2X100 U5737 8.8 ZN    | BOLT M16X2X100 U5737 8.8 ZN    | SCHRA.M16X2X100 U5737 8.8 ZN    | VIS M16X2X100 U5737 8.8 ZN    | TORN.M16X2X100 U5737 8.8 ZN     | SURUB M16X2X100 U5737 8.8 ZN    |
| 25   | F01230085 | DADO M16X 2 D982 8 ZN          | NUT M16X 2 D982 8 ZN           | MUTTER M16X 2 D982 8 ZN         | ECROU M16X 2 D982 8 ZN        | TUERCA M16X 2 D982 8 ZN         | PIULITA M16X 2 D982 8 ZN        |
| 26   | R17813371 | ASS.RULLO 3 36 DENTI           | ROLLER 3 36 TEETH              | ROLLE 3 36 ZAHN                 | ROULEAU 3 36 DENTS            | RODILLO 3 36 DIENTES            | ANS.RULOU 3 36 DINTI            |
| 27   | R17813391 | SUPPORTO PROTEZIONE            | SUPPORT GUARD                  | SCHUTZ                          | SUPPORT PROTECTION            | SOPORTE PROTECCION              | ANSAMBLU SUPORT PROTECTIE       |
| 28   | R17812620 | PIATTO                         | PLATE                          | PLATTE                          | PLAQUE                        | PLACA                           | PLACA                           |

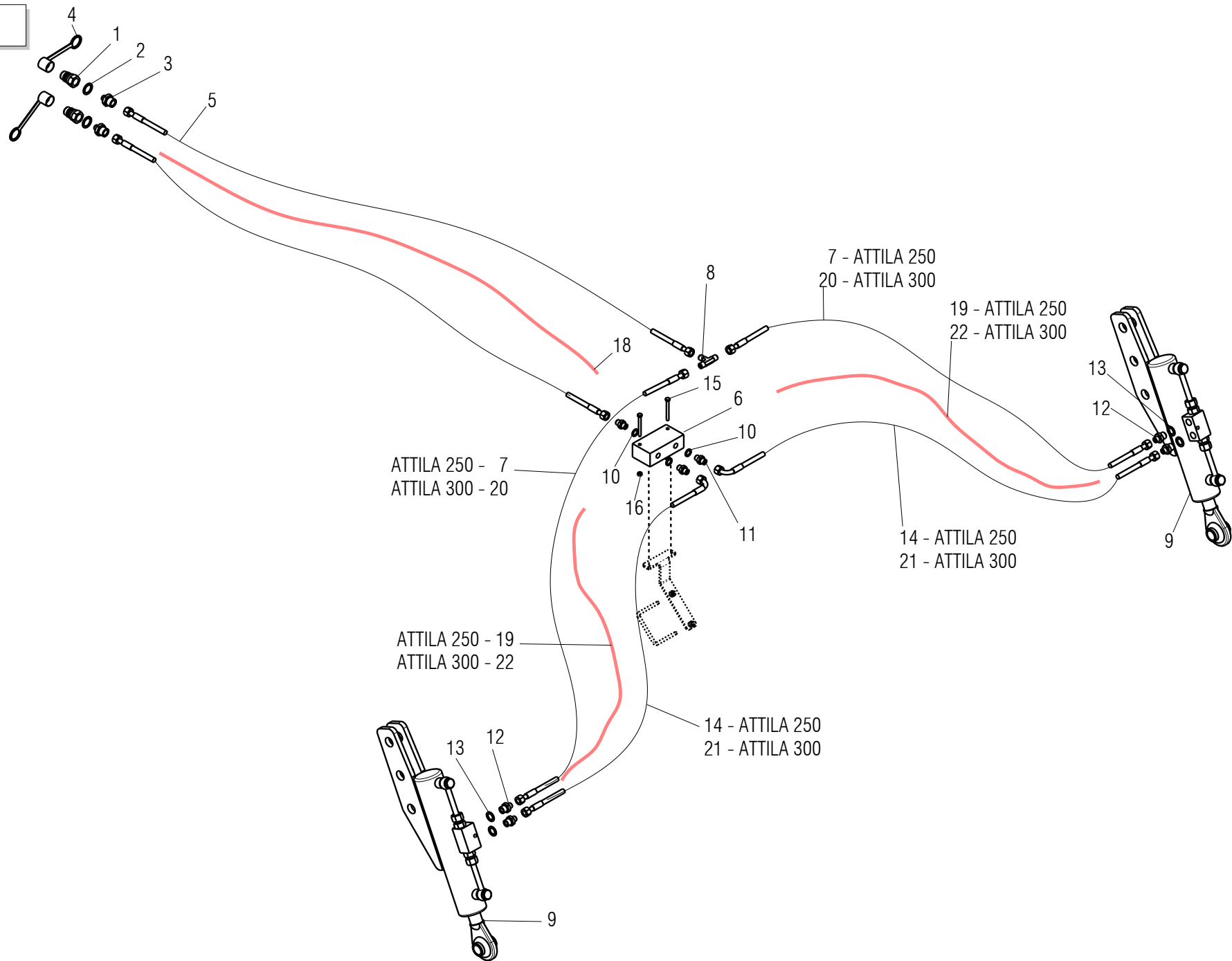


**DOPPIO RULLO POSTERIORE OLEODINAMICO / HYDRAULICAL DOUBLE REAR ROLLER / HYDRAULISCHEN DOPPELTE HINTERE WALZE / DOUBLE ROULEAU POSTERIEUR HYDRAULIQUE / DOBLE RODILLO POSTERIOR HIDRAULICO / RULO DUBLU POSTERIOR OLEODINAMIC**

TAV. 040

| Pos. | Cod.      | Descrizione                    | Description                    | Benennung                      | Description                   | Descrpcion                        | Descriere                      |
|------|-----------|--------------------------------|--------------------------------|--------------------------------|-------------------------------|-----------------------------------|--------------------------------|
| 1    | R17811192 | RULLO L=2,5 44 DENTI           | ROLLER L=2,5 44 TEETH          | WALTZE L=2,5 44 ZAHN           | ROULEAU L=2,5 44 DENTS        | RODILLO L=2,5 44 DIENTES          | RULO L=2,5 44 DINTI            |
| 2    | R17811432 | ASSIEME PROTEZIONE 2,5M        | ASSEMBLY GUARD 2,5M            | ZUSAMMENBAU SCHUTZ 2,5M        | ASSEMBLEE PROTECTION 2,5M     | ASAMBLEA PROTECCION 2,5M          | ANSAMBLU PROTECTIE 2,5M        |
| 3    | R17815763 | FIANCATA SUPPORTO RULLO SX     | SUPPORT BLADE ADJUSTMENT SX    | SUPPORT LAME REGLAGE SX        | MESSER HALTERUNG ANPASSUNG SX | CUCHILLA SOPORTE AJUSTE SX        | LAMA SUPORT REGLARE SX         |
| 4    | R17815753 | FIANCATA SUPPORTO RULLO DX     | SUPPORT BLADE ADJUSTMENT DX    | SUPPORT LAME REGLAGE DX        | MESSER HALTERUNG ANP DX       | CUCHILLA SOPORTE AJUSTE DX        | LAMA SUPORT REGLARE DX         |
| 5    | F01020252 | VITE M16X2X50 U5737 8 8 ZN     | BOLT M16X 2X 50 U5737 8 8 ZN   | SCHRAUBE M16X2X50 U5737 8.8 ZN | VIS M16X 2X 50 U5737 8.8 ZN   | TORNILLO M16X2X50 U5737 8.8 ZN    | SURUB M16X 2X 50 U5737 8.8 ZN  |
| 6    | F01230085 | DADO M16X 2 D982 8 ZN          | NUT M16X 2 D982 8 ZN           | MUTTER M16X 2 D982 8 ZN        | ECROU M16X 2 D982 8 ZN        | TUERCA M16X 2 D982 8 ZN           | PIULITA M16X 2 D982 8 ZN       |
| 7    | F02450022 | MART*M.L= 330 L= 490 D=25,4 ZD | TIE-ROD L=330 L=490 D=24.4 ZN  | ZUGSTANGE L=330 L=490 D25,4 ZN | TRINGLE L=330 L=490 D=25,4 ZN | TIRANTE L=330 L=490 D=25,4 ZN     | TIRANT L=330 L=490 D=24.4 ZN   |
| 8    | F01410076 | ROS.M12 13X 24X2,5 U6592 ZN    | WASHER D12 U6592 ZN            | SCHLEIBE D12 U6592 ZN          | RONDELLE D12 U6592 ZN         | ARANDELA D12 U6592 ZN             | SAIBA D12 U6592 ZN             |
| 9    | R17811331 | LAMA DI SCORRIMENTO            | BLADE SLIDING                  | GLEITMESSER                    | LAME DE GLISSEMENT            | CUCHILLAS DE DESPLAZAMIENTO       | PLACA DE GLISARE               |
| 10   | R17610171 | LEVA SCORRIMENTO RULLI         | ROLLER SLIDING BLADE           | LAME DE GLISSEMENT             | GLEITMESSER                   | CUCHILLAS                         | PLACA                          |
| 11   | F01020508 | VITE M12X1,75X25 U5739 8.8 ZN  | BOLT M12X1,75X25 U5739 8.8 ZN  | SCHR. M12X1,75X25 U5739 8.8 ZN | VIS M12X1,75X25 U5739 8.8 ZN  | TORN. M12X1,75X25 U5739 8.8 ZN    | SURUB M12X1,75X25 U5739 8.8 ZN |
| 12   | F01230059 | DADO M12X1,75 D982 8 ZN        | NUT M12X1,75 D982 8 ZN         | MUTTER M12X1,75 D982 8 ZN      | ECROU M12X1,75 D982 8 ZN      | TUERCA M12X1,75 D982 8 ZN         | PIULITA M12X1,75 D982 8 ZN     |
| 13   | F01010288 | VITE M12X1,25X35 U5740 8.8 ZN  | BOLT M12X1,25X35 U5740 8.8 ZN  | SCHR.M12X1,25X35 U5740 8.8 ZN  | VIS M12X1,25X35 U5740 8.8 ZN  | TORN.M12X1,25X35 U5740 8.8 ZN     | SURUB M12X1,25X35 U5740 8.8 ZN |
| 14   | F01010292 | VITE M12X1,25X45 U5740 8.8 ZN  | BOLT M12X1,25X45 U5740 8.8 ZN  | SCHRA.M12X1,25X45 U5740 8.8 ZN | VIS M12X1,25X45 U5740 8.8 ZN  | TORN. M12X1,25X45 U5740 8.8 ZN    | SURUB M12X1,25X45 U5740 8.8 ZN |
| 15   | F01020528 | VITE M12X1,75X40 U5739 10.9 ZN | BOLT M12X1,75X40 U5739 10.9ZN  | SCHR.M12X1,75X40 U5739 10.9 ZN | VIS M12X1,75X40 U5739 10.9 ZN | TORN.M12X1,75X40 U5739 10.9 ZN    | SURUB M12X1,75X40 U5739 10.9ZN |
| 16   | F01230131 | DADO M20X 2,5 D982 6 ZN        | NUT M20X 2,5 D982 6 ZN         | MUTTER M20X 2,5 D982 6 ZN      | ECROU M20X 2,5 D982 6 ZN      | TUERCA M20X 2,5 D982 6 ZN         | PIULITA M20X 2,5 D982 6 ZN     |
| 17   | R17614350 | PERNO FILET. D20 L110 C40 ZN   | BOLT FILET. D20 L110 C40 ZN    | BOLZEN FILET.D20 L110 C40 ZN   | VIS FILET. D20 L110 C40 ZN    | TORNILLO D20 L110 C40 ZN          | BOLT CU FILET D20 L110 C40 ZN  |
| 18   | M43400413 | KIT SUPPORTO RULLO OSCILL.H=60 | BEARING H=60                   | LAGER H=60                     | PALIER H=60                   | COJINETE H=60                     | RULMENT OSCILANT H=60          |
| 19   | R17811450 | RASCHIATERRA                   | SOIL SCRAPER                   | ERDSCHABER                     | RACLEUR                       | RASCADOR DE TIERRA                | RAZUITOARE                     |
| 20   | R17614340 | PERNO FILET. D25 L118 C40 ZN   | BOLT FILET. D25 L118 C40 ZN    | BOLZEN FILET. D25 L118 C40 ZN  | VIS FILET. D25 L118 C40 ZN    | TORNILLO D25 L118 C40 ZN          | BOLT FILET. D25 L118 C40 ZN    |
| 21   | R17610160 | SUPPORTO RULLO                 | ROLLER SUPPORT                 | ROLLER HALTERUNG               | ROULEAU SUPPORT               | RODILLO SOPORTE                   | SUPORT RULO                    |
| 22   | R17811321 | SUPPORTO SCORRIMENTO RULLI     | ROLLER SLIDING SUPPORT         | RUOLEAU SUPPORT                | ROLLER HALTERUNG              | RODILLO SOPORTE                   | SUPORT RULO                    |
| 23   | R17817910 | SPINA D25 L55,5 ZN             | BOLT D25 L55,5 ZN              | BOLZEN D25 L55,5 ZN            | BOULON D25 L55,5 ZN           | TORNILLO D25 L55,5 ZN             | BOLT D25 L55,5 ZN              |
| 24   | F01100011 | ING.M 6X1 7663-A 9SMNPB28 ZN   | GREASE NIPPLE M6X1 7663-A ZN   | SCHMIERBUECHE M6X1 7663-A ZN   | GRAISS. A BILLE M6X1 7663A ZN | ENGRAS. DE ESFERAS M6X1 7663-A    | CAP GRESOR M6X1 DREPT A/1 ZN   |
| 25   | F01020154 | VITE M12X1,75X45 U5737 8.8 ZN  | BOLT M12X1,75X45 U5737 8.8 ZN  | SCHR.M12X1,75X 45 U5737 8.8 ZN | VIS M12X1,75X 45 U5737 8.8 ZN | TORN.M12X1,75X 45 U5737 8.8 ZN    | SURUB M12X1,75X45 U5737 8.8 ZN |
| 26   | M43400705 | GUARNIZIONE METALLICA H60      | GASKET H60                     | DICHTUNG H60                   | JONT H60                      | JUNTA H60                         | GARNITURA METALICA H60         |
| 27   | F01020256 | VITE M16X2X60 U5737 8.8 ZN     | BOLT M16X2X60 U5737 8.8 ZN     | SCHRAUBE M16X2X60 U5737 8.8 ZN | VIS M16X 2X60 U5737 8.8 ZN    | TORNILLO M16X2X60 U5737 8.8 ZN    | SURUB M16X 2X60 U5737 8.8 ZN   |
| 28   | R17810160 | SCONTRO 145X145-12 4F17 105    | FLANGE 145X145-12 4F17 105     | ANSCHLAG 145X145-12 4F17 105   | BUTEE 145X145-12 4F17 105     | EL.DE EMPALME 145X145-12 4F17 105 | BRIDA 145X145-12 4F17 105      |
| 29   | R17843580 | ASSIEME SUPPORTO               | ASSEMBLY SUPPORT               | HALTERUNG ZUSAMMENBAU          | ASSEMBLEE SUPPORT             | ASAMBLEA SUPPORTO                 | ANSAMBLU SUPORT                |
| 30   | F20110745 | CAV.Q.B=70 M=12X1,75L=96       | U-BOLT M12 X PIPE 70X70        | BsGELBOLZEN M12 FsR ROHR 70X70 | CAVALIER M12 POUR TUBE 70X70  | PERNO EN U M12 X TUBO 70X70       | BRIDA "U" M12 PT TUB 70X70 ZN  |
| 31   | F01480055 | ROS.G 12,2X 18X2,5 D7980 ZN    | GROWER REINF. WASHER D12       | VERST. FEDERSCHLEIBE D12       | RONDELLE GROWER RENF.D12      | ARANDELA GROWER RINF.D12          | SAIBA G. 12.2X18X2,5 D7980 ZN  |
| 32   | R17843540 | PIASTRA SUPPORTO               | BLADE SUPPORT                  | MESSER HALTERUNG               | LAMA SUPPORT                  | CUCHILLA SOPORTE                  | PLACA SUPORT                   |
| 33   | R17843520 | INDICATORE SCALA               | LEVEL INDICATOR                | ANZEIGESKALA                   | ECHELLE DE L'INDICATEUR       | INDICADOR DE ESCALA               | INDICATOR SCALA                |
| 34   | F01020409 | VITE M 6X 1X 30 U5739* 8.8 BR  | SCREW M6X 1X30 U5739 8.8 BR    | SCHRAUBE 6 X30 5739 8.G        | VIS 6 X30 5739 8.G            | TORNILLO 6 X30 5739 8.G           | SURUB M6X 1X30 U5739 8.8 BR    |
| 35   | F01230022 | DADO M 6X 1 D982 8 ZN          | NORM.SELF-LOCKING NUT 6 GALVAN | SELBSTSTP. MUTTER NOR.6 ZN     | ECROU AUTOB.NOR.6 ZN          | TUERCA AUTOB. NOR. 6 ZN           | PIULITA AUTOB. NOR.6 ZN        |
| 36   | F01020511 | VITE M12 X30 U5739             | SCREW M12 X30 U5739            | VIS M12 X30 U5739              | SCHRAUBE M12 X30 U5739        | TORNILLO M12 X30 U5739            | SURUB M12 X30 U5739            |
| 37   | R17843500 | SCLALA RULLO                   | LEVEL ROLLER                   | SKALA ROLLER                   | ECHELLE ROULEU                | ESCALA RODILLO                    | SCALA RULO                     |
| 38   | F01230144 | DADO M24X 3 D982 8 ZN          | NUT M24X 3 D982 8 ZN           | MUTTER M24X 3 D982 8 ZN        | ECROU M24X 3 D982 8 ZN        | TUERCA M24X 3 D982 8 ZN           | PIULITA M24X 3 D982 8 ZN       |
| 39   | R17811204 | ROTOR RULO 56 DINTI 3M         | ROLLER L=3 56 TEETH            | WALTZE L=3 56 ZAHN             | ROULEAU L=3 56 DENTS          | RODILLO L=3 56 DIENTES            | RULO L=3 56 DINTI              |
| 40   | R17811614 | ASSIEME PROTEZIONE 3M          | ASSEMBLY GUARD 3M              | ZUSAMMENBAU SCHUTZ 3M          | ASSEMBLEE PROTECTION 3M       | ASAMBLEA PROTECCION 3M            | ANSAMBLU PROTECTIE 3M          |

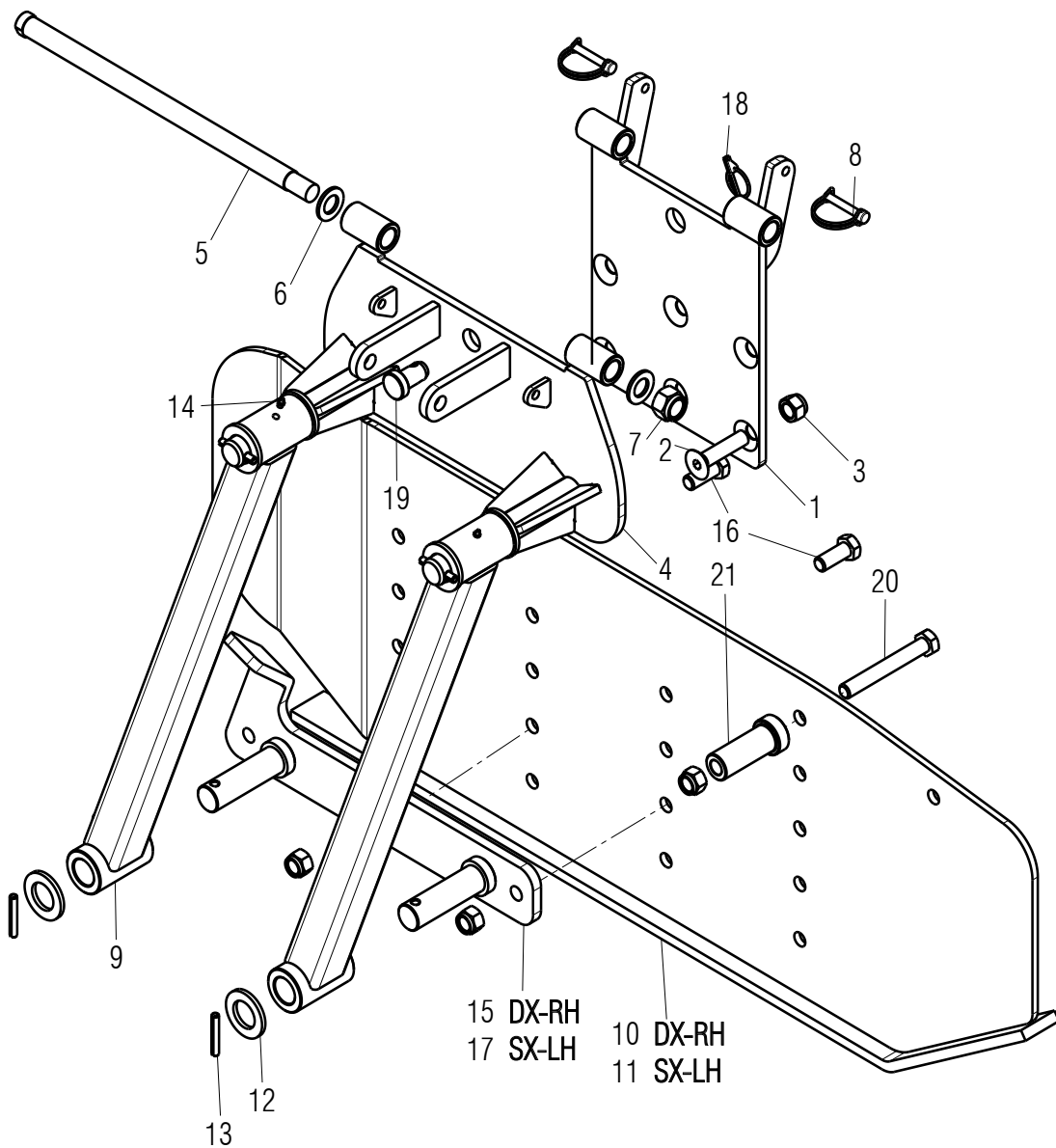
TAV. 050



**IMPIANTO OLEODINAMICO / HYDRAULIC PLANT / HYDRAULISCHEN ANZUG / INSTALLATION HYDRAULIQUE / INSTALACION  
HIDRAULICA / INSTALAȚIE OLEODINAMICĂ**

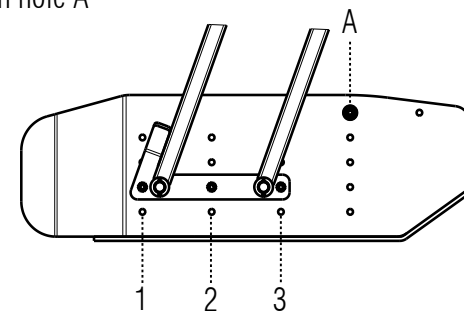
**TAV. 050**

| Pos. | Cod.      | Descrizione                    | Description                    | Benennung                      | Description                     | Descrpcion                     | Descriere                      |
|------|-----------|--------------------------------|--------------------------------|--------------------------------|---------------------------------|--------------------------------|--------------------------------|
| 1    | F03150935 | INNESTO RAP.MASCH.1/2 A VALV.  | QUICK CONNECT MALE CONE 1/2    | SCHNELLKUPP.GEWINDE KONISC 1/2 | CONNEXION RAPIDE MALE CONE 1/2  | ACOPLAMIENT.RAP.MACHO CONO 1/2 | CUPLA RAPIDA TATA 1/2 VALVA    |
| 2    | F03151237 | ROS. 21 X27X1,5 RAME -1/2"     | COPPER WASHER 21X27X1,5 1/2    | SCHEIBE KUPFER 21X27X1,5 1/2   | RONDELLE CUIVRE 21X27X1,5 1/2   | ARANDELA COBRE 21X27X1,5 1/2   | SAIBA PLANA 21X27X1,5 1/2      |
| 3    | F03150211 | NIPPLO MM CIL-CIL 1/2-1/4 ZN   | NIPLE MM CIL-CIL 1/4-1/2 ZN    | NIPLE GG 1/4-1/2 ZN            | NIPLE MM 1/4-1/2 ZN             | NIPLE MM 1/4-1/2 ZN            | NIPLU MM CIL-CIL 1/4-1/2 ZN    |
| 4    | F05150325 | CAPPUC.F X INN.M RAP.1/2 ROSSO | COVER CONNECT F 1/2 RED        | DECKEL W 1/2 SCHNELLKUPP. ROT  | COUVERCLE CONNEXION F 1/2 ROSE  | PAC PROTECCION F 1/2 ROJO      | CAPAC PROTECTIE F 1/2 ROSU     |
| 5    | R17817920 | TUB 1/4 FF L=2000              | TR 2SN 1/4" FD1/4 FD1/4 2000   | TR 2SN 1/4" FD1/4 FD1/4 2000   | TR 2SN 1/4" FD1/4 FD1/4 2000    | TR 2SN 1/4" FD1/4 FD1/4 2000   | TR 2SN 1/4" FD1/4 FD1/4 2000   |
| 6    | F03151044 | DIVISORE DI FLUSSO A 2 VIE     | FLOW DIVISOR                   | OELVERTEILER                   | DIVISEUR DE FLUX                | DIVISOR DE FLUJO               | FLUXUL DIVIDER                 |
| 7    | G17915100 | TUBO 1/4 F-F L.2800            | PIPE 1/4 F-F L.2800            | ROHR 1/4 F-F L.2800            | TUBE 1/4 F-F L.2800             | TUBO 1/4 F-F L.2800            | TUB 1/4 F-F L.2800             |
| 8    | F03151219 | RACCORDO -T- MASCHIO 1/4 ZN    | MALE T-UNION 1/4 ZN            | T VERBINDUNG                   | CONNECTION A T                  | JUNTURA A T                    | RACORD -T- TATA 1/4 ZN         |
| 9    | R17811482 | CILINDRO L550 C250 D75 S30 A60 | CYLINDER L550 C250 D75 S30 A60 | ZYLINDER L550 C250 D75 S30 A60 | CYLINDRE L550 C250 D75 S30 A60  | CILINDRO L550 C250 D75 S30 A60 | CILINDRU L550 C250 D75 S30 A60 |
| 10   | F03151238 | ROS. 13 X19X1,5 RAME -1/4"     | COPPER WASHER 13X19X1,5 -1/4"  | SCHEIBE KUPFER 13X19X1,5 -1/4" | RONDELLE CUIVRE 13X19X1,5 -1/4" | ARANDELA COBRE 13X19X1,5 -1/4" | SAIBA PLANA 13X19X1,5 -1/4"    |
| 11   | F03150266 | NIPPLO MM CIL-CIL 1/4-1/4 ZN   | NIPPLE GALV.CYL.MALE 1/4 ZN    | NIPPELZYL.1/4 ZN               | NIPPLE MALE CYL. 1/4 ZN         | NIPLE MACHO CIL.1/4 ZN         | NIPLU MM CIL-CIL 1/4-1/4 ZN    |
| 12   | F03150310 | NIPPLO MM CIL-CIL 3/8-1/4 ZN   | NIPPLE CYL.MALE3/8-1/4 ZN      | NIPPELZYL.3/8-1/4 ZN           | NIPPLE MALE CYL.3/8-1/4 ZN      | NIPLE MACHO CIL.3/8-1/4 ZN     | NIPLU TATA CIL.3/8-1/4 ZN      |
| 13   | F03151240 | ROS. 17 X23X1,5 RAME -3/8"     | COPPER WASHER 17X23X1,5 3/8"   | SCHEIBE KUPFER 17X23X1,5 3/8"  | RONDELLE CUIVRE 17X23X1,5 3/8"  | ARANDELA COBRE 17X23X1,5 3/8"  | SAIBA PLANA 17X23X1,5 3/8"     |
| 14   | G15210551 | TUBO 1/4 CF-F L.2750           | TUBO 1/4 CF-F L.2750           | TUBO 1/4 CF-F L.2750           | TUBO 1/4 CF-F L.2750            | TUBO 1/4 CF-F L.2750           | TUBO 1/4 CF-F L.2750           |
| 15   | F01020416 | VITE M 6X 1X 55 U5739 8.8 ZN   | BOLT M6X 1X 55 U5739 8.8 ZN    | SCHRAUBE 6 X55 5739 8.G ZN     | VIS 6 X55 5739 8.G ZN           | TORNILLO 6X55 5739 8.G ZN      | SURUB M6X 1X 55 U5739 8.8 ZN   |
| 16   | F01220211 | DADO TRISTOP M 6               | NUT- TRISTOP M 6               | MUTTER TRISTOP M 6             | ECROU TRISTOP M 6               | TUERCA TRISTOP M 6             | PIULITA TRISTOP M 6            |
| 17   | F05150058 | FASCETTA POLYAM.7,8X550 31920  | POLYAM.CLAMP 7,8X550 31921     | POLYAM. 7,8X550 31921          | POLYAM. 7,8X550 31921           | POLYAM. 7,8X550 31921          | POLYAM. 7,8X550 31921          |
| 18   | F03100383 | GUAINA TELATA D=65 L=1750      | SHEATH D=65 L=1750             | KABEL D=65 L=1750              | GAINA D=65 L=1750               | VAINA D=65 L=1750              | INVELITOARE PANZA D=65 L=1750  |
| 19   | F03100362 | GUAINA TELATA D=65 L=2350      | SHEATH D=65 L=2350             | KABEL D=65 L=2350              | GAINA D=65 L=2350               | VAINA D=65 L=2350              | INVELITOARE PANZA D=65 L=2350  |
| 20   | R17814480 | TUBO 1/4R2 F1/4- F1/4 L=3000   | TR 2SN 1/4" FD1/4 FD1/4 3000   | TR 2SN 1/4" FD1/4 FD1/4 3000   | TR 2SN 1/4" FD1/4 FD1/4 3000    | TR 2SN 1/4" FD1/4 FD1/4 3000   | TR 2SN 1/4" FD1/4 FD1/4 3000   |
| 21   | G15210631 | TUBO 1/4R2 CF1/4- F1/4 3000    | PIPE 1/4R2 CF1/4- F1/4 3000    | ROHR 1/4R2 CF1/4- F1/4 3000    | TUBE 1/4R2 CF1/4- F1/4 3000     | TUBO 1/4R2 CF1/4- F1/4 3000    | TUB 1/4R2 CF1/4- F1/4 3000     |
| 22   | F03100371 | GUAINA TELATA D=65 L=3000      | SHEATH D=65 L=3000             | GAINA D=65 L=3000              | KABEL D=65 L=3000               | VAINA D=65 L=3000              | INVELITOARE D=65 L=3000        |



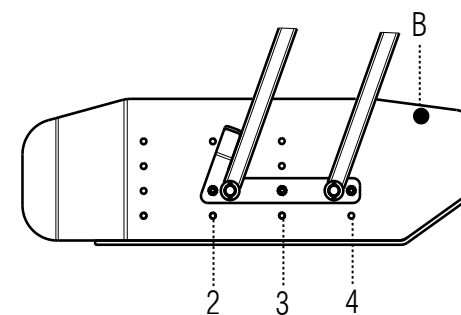
Quando la staffa di regolazione è fissata alle forature 1 - 2 - 3 fissare il finecorsa su foro A

When the adjusting bracket is fixed to the holes of columns 1 - 2 - 3 insert end of stroke pin in hole A



Quando la staffa di regolazione è fissata alle forature 2 - 3 - 4 fissare il finecorsa su foro B

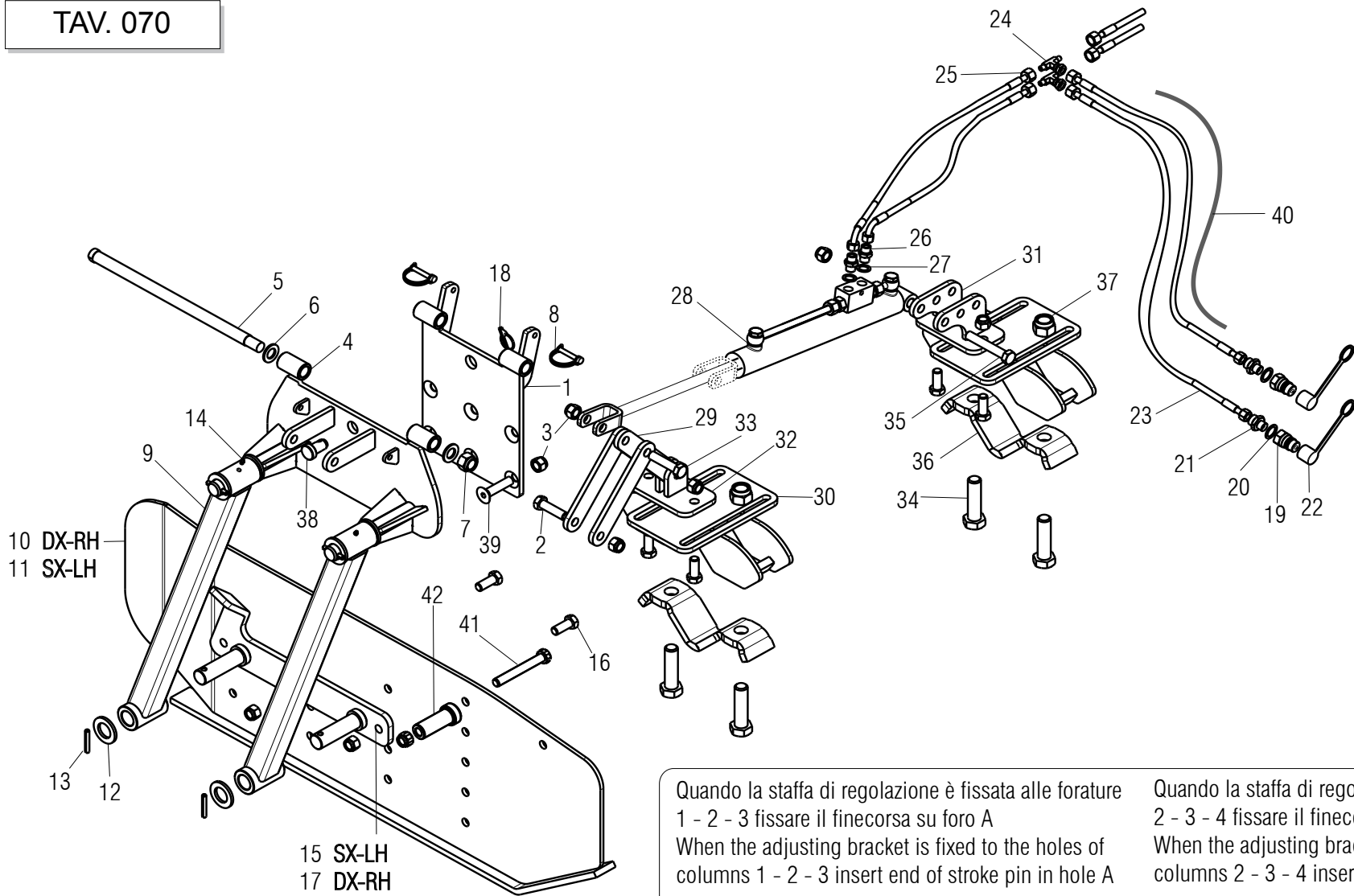
When the adjusting bracket is fixed to the holes of columns 2 - 3 - 4 insert end of stroke pin in hole B



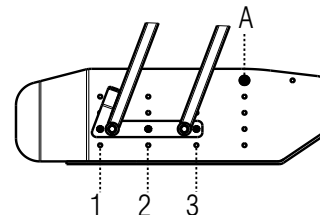
**BANDINELLA LATERALE MECCANICA / MECHANICAL SIDE SHIELD / MECHANISCHE SEITENSCHUTZBLECHS / PROTECION  
LATÉRALE MECANIQUE / BANDAS LATERALES MECANICAS / LIMITATOR LATERAL DE BRAZDĂ MECANIC**

TAV. 060

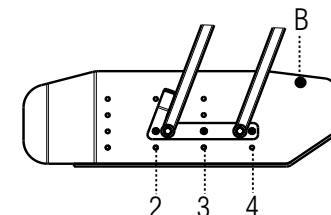
| Pos. | Cod.      | Descrizione                    | Description                   | Benennung                      | Description                    | Descripcion                    | Descriere                      |
|------|-----------|--------------------------------|-------------------------------|--------------------------------|--------------------------------|--------------------------------|--------------------------------|
| 1    | R17811651 | PIASTRA ATTACCO                | COUPLING PLATE                | MESSER HALTERUNG               | LAMA JONCTION                  | CUCHILLA UNIONE                | PLACA PRINDERE                 |
| 2    | F01030152 | VITE M16X 2X70 U5933 10.9 ZD   | BOLT M16X2X70 U5933 8.8 ZN    | SCHRAUBE M16X2X70 U5933 8.8 ZN | VIS M16X2X70 U5933 8.8 ZN      | TORNILLO M16X2X70 U5933 8.8 ZN | SURUB M16X 2X 70 U5933 8.8 ZN  |
| 3    | F01230085 | DADO M16X 2 D982 8 ZN          | NUT M16X 2 D982 8 ZN          | MUTTER M16X 2 D982 8 ZN        | ECROU M16X 2 D982 8 ZN         | TUERCA M16X 2 D982 8 ZN        | PIULITA M16X 2 D982 8 ZN       |
| 4    | R17811712 | ASSIEME RIBALTAMENTO BANDELLE  | OVERALL LIMIT UP              | ZUSAMMENBAU KLIMMZUG BEGR.     | ASSEMBLEE HAUT LIMITER         | ASAMBLEA LLEVARSE LIMITADOR    | ANSAMBLU RIDICARE LIMITATOR    |
| 5    | R17811721 | PERNO FILETATO D22 M20 L422 ZN | BOLT FILET.D22 M20 L422 ZN    | BOLZEN FILET D22 M20 L422 ZN   | VIS FILET.D22 M20 L422 ZN      | TORNILLO D22 M20 L422 ZN       | BOLT FILETAT D22 M20 L422 ZN   |
| 6    | F01410135 | ROS.M22 23X 39X 3 U6592 ZN     | WASHER M22 23X39X3 U6592 ZN   | SCHEIBE M22 23X39X3 U6592 ZN   | RONDELLE M22 23X39X3 U6592 ZN  | ARANDELA M22 23X39X3 U6592 ZN  | SAIBA M22 23X39X3 U6592 ZN     |
| 7    | F01220092 | DADO M20X 2,5 D980 8 ZN        | NUT M20X 2,5 D980 8 ZN        | MUTTER M20X 2,5 D980 8 ZN      | ECROU M20X 2,5 D980 8 ZN       | TUERCA M20X 2,5 D980 8 ZN      | PIULITA M20X 2,5 D980 8 ZN     |
| 8    | F02100312 | SPINA DI SICUREZZA D.8X45 ZN   | SAFETY PIN D.8X45 ZN          | SCHERSTIFT D.8X45 ZN           | FICHE EL.DE SECURITE D.8X45 ZN | CLAVIJA DE SEGURIDAD D 8X45 ZN | STIFT RESORT SIGUR. D.8X45 ZN  |
| 9    | R17613671 | ASSIEME LEVA BANDINELLE        | OVERALL LIMIT SUPPORT         | ZUSAMMENBAU KLIMMZUG BEGR.     | ASSEMBLEE HAUT LIMITER         | ASAMBLEA LLEVARSE LIMITADOR    | ANSAMBLU SUSTINERE LIMITATOR   |
| 10   | R17613360 | ASSIEME LIMITATORE DX          | FRAME LEVEL PLATE RH          | HALTERUNG EBEN RICHT           | ASSEMBLEE NIVEAU DX            | ASAMBLEA NIVELADOR DX          | ANSAMBLU LIMITATOR DX          |
| 11   | R17613350 | ASSIEME LIMITATORE SX          | FRAME LEVEL PLATE LH          | HALTERUNG EBEN LINK            | ASSEMBLEE NIVEAU SX            | ASAMBLEA NIVELADOR SX          | ANSAMBLU LIMITATOR SX          |
| 12   | G20970067 | RONDELLA 54X5X32               | WASHER 54X5X32                | UNTERLEGSCHIEBE 54X5X32        | RONDELLE 54X5X32               | ARANDELA 54X5X32               | SAIBA 54X5X32                  |
| 13   | F02100144 | SPINA E.P. 8X 50 U6873 C70 BR  | ELASTIC PIN 8X50              | SPANNSTIFT D8 L50 D1481 C70BR  | FICHE EL. D8 L50 D1481 C70 BR  | CLAVIJA D8 L50 D1481 C70 BR    | STIFT E.D. D8 L50 D1481 C70 BR |
| 14   | F01100048 | ING.M 8X1,25 7663A 9SMNPB28 ZN | GREASE NIPPLE M8X1,25 U7663A  | SCHMIERBUECHSE M8X1,25 7663A   | GRAISSEUR A BILLES M8X1,25     | ENGRAS. DE ESFERAS M8 X 1,25 A | GRESOR SFERIC M8X1,25 7663A    |
| 15   | R17614140 | ATTACCO SUPPORTO LIMITATORE SX | COUPL. LEVEL PLATE SUPPORT LH | HALTERUNG ANSCHLUSS EBEN LINK  | SUPPORT COUPLE NIVEAU SX       | ASAMBLEA UNION NIVELADOR SX    | SUPORT PRINDERE LIMITATOR SX   |
| 16   | F01020252 | VITE M16X2X50 U5737 8 8 ZN     | BOLT M16X 2X 50 U5737 8.8 ZN  | SCHRAUBE M16X2X50 U5737 8.8 ZN | VIS M16X 2X 50 U5737 8.8 ZN    | TORNILLO M16X2X50 U5737 8.8 ZN | SURUB M16X 2X 50 U5737 8.8 ZN  |
| 17   | R17614120 | ATTACCO SUPPORTO LIMITATORE DX | COUPL. LEVEL PLATE SUPPORT RH | HALTERUNG ANSCHLUSS EBEN RH    | SUPPORT COUPLE NIVEAU DX       | ASAMBLEA UNION NIVELADOR DX    | SUPORT PRINDERE LIMITATOR DX   |
| 18   | F02200463 | SPINA SCATTO D. 5 B/81 ZN      | SNAP PIN D5 B/81 ZN           | EINRASTSTIFT D5 B/81 ZN        | FICHE A DETENTE D5 B/81 ZN     | CLAVIJA DE MUELLE D5 B/81 ZN   | STIFT RESORT D5 B/81 ZN        |
| 19   | R17615130 | SPINA D20 L=25 C40 ZN          | BOLT D20 L=25 C40 ZN          | BOLZEN D20 L=25 C40 ZN         | BOULON D20 L=25 C40 ZN         | PERNO D20 L=25 C40 ZN          | BOLT D20 L=25 C40 ZN           |
| 20   | F01020266 | VITE M16X2X120 U5737 8.8 ZN    | BOLT M16X 2X120 U5737 8.8 ZN  | SCHR.M16X 2X120 U5737 8.8 ZN   | VIS M16X 2X120 U5737 8.8 ZN    | TORN.M16X 2X120 U5737 8.8 ZN   | SURUB M16X 2X120 U5737 8.8 ZN  |
| 21   | R17640640 | BOCCOLA D40 D30 D16,5 L9       | BUSH D40 D30 D16,5 L90 ZN     | BUCHSE D40 D30 D16,5 L90 ZN    | BUSHING D40 D30 D16,5 L90 ZN   | CASQUILLO D40 D30 D16,5 L90 ZN | BUCSA D40 D30 D16,5 L90 ZN     |



Quando la staffa di regolazione è fissata alle forature 1 - 2 - 3 fissare il finecorsa su foro A  
When the adjusting bracket is fixed to the holes of columns 1 - 2 - 3 insert end of stroke pin in hole A



Quando la staffa di regolazione è fissata alle forature 2 - 3 - 4 fissare il finecorsa su foro B  
When the adjusting bracket is fixed to the holes of columns 2 - 3 - 4 insert end of stroke pin in hole B

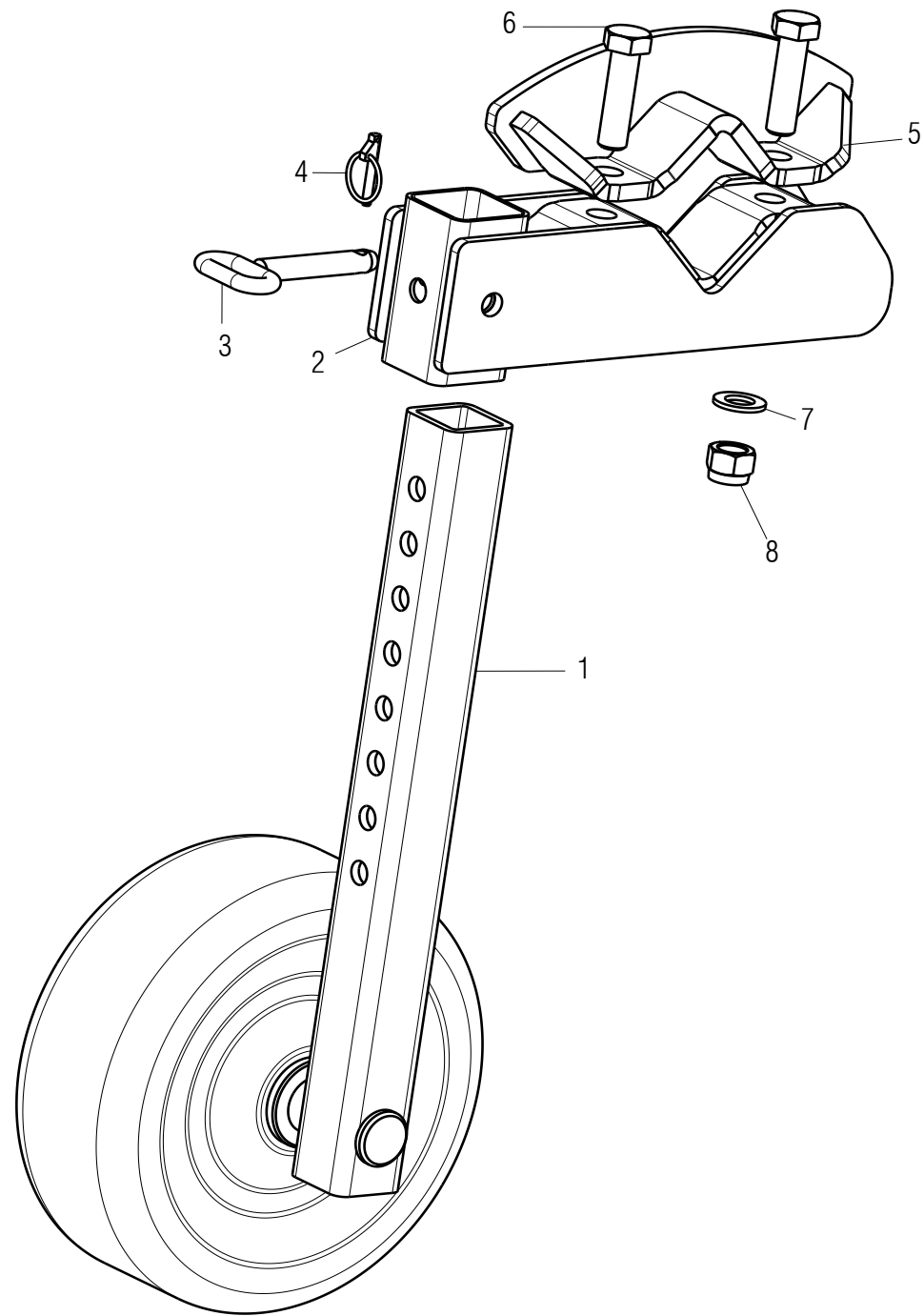




**BANDINELLA LATERALE IDROPNEUMATICA / HYDROPNEUMATIC SIDE SHIELD / HYDROPNEUMATISCHE SEITENSCHUTZBLECHS / PROTECION LATÉRALE HYDROPNEUMATIQUE / BANDAS LATERALES HIDRONEUMÁTICAS / LIMITATOR DE BRAZDĀ**

**TAV. 070**

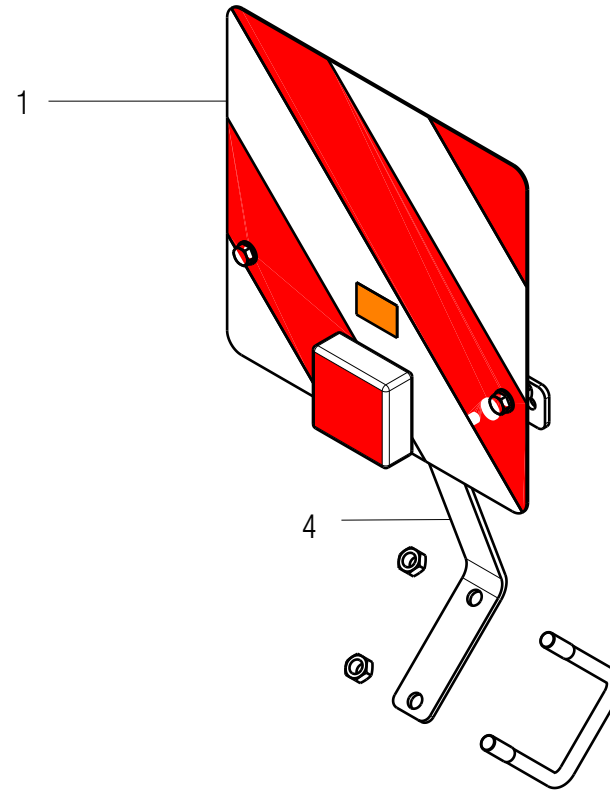
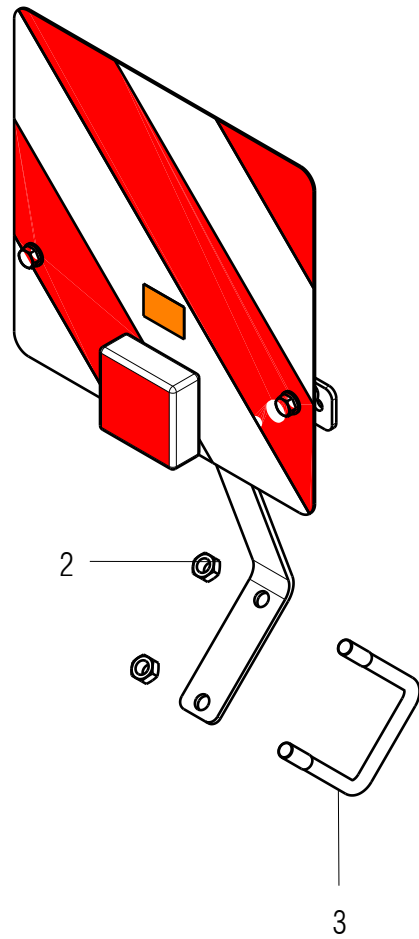
| Pos. | Cod.      | Descrizione                    | Description                    | Benennung                       | Description                    | Descrpcion                     | Descriere                      |
|------|-----------|--------------------------------|--------------------------------|---------------------------------|--------------------------------|--------------------------------|--------------------------------|
| 1    | R17811651 | PIASTRA ATTACCO                | COUPLING PLATE                 | MESSER HALTERUNG                | LAMA JONCTION                  | CUCHILLA UNIONE                | PLACA PRINDERE                 |
| 2    | F01020256 | VITE M16X2X60 U5737 8.8 ZN     | BOLT M16X2X60 U5737 8.8 ZN     | SCHRAUBE M16X2X60 U5737 8.8 ZN  | VIS M16X 2X60 U5737 8.8 ZN     | TORNILLO M16X2X60 U5737 8.8 ZN | SURUB M16X 2X60 U5737 8.8 ZN   |
| 3    | F01230085 | DADO M16X 2 D982 8 ZN          | NUT M16X 2 D982 8 ZN           | MUTTER M16X 2 D982 8 ZN         | ECROU M16X 2 D982 8 ZN         | TUERCA M16X 2 D982 8 ZN        | PIULITA M16X 2 D982 8 ZN       |
| 4    | R17811711 | RIBALTAMENTO BANDELLE          | ASSEMBLY LIFTING BLOCK         | HALTERUNG                       | SUPPORT                        | SOPORTE                        | ANSAMBLU RIDICARE LIMITATOR    |
| 5    | R17811721 | PERNO FILETATO D22 M20 L422 ZN | BOLT FILET.D22 M20 L422 ZN     | BOLZEN FILET D22 M20 L422 ZN    | VIS FILET.D22 M20 L422 ZN      | TORNILLO D22 M20 L422 ZN       | BOLT FILETAT D22 M20 L422 ZN   |
| 6    | F01410135 | ROS.M22 23X 39X 3 U6592 ZN     | WASHER M22 23X39X3 U6592 ZN    | SCHEIBE M22 23X39X3 U6592 ZN    | RONDELLE M22 23X39X3 U6592 ZN  | ARANDELA M22 23X39X3 U6592 ZN  | SAIBA M22 23X39X3 U6592 ZN     |
| 7    | F01220092 | DADO M20X 2,5 D980 8 ZN        | NUT M20X 2,5 D980 8 ZN         | MUTTER M20X 2,5 D980 8 ZN       | ECROU M20X 2,5 D980 8 ZN       | TUERCA M20X 2,5 D980 8 ZN      | PIULITA M20X 2,5 D980 8 ZN     |
| 8    | F02100312 | SPINA DI SICUREZZA D.8X45 ZN   | SAFETY PIN D.8X45 ZN           | SCHERSTIFT D.8X45 ZN            | FICHE EL.DE SECURITE D.8X45 ZN | CLAVIJA DE SEGURIDAD D.8X45 ZN | STIFT RESORT SIGUR. D.8X45 ZN  |
| 9    | R17613671 | ASSIEME LEVA BANDINELLE        | OVERALL LIMIT SUPPORT          | ZUSAMMENBAU KLIMMZUG BEGR.      | ASSEMBLEE HAUT LIMITER         | ASAMBLEA LLEVARSE LIMITADOR    | ANSAMBLU SUSTINERE LIMITATOR   |
| 10   | R17613360 | ASSIEME LIMITATORE DX          | FRAME LEVEL PLATE RH           | HALTERUNG EBEN RICHT            | ASSEMBLEE NIVEAU DX            | ASAMBLEA NIVELADOR DX          | ANSAMBLU LIMITATOR DX          |
| 11   | R17613350 | ASSIEME LIMITATORE SX          | FRAME LEVEL PLATE LH           | HALTERUNG EBEN LINK             | ASSEMBLEE NIVEAU SX            | ASAMBLEA NIVELADOR SX          | ANSAMBLU LIMITATOR SX          |
| 12   | G20970067 | RONDELLA 54X5X32               | WASHER 54X5X32                 | UNTERLEGSCHLEIBE 54X5X32        | RONDELLE 54X5X32               | ARANDELA 54X5X32               | SAIBA 54X5X32                  |
| 13   | F02100144 | SPINA E.P. 8X 50 U6873 C70 BR  | ELASTIC PIN 8X50               | SPANNSTIFT D8 L50 D1481 C70BR   | FICHE EL. D8 L50 D1481 C70 BR  | CLAVIJA D8 L50 D1481 C70 BR    | STIFT E.D. D8 L50 D1481 C70 BR |
| 14   | F01100048 | ING.M 8X1,25 7663A 9SMNPB28 ZN | GREASE NIPPLE M8X1,25 U7663A   | SCHMIERBUCHSE M8X1,25 7663A     | GRAISSEUR A BILLES M8X1,25     | ENGRAS. DE ESFERAS M8 X 1,25 A | GRESOR SFERIC M8X1,25 7663A    |
| 15   | R17614140 | ATTACCO SUPPORTO LIMITATORE SX | COUPL. LEVEL PLATE SUPPORT LH  | HALTERUNG ANSCHLUSS EBEN LINK   | SUPPORT COUPLE NIVEAU SX       | ASAMBLEA UNION NIVELADOR SX    | SUPORT PRINDERE LIMITATOR SX   |
| 16   | F01020252 | VITE M16X2X50 U5737 8.8 ZN     | BOLT M16X 2X 50 U5737 8.8 ZN   | SCHRAUBE M16X2X50 U5737 8.8 ZN  | VIS M16X 2X 50 U5737 8.8 ZN    | TORNILLO M16X2X50 U5737 8.8 ZN | SURUB M16X 2X 50 U5737 8.8 ZN  |
| 17   | R17614120 | ATTACCO SUPPORTO LIMITATORE DX | COUPL. LEVEL PLATE SUPPORT RH  | HALTERUNG ANSCHLUSS EBEN RH.    | SUPPORT COUPLE NIVEAU DX       | ASAMBLEA UNION NIVELADOR DX    | SUPORT PRINDERE LIMITATOR DX   |
| 18   | F02200463 | SPINA SCATTO D. 5 B/81 ZN      | SNAP PIN D5 B/81 ZN            | EINRASTSTIFT D5 B/81 ZN         | FICHE A DETENTE D5 B/81 ZN     | CLAVIJA DE MUELLE D5 B/81 ZN   | STIFT RESORT D5 B/81 ZN        |
| 19   | F03150935 | INNESTO RAP.MASCH.1/2 A VALV.  | QUICK CONNECT MALE CONE 1/2    | SCHNELLKUPP.GEWINDE KONISC 1/2  | CONNEXION RAPIDE MALE CONE 1/2 | ACOPLAMIEN.RAP.MACHO CONO 1/2  | CUPLA RAPIDA TATA 1/2 VALVA    |
| 20   | F03151237 | ROS. 21 X27X1,5 RAME -1/2"     | COPPER WASHER 21X27X1,5 1/2    | SCHLEIBE KUPFER 21X27X1,5 1/2   | RONDELLE CUIVRE 21X27X1,5 1/2  | ARANDELA COBRE 21X27X1,5 1/2   | SAIBA PLANA 21X27X1,5 1/2      |
| 21   | F03150211 | NIPLO MM CIL-CIL 1/2-1/4 ZN    | NIPLE MM CIL-CIL 1/4-1/2 ZN    | NIPLE GG 1/4-1/2 ZN             | NIPLE MM 1/4-1/2 ZN            | NIPLE MM 1/4-1/2 ZN            | NIPLU MM CIL-CIL 1/4-1/2 ZN    |
| 22   | F05150325 | CAPPUC.F X INN.M RAP.1/2 ROSSO | COVER CONNECT F 1/2 RED        | DECKEL W 1/2 SCHNELLKUPP. ROT   | COUVERCLE CONNEXION F 1/2 ROSE | PAC PROTECCION F 1/2 ROJO      | CAPAC PROTECTIE F 1/2 ROSU     |
| 23   | R17817920 | TUB 1/4 FF L=2000              | TR 2SN 1/4" FD1/4 FD1/4 2000   | TR 2SN 1/4" FD1/4 FD1/4 2000    | TR 2SN 1/4" FD1/4 FD1/4 2000   | TR 2SN 1/4" FD1/4 FD1/4 2000   | TR 2SN 1/4" FD1/4 FD1/4 2000   |
| 24   | F03151219 | RACCORDO -T- MASCHIO 1/4 ZN    | MALE T-UNION 1/4 ZN            | T VERBINDUNG                    | CONNECTION A T                 | JUNTURA A T                    | RACORD -T- TATA 1/4 ZN         |
| 25   | G23440517 | TUBO 1/4R2 C-F 1/4 L2000 HL/ID | PIPE 1/4R2 C-F 1/4 L2000 HL/ID | ROHR 1/4R2 C-F 1/4 L2000 HL/ID  | TUBE 1/4R2 C-F 1/4 L2000 HL/ID | TUBO 1/4R2 C-F 1/4 L2000 HL/ID | TUB 1/4R2 C-F 1/4 L2000 HL/ID  |
| 26   | F03150310 | NIPLO MM CIL-CIL 3/8-1/4 ZN    | NIPPLE CYL.MALE3/8-1/4 ZN      | NIPPELZYL.3/8-1/4 ZN            | NIPPLE MALE CYL.3/8-1/4 ZN     | NIPLE MACHO CIL.3/8-1/4 ZN     | NIPLU TATA CIL.3/8-1/4 ZN      |
| 27   | F03151240 | ROS. 17 X23X1,5 RAME -3/8"     | COPPER WASHER 17X23X1,5 3/8"   | SCHEIBE KUPFER 17X23X1,5 3/8"   | RONDELLE CUIVRE 17X23X1,5 3/8" | ARADNELA COBRE 17X23X1,5 3/8"  | SAIBA PLANA 17X23X1,5 3/8"     |
| 28   | R17640260 | CILINDRO A=40 S=20 C=300 L=500 | CYLINDER A=40 S=20 C=300 L=500 | ZYLINDER A=40 S=20 C=300 L=500  | CYLINDRE A=40 S=20 C=300 L=500 | CILINDRO A=40 S=20 C=300 L=500 | CILINDRU A=40 S=20 C=300 L=500 |
| 29   | R17640290 | DRIVE PIASTRA LIMITATORE IDRA  | HYDRAULIC DRIVE PLATE LIMITER  | ANTRIEBSSCHLEIBE LIMITER HYDRAT | DRIVE PLAQUE DE LIMITEUR HYDRA | UNIDAD PLACA LIMITER HIDR.     | PLACA ANTRENARE LIMIT. HIDR    |
| 30   | R17640330 | SUPPORTO ATTACCO CILINDRO      | CYLINDER MOUNTING SUPPORT      | SUPPORT ANHANGE ZYLINDER        | PIECES JOINTES CYLINDRE        | ARCHIVOS ADJUNTOS CILINDRO     | SUPORT ATASARE CILINDRU        |
| 31   | R17640220 | SUPPORTO ATTACCO CILINDRO      | CYLINDER MOUNTING SUPPORT      | SUPPORT ANHANGE ZYLINDER        | PIECES JOINTES CYLINDRE        | ARCHIVOS ADJUNTOS CILINDRO     | SUPORT ATASARE CILINDRU        |
| 32   | R17640250 | SUPPORTO ATTACCO CILINDRO      | CYLINDER MOUNTING SUPPORT      | SUPPORT ANHANGE ZYLINDER        | PIECES JOINTES CYLINDRE        | ARCHIVOS ADJUNTOS CILINDRO     | SUPORT ATASARE CILINDRU        |
| 33   | F01020260 | VITE M16X2X70 U5737 8.8 ZN     | BOLT M16X2X70 U5737 8.8 ZN     | SCHRAUBE M16X2X70 U5737 8.8 ZN  | VIS M16X2X70 U5737 8.8 ZN      | TORNILLO M16X2X70 U5737 8.8 ZN | SURUB M16X2X70 U5737 8.8 ZN    |
| 34   | F01020369 | VIT.M24X 3X 90 U5737 10.9 ZB   | BOLT M24X 3X 90 U5737 10.9ZB   | SCHR. M24X 3X 90 U5737 10.9ZB   | VIS M24X 3X 90 U5737 10.9ZB    | TORN.M24X 3X 90 U5737 10.9ZB   | SURUB M24X 3X 90 U5737 10.9ZB  |
| 35   | F01020285 | VITE M16X2X100 U5737 8.8 ZN    | BOLT M16X2X100 U5737 8.8 ZN    | SCHR.M16X2X100 U5737 8.8 ZN     | VIS M16X2X100 U5737 8.8 ZN     | TORN.M16X2X100 U5737 8.8 ZN    | SURUB M16X2X100 U5737 8.8 ZN   |
| 36   | R17811172 | SCONTRO TUBO 100               | BRACKET TUBE Q.100             | ANSCHLAG TUB 100                | BUTEE TUBO 100                 | ELEMENTO DE EMPALME TUBO 100   | BRIDA FIXARE TUB 100           |
| 37   | F01230144 | DADO M24X 3 D982 8 ZN          | NUT M24X 3 D982 8 ZN           | MUTTER M24X 3 D982 8 ZN         | ECROU M24X 3 D982 8 ZN         | TUERCA M24X 3 D982 8 ZN        | PIULITA M24X 3 D982 8 ZN       |
| 38   | R17615130 | SPINA D20 L=25 C40 ZN          | BOLT D20 L=25 C40 ZN           | BOLZEN D20 L=25 C40 ZN          | BOULON D20 L=25 C40 ZN         | PERNO D20 L=25 C40 ZN          | BOLT D20 L=25 C40 ZN           |
| 39   | F01030152 | VITE M16X 2X70 U5933 10.9 ZD   | BOLT M16X2X70 U5933 8.8 ZN     | SCHRAUBE M16X2X70 U5933 8.8 ZN  | VIS M16X2X70 U5933 8.8 ZN      | TORNILLO M16X2X70 U5933 8.8 ZN | SURUB M16X 2X 70 U5933 8.8 ZN  |
| 40   | F03100383 | GUAINA TELATA                  | SHEATH                         | KABEL                           | GAINE                          | VAINA                          | INVELITOARE                    |
| 41   | F01020266 | VITE M16X2X120 U5737 8.8 ZN    | BOLT M16X 2X120 U5737 8.8 ZN   | SCHR.M16X 2X120 U5737 8.8 ZN    | VIS M16X 2X120 U5737 8.8 ZN    | TORN.M16X 2X120 U5737 8.8 ZN   | SURUB M16X 2X120 U5737 8.8 ZN  |
| 42   | R17640640 | BOCCOLA D40 D30 D16,5 L9       | BUSH D40 D30 D16,5 L90 ZN      | BUCHSE D40 D30 D16,5 L90 ZN     | BUSHING D40 D30 D16,5 L90 ZN   | CASQUILLO D40 D30 D16,5 L90 ZN | BUCSA D40 D30 D16,5 L90 ZN     |



**RUOTA DI PROFONDITÀ / DEPTH WHEEL / TIEFENRAD / ROUE DE PROFONDEUR / RUEDA DE PROFUNDIDAD / ROATĂ DE ADÂNCIME**

**TAV. 080**

| Pos. | Cod.      | Descrizione                  | Description                  | Benennung                     | Description                 | Descripcion                  | Descriere                     |
|------|-----------|------------------------------|------------------------------|-------------------------------|-----------------------------|------------------------------|-------------------------------|
| 1    | R18012160 | ASS.RUOTA                    | ASSEMBLY WHEEL               | TIEFENRAD                     | ASSEMBLEE ROUE              | ASAMBLEA RUEDA               | ANSAMBLU ROATA                |
| 2    | R17815722 | ASS.SUPPORTO CARPENTERIA     | ASSEMBLY SUPPORT             | HALTERUNG ZUSAMMENBAU         | ASSEMBLE SUPPORT            | ASAMBLEA SUPPORTO            | ANSAMBLU SUPORT               |
| 3    | R17810440 | ASS.PERNO D20 L105 ZN        | BOLT D20 L105 ZN             | BOLZEN D20 L105 ZN            | BOULON D20 L105 ZN          | PERNO D20 L105 ZN            | BOLT D20 L105 ZN              |
| 4    | F02200507 | SPINA A SCATTO D 9 B/83      | SNAP PIN D9 B/83 ZN          | EINRASTSTIFT D9 B/83 ZN       | FICHE A DETENTE D9 B/83 ZN  | CLAVIJA DE MUELLE D9 B/83 ZN | STIFT RESORT D9 B/83 ZN       |
| 5    | R17821590 | CAVALLOTTO                   | BRACKET PIPE 100             | ANSCHLAG ROHR 100             | BRIDE TUBE 100              | EL.DE EMPALME TUBO 100       | BRIDA TUB 100                 |
| 6    | F01020369 | VIT.M24X 3X 90 U5737 10.9 ZB | BOLT M24X 3X 90 U5737 10.9ZB | SCHR. M24X 3X 90 U5737 10.9ZB | VIS M24X 3X 90 U5737 10.9ZB | TORN.M24X 3X 90 U5737 10.9ZB | SURUB M24X 3X 90 U5737 10.9ZB |
| 7    | G18701590 | RONDELLA 25X35X2,5 ZN        | WASHER 25 X35 X2,5 ZN        | SCHEIBE 25 X35 X2,5 ZN        | RONDELLE 25 X35 X2,5 ZN     | ARANDELA 25 X35 X2,5 ZN      | SAIBA 25X 35X 2,5 ZN          |
| 8    | F01230144 | DADO M24X 3 D982 8 ZN        | NUT M24X 3 D982 8 ZN         | MUTTER M24X 3 D982 8 ZN       | ECROU M24X 3 D982 8 ZN      | TUERCA M24X 3 D982 8 ZN      | PIULITA M24X 3 D982 8 ZN      |



**KIT LUCI / LIGHTING KIT / LICHTER KIT / KIT D'ECLAIRAGE / KIT DE ILUMINACION / LIT LUMINI**

**TAV. 090**

| Pos. | Cod.      | Descrizione               | Description                  | Benennung                   | Description                 | Descripcion                 | Descriere                      |
|------|-----------|---------------------------|------------------------------|-----------------------------|-----------------------------|-----------------------------|--------------------------------|
| 1    | M12400956 | KIT LUCI                  | LAMP KIT LIGHTS              | LAMPEN KIT LICHT            | FEU KIT ECLAIRAGE           | FAROL SET LUCES             | FARURI SET LUMINI              |
| 2    | F01230085 | DADO M16X 2 D982 8 ZN     | NUT M16X 2 D982 8 ZN         | MUTTER M16X 2 D982 8 ZN     | ECROU M16X 2 D982 8 ZN      | TUERCA M16X 2 D982 8 ZN     | PIULITA M16X 2 D982 8 ZN       |
| 3    | F20110800 | CAV.R.B=100 M=16X2 L=135  | U BOLT M16X 2X 40 118X135 ZN | VERBI.M16X 2X 40 118X135 ZB | ATTEL.M16X 2X 40 118X135 ZB | PERNO M16X 2X 40 118X135 ZB | BRIDA "U" M16X 2X40 118X135 ZN |
| 4    | R17640090 | PIASTRA SUPPORTO LIT LUCI | BLADE SUPPORT KIT LIGHTS     | MESSER HALTERUNG KIT LUCE   | LAMA SUPPORT KIT LUCE       | CUCHILLA SOPORTE KIT LUCE   | PLACA SUPORT KIT LUMINI        |

**USATE SEMPRE RICAMBI ORIGINALI  
ALWAYS USE ORIGINAL SPARE PARTS  
IMMER DIE ORIGINAL-ERSATZTEILE VERWENDEN  
EMPLOYEZ TOUJOURS LES PIECES DE RECHANGE ORIGINALES  
UTILIZAR SIEMPRE REPUESTOS ORIGINALES  
UTILIZAȚI ÎNTOTDEAUNA PIESE DE SCHIMB ORIGINALE**

**MASCHIO GASPARDO**



**R19530770**

**\*F07011059\***

**MASCHIO GASPARDO**

**MASCHIO GASPARDO SpA**

**Sede legale e stabilimento produttivo**

Via Marcello, 73 - 35011 Campodarsego (Padova) - Italy  
Tel. +39 049 9289810  
Fax +39 049 9289900  
Email: [info@maschio.com](mailto:info@maschio.com)  
[www.maschionet.com](http://www.maschionet.com)

**MASCHIO DEUTSCHLAND GMBH**

Äußere Nürnberger Straße 5  
D - 91177 Thalmassing ng  
Deutschland  
Tel. +49 (0) 9173 79000  
Fax +49 (0) 9173 790079

**MASCHIO FRANCE Sarl**

1, Rue Denis Papin ZA  
F - 45240 La Ferte St. Aubin  
France  
Tel. +33 (0) 2.38.64.12.12  
Fax +33 (0) 2.38.64.66.79

**MASCHIO IBERICA S.L.**

Calle Cabernet, 10  
Poligono Industrial Clot de Moja  
Olerdola - 08734 Barcelona  
Tel. +34 93.81.99.058  
Fax +34 93.81.99.059

**MASCHIO-GASPARDO USA Inc**

120 North Scott Park Road  
Eldridge, IA 52748 - USA  
Ph. +1 563 2859937  
Fax +1 563 2859938  
e-mail: [info@maschio.us](mailto:info@maschio.us)

**MASCHIO GASPARDO SpA**

**Stabilimento produttivo**

Via Mussons, 7 - 33075  
Morsano al Tagliamento (PN) - Italy  
Tel. +39 0434 695410  
Fax +39 0434 695425  
Email: [info@gaspardo.it](mailto:info@gaspardo.it)

**ООО МАСКИО-ГАСПАРДО РУССИЯ**

404126, Россия, Волгоградская область,  
г.Волжский, ул.Пушкина, 117 \*6\*.  
Тел.: +78443525065  
факс: +78443525064  
e-mail: [info@maschio.ru](mailto:info@maschio.ru)  
<http://www.maschionet.com>

**MASCHIO GASPARDO ROMANIA SRL**

Strada Înfrățirii, Nr. 155  
315100 Chișineu - Criș, Arad  
Tel. +40 257 30 70 30  
Fax +40 257 30 70 40  
e-mail: [info@maschio.com](mailto:info@maschio.com)  
<http://www.maschio.com>

**MASCHIO MIDDLE EAST**

P.O. Box 922388  
Amman, 11192 Jordan  
Tel. 962 605511384  
Fax 962 6 5538398  
e-mail: [tahaeng@nets.com.jo](mailto:tahaeng@nets.com.jo)

**GASPARDO-MASCHIO TURCHIA**

**MASCHIO-GASPARDO CANADA Inc**  
**MASCHIO-GASPARDO CINA**  
**MASCHIO-GASPARDO POLAND**  
**MASCHIO-GASPARDO UCRAINA**  
**GASPARDO BIELORUSSIA**  
**MASCHIO-GASPARDO KOREA**